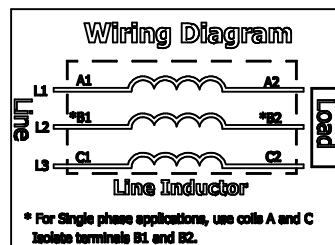
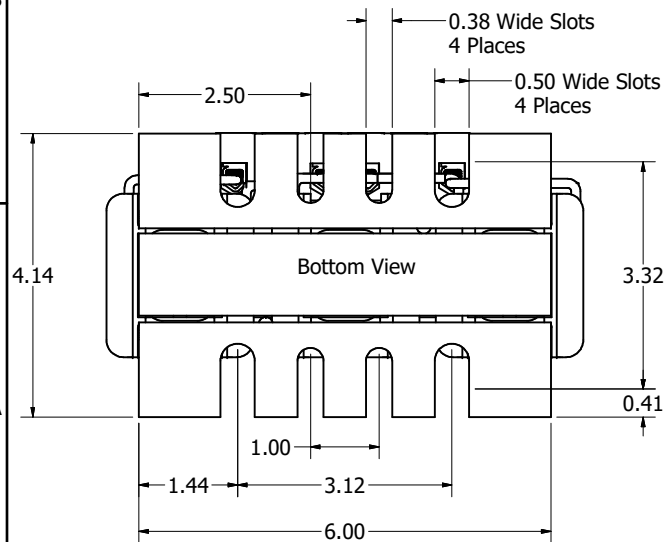
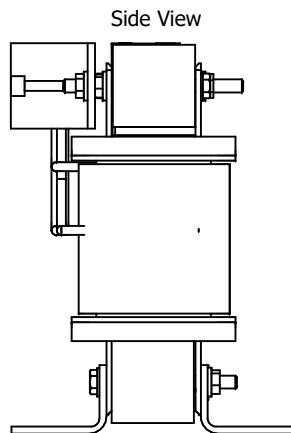
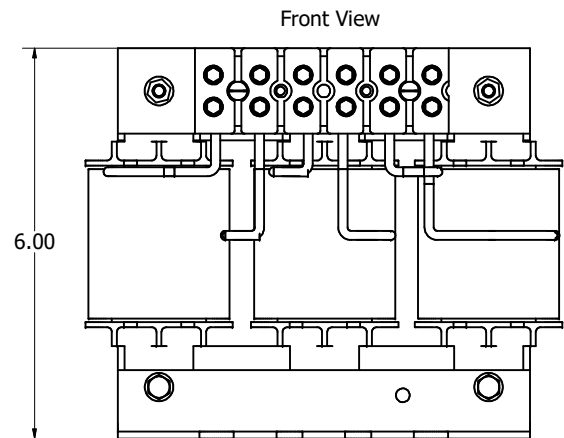
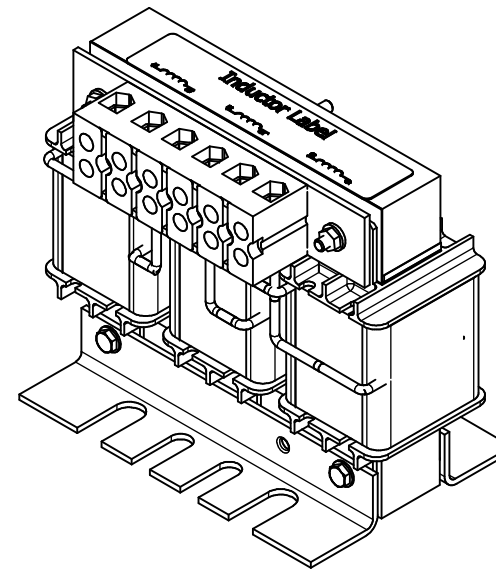


Wire Range: 4-18 AWG.  
Torque : 20 IN-LBS (2.3 Nm)

480 Rated Voltage, 600 Max Voltage				
Part Number	Horsepower (HP)	Amps (A)	Inductance (-mH) +/-10%	Weight (LBS)
KLR16CTB	10	16	2.30	12
KLR18CTB	12	18	2.04	12

(Customer Connections) Markings On Terminal Block For Reference Only.



Customer Is Responsible For Installation To Meet All National And Local Electrical Codes.  
Material(s) Shall be RoHS Compliant

DIMENSIONS IN INCHES (EXCEPT AS NOTED) TOLERANCES (EXCEPT AS NOTED) DECIMAL .XX ± .25 .XXX ± .10 FRACTIONAL ± 1/32 ANGULAR ± 1°		THE INFORMATION AND DESIGN CONTAINED IN THIS DRAWING ARE CONFIDENTIAL AND THE PROPRIETARY PROPERTY OF ALLIENT INC. AND ITS SUBSIDIARIES. NEITHER THIS DESIGN NOR ANY INFORMATION CONTAINED IN THIS DRAWING MAY BE REPRODUCED OR DISCLOSED TO OTHERS WITHOUT THE EXPRESS WRITTEN CONSENT OF ALLIENT INC. AND ITS SUBSIDIARIES.		DESIGNED BY: DSW	DATE: 12/17/25		W132N10611 Grant Drive Germantown, WI 53022 © 2025 Allient Inc.
P	7321	KLR-5 to KLR-5-1	12/17/25	DSW	SCALE: 1:1.2		DESIGN NO: KLR-5-IDG
NO	ECO	REVISION	DATE	BY	SCALE	DESIGN NO.	SHEET 1 OF 1

KLR-Three-Phase Inductor  
Frame C