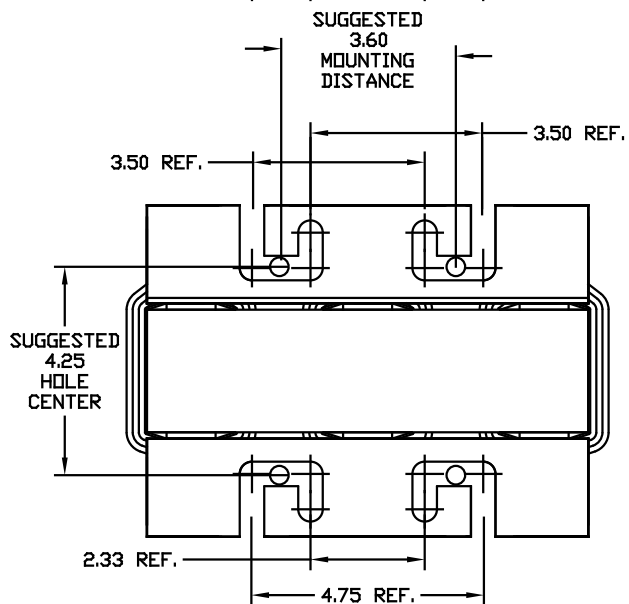
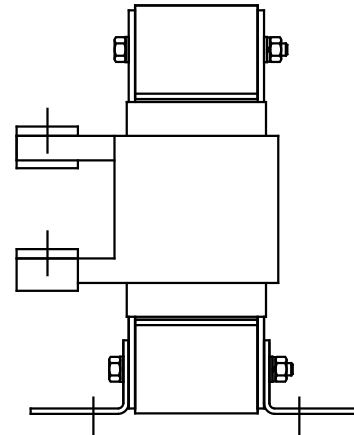
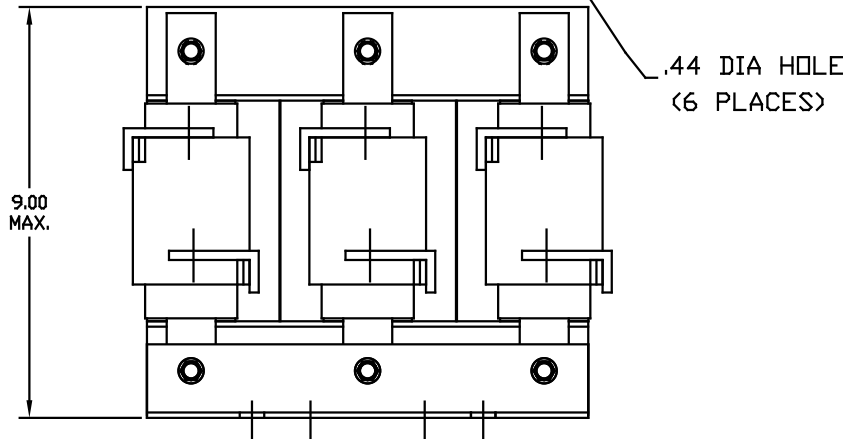
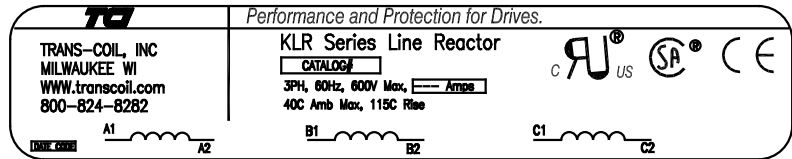


CATALOG NO	VOLTS(V.)	__mH±10%	__AMPS(A)	APPROX WT-LBS
KLR250BCB	7.20	.044	250	48
KLR250FCB	8.62	.053	250	48



				TOLERANCES EXCEPT AS NOTED:		7878 N. 86th STREET MILWAUKEE, WI 53224	
				DECIMAL		SINE-GUARD REACTOR	
				XX ± .03		KLR CB'S (FRAME G)	
				.XXX ± .010			
				FRACTIONAL ± 1/16		DRG BY BW DATE 03/09/98 DWG. NO. KLR-28DG	
2235 MOUNTING CHG				06/03/03	DSW	SCALE 1/2"=1" APPROVA C	
NO REVISION				DATE	BY	SHT. 1 OF 1	