

.38 DIA HOLE
6 PLACES.

CATALOG NO	VOLTS(V.)	__mH±10%	__AMPS(A)	APPROX WT-LBS
KLR200BCB	7.20	.055	200	42
KLR200FCB	8.62	.066	200	42

TCI

TRANS-COIL, INC
MILWAUKEE WI
WWW.transcoil.com
800-824-8282

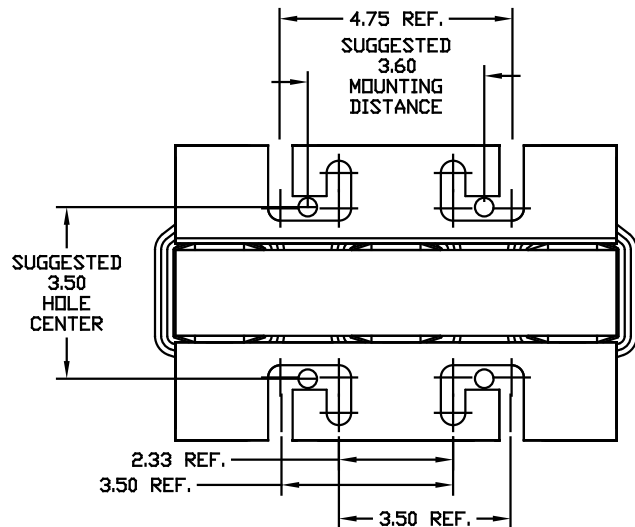
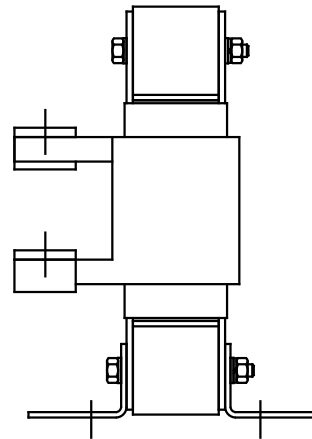
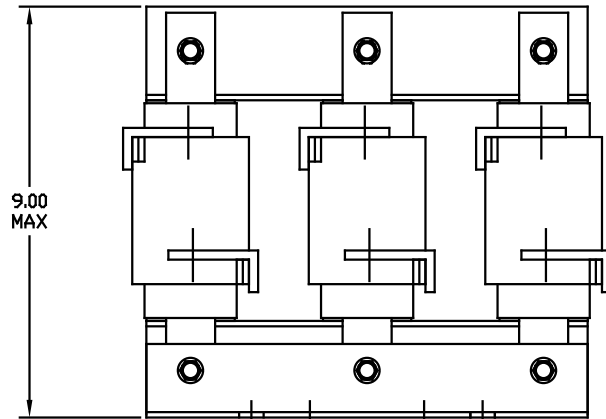
Performance and Protection for Drives.

KLR Series Line Reactor

CATALOG# _____

3PH, 60Hz, 600V Max, _____ Amps

40C Amb Max, 115C Rise



				TOLERANCES EXCEPT AS NOTED		7878 N. 86th STREET MILWAUKEE, WI 53224	
				DECIMAL	FRACTIONAL		
				.XX ± .03	± 1/32	SINE-GUARD REACTOR KLR CB'S (FRAME I)	
				.XXX ± .01	ANGULAR		
				± 1/2°	DRG. NO. KLR-27DG SCALE 1/2"=1"		
2235, MOUNTING CHG.	06/03/03	DSW		DRG. BY BW	DATE 03/09/98	DRG. NO. KLR-27DG	SHT. 1 OF 1
NO	REVISION	DATE	BY	APPROV			