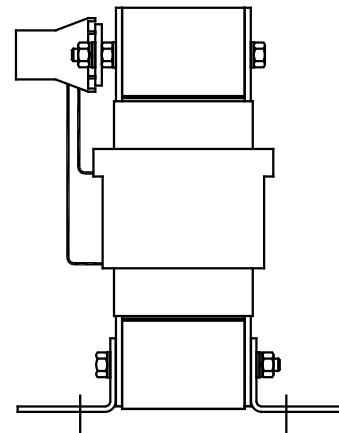
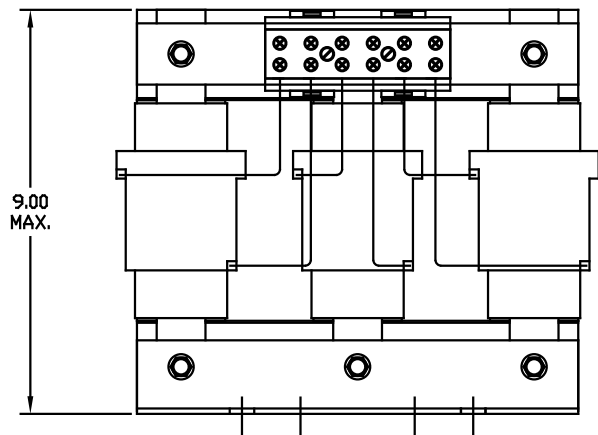
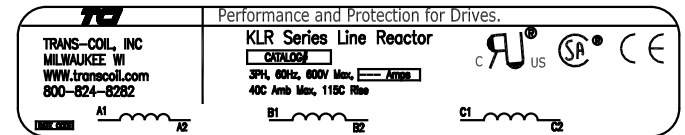
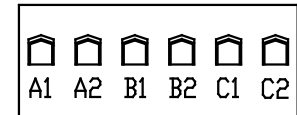


CATALOG NO	VOLTS(V,)	__MH±10%	__AMPS(A)	APPROX WT-LBS
KLR55ETB	28.75	.801	55	49
KLR80CTB	24.00	.459	80	49
KLR80DTB	17.25	.330	80	49
KLR80ETB	28.75	.550	80	49

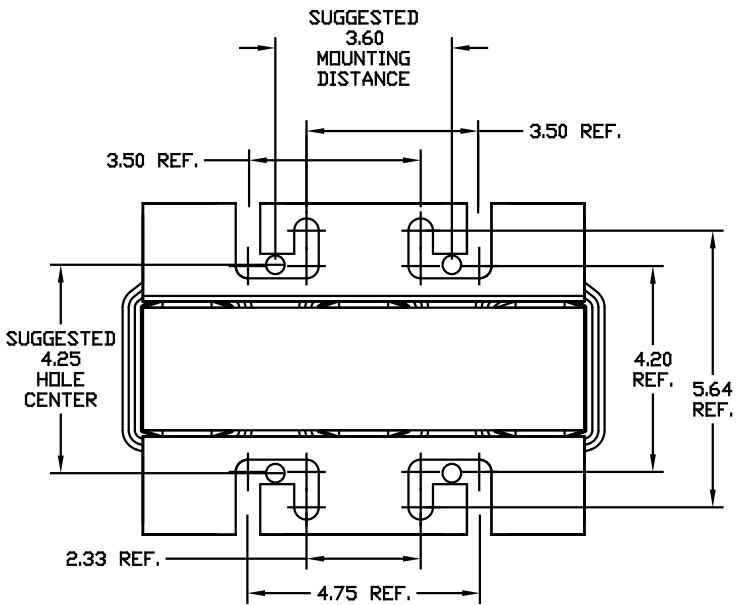


TERMINAL BLOCK
 TORQUE(LB-IN)=CUSTOMER WIRE

35 = 1 AWG THRU 4 AWG
 30 = 6 AWG THRU 14 AWG
 25 = 16 AWG THRU 22 AWG



NOTE: A1, A2, B1, B2, C1, C2, MARKINGS ON TERMINAL BLOCK. FOR REFERENCE ONLY.



				TOLERANCES EXCEPT AS NOTED:		TCI 7878 N. 86th STREET MILWAUKEE, WI 53224	
				DECIMAL		SINE-GUARD REACTOR	
				.XX ± .03		KLR TB'S (FRAME G)	
				.XXX ± .010		Dwg. No. KLR-22DG	
				FRACTIONAL ± 1/16		Scale 1/2"=1"	
				ANGULAR ± 1/2°		SHT. 1 OF 1	
NO	REVISION	DATE	BY	APPROV	DATE	APPROV	
C	2235, MOUNTING CHG	06/02/03	DSW	BW	03/23/98		