

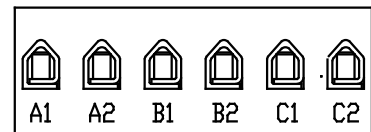
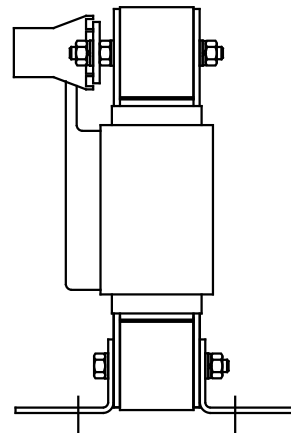
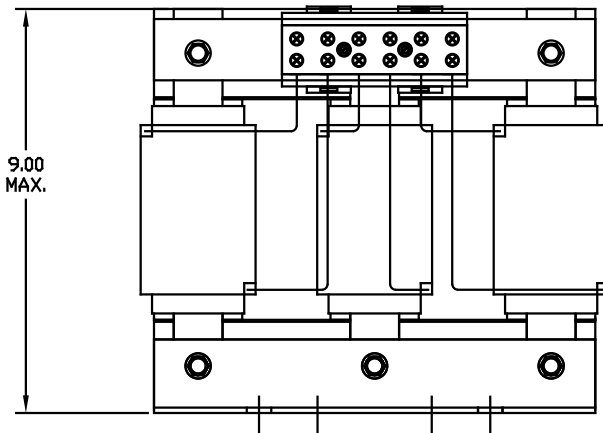
CATALOG NO	VOLTS(V.)	__mH±10%	__AMPS(A)	APPROX WT-LBS
KLR45ETB	28.75	.978	45	33
KLR55CTB	24.0	.668	55	33
KLR80ATB	14.4	.276	80	33

TCI Performance and Protection for Drives.

TRANS-COIL, INC
MILWAUKEE, WI
WWW.transcoil.com
800-824-8282

KLR Series Line Reactor
CATALOG #
3PH, 60Hz, 600V Max. **Amperes**
40C Amb Max, 115C Rise

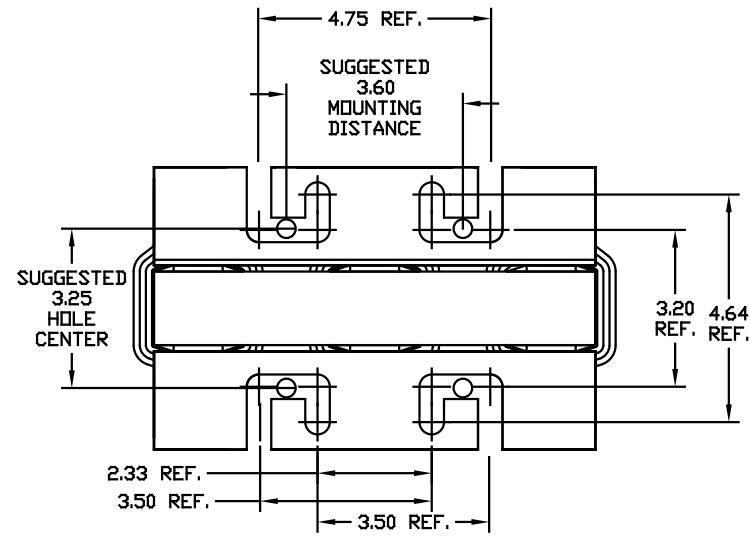
UL US SA CE



NOTE: A1, A2, B1, B2, C1, C2, MARKINGS ON TERMINAL BLOCK. FOR REFERENCE ONLY.

TERMINAL BLOCK
TORQUE(LB-IN)=CUSTOMER WIRE

35 = 1 AWG THRU 4 AWG
30 = 6 AWG THRU 14 AWG
25 = 16 AWG THRU 22 AWG



TOLERANCES EXCEPT AS NOTED				DRAWN BY	DATE	DWG. NO.	REV.
DECIMAL	FRACTIONAL	ANGULAR	APPROX				
.XX ±.03	.XXX±.010	± 1/16	± 1/2"	BW	03/06/98	KLR-21DG	SHT. 1 OF 1
2235, MOUNTING CHG.	06/02/03	DSW					
NO	REVISION	DATE	BY				

TCI 7878 N. 86th STREET
MILWAUKEE, WI 53224

SINE-GUARD REACTOR
KLR TB'S (FRAME H)