

CATALOG NO	VOLTS(V.)	__mH-±10%	__AMPS(A)	APPROX WT-LBS
KLR110BCB	7.20	.100	110	26
KLR110FCB	8.62	.120	110	26

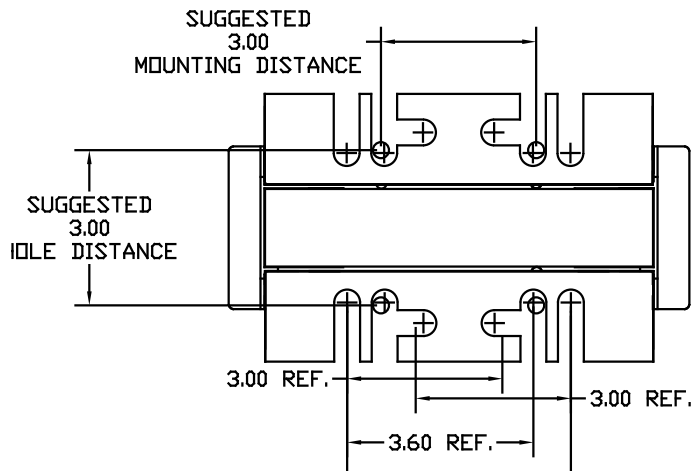
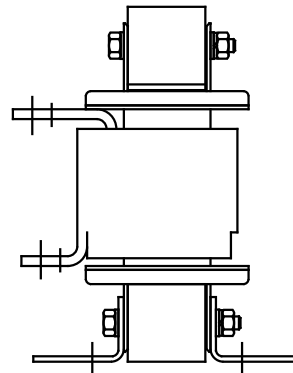
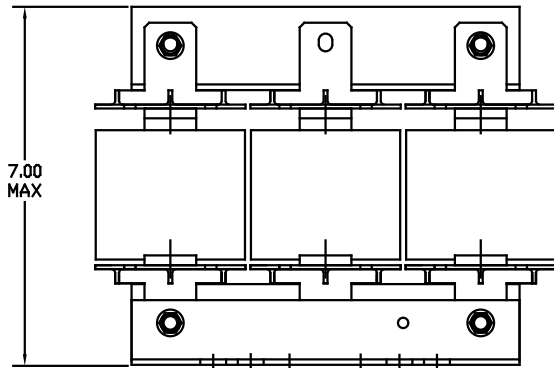
**TCI** Performance and Protection for Drives.

**TRANS-COIL, INC**  
MILWAUKEE WI  
WWW.transcoil.com  
800-824-8282

**KLR Series Line Reactor**  
CATALOG # \_\_\_\_\_  
3PH, 60Hz, 600V Max,    AMPs  
40C Amb Max, 115C Rise

**UL** **US** **SP** **CE**

A1 A2      B1 B2      C1 C2



			TOLERANCES EXCEPT AS NOTED: DECIMAL .XX ± .03 .XXX ± .01 FRACTIONAL ± 1/32 ANGULAR ± 1/2°	7878 N. 86th STREET MILWAUKEE, WI 53224  <b>SINE-GUARD REACTOR</b> <b>KLR CB'S (FRAME F)</b>	DRG BY EL	DATE 02/21/94	DRG. NO. C	KLR-10DG
2235, MOUNTING CHG	06/02/03	DSW	SCALE TO FIT		APPROV	SHT. 1 OF 1		
NO	REVISION	DATE	BY					