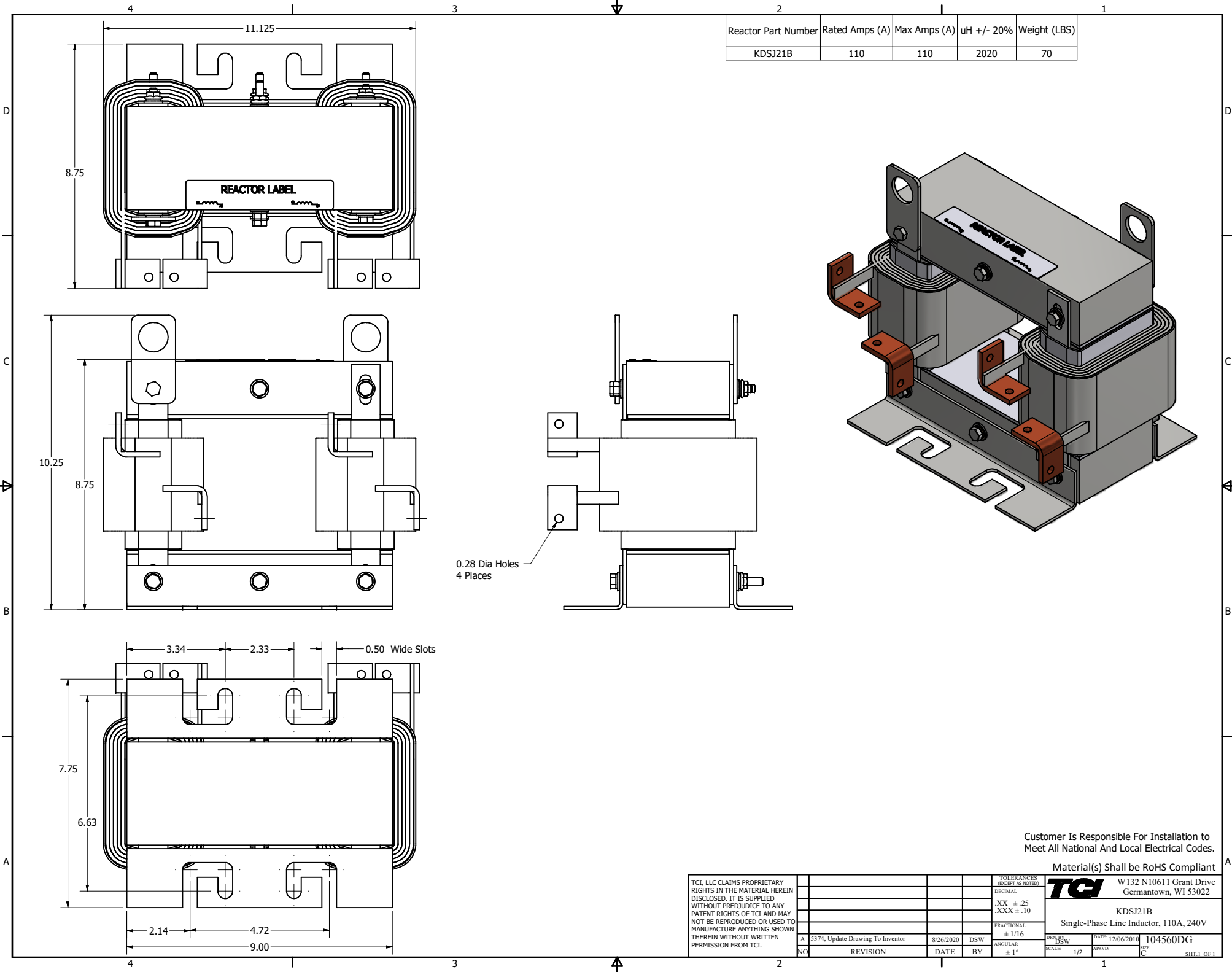



Reactor Part Number	Rated Amps (A)	Max Amps (A)	uH +/- 20%	Weight (LBS)
KDSJ21B	110	110	2020	70



Customer Is Responsible For Installation to Meet All National And Local Electrical Codes.

Material(s) Shall be RoHS Compliant

TCI, LLC CLAIMS PROPRIETARY RIGHTS IN THE MATERIAL HEREIN DISCLOSED. IT IS SUPPLIED WITHOUT PREJUDICE TO ANY PATENT RIGHTS OF TCI AND MAY NOT BE REPRODUCED OR USED TO MANUFACTURE ANYTHING SHOWN THEREIN WITHOUT WRITTEN PERMISSION FROM TCI.		TOLERANCES (EXCEPT AS NOTED)				 <div>W132 N10611 Grant Drive Germantown, WI 53022</div> <div>KDSJ21B</div> <div>Single-Phase Line Inductor, 110A, 240V</div>	
		DECIMAL					
		.XX ± .25 .XXX ± .10					
		FRACTIONAL					
		± 1/16					
		ANGULAR					
A	5374, Update Drawing To Inventor	8/26/2020	DSW		OWN BY SCALE 1/2	DATE 12/06/2016	104560DG
NO	REVISION	DATE	BY	± 1°	DRW	CN	SHT 1 OF 1