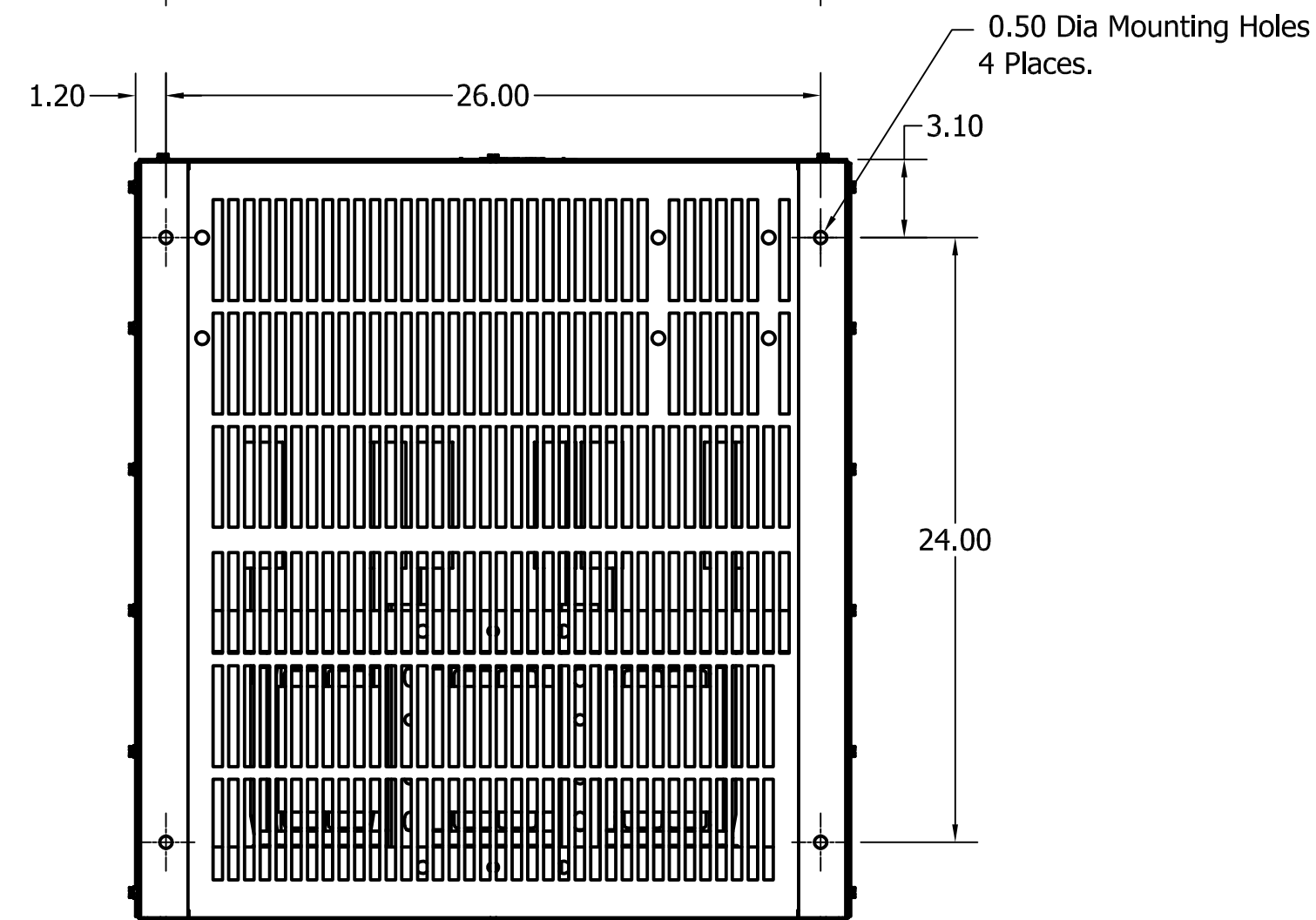
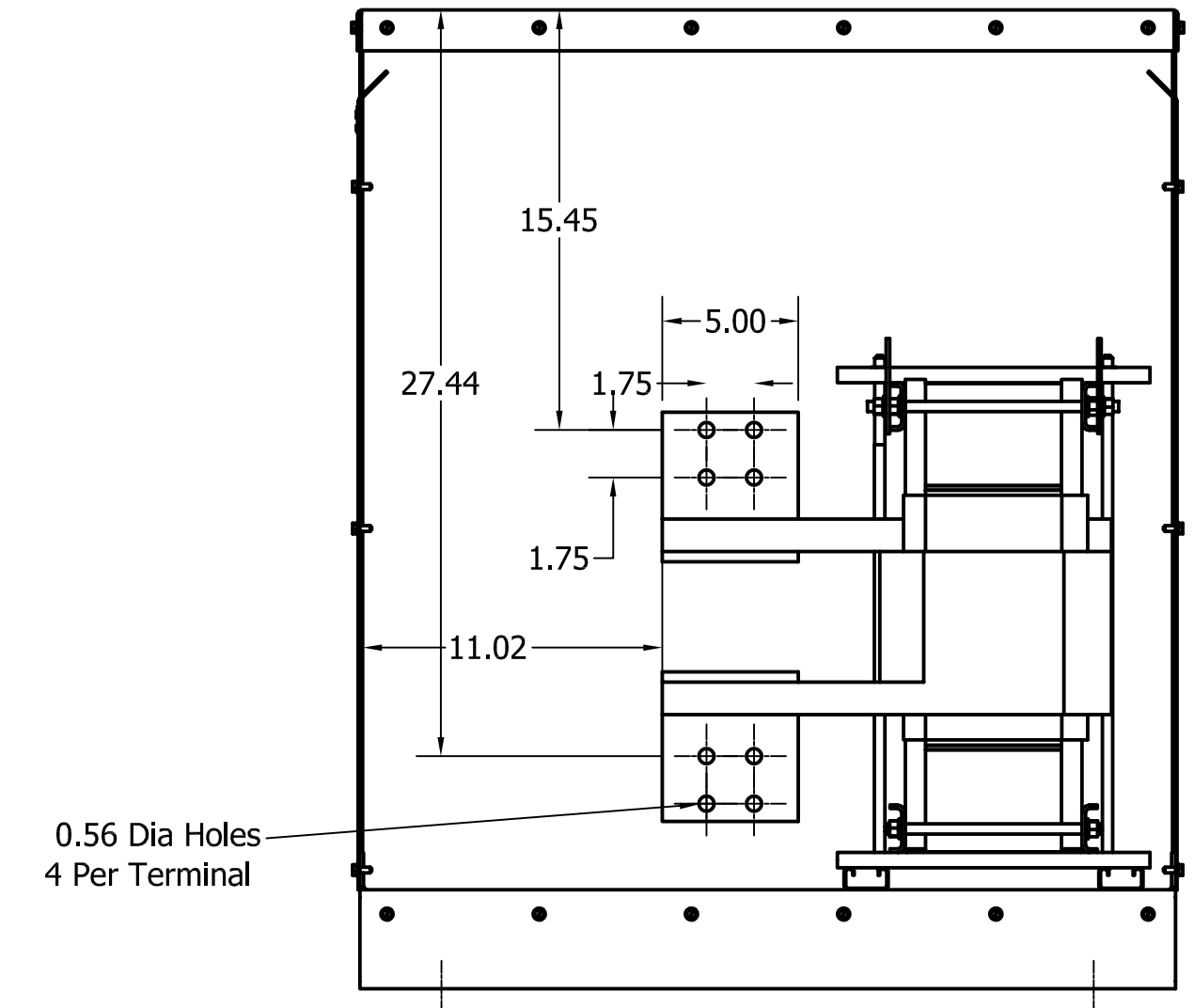
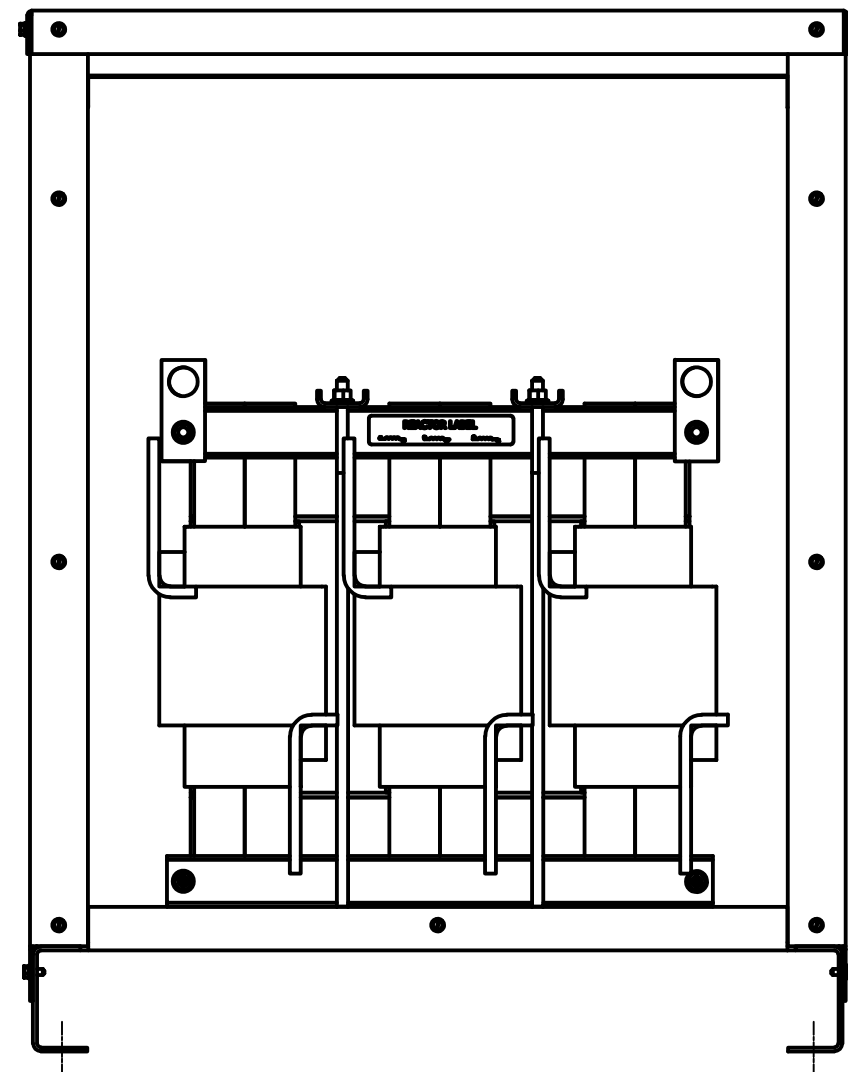
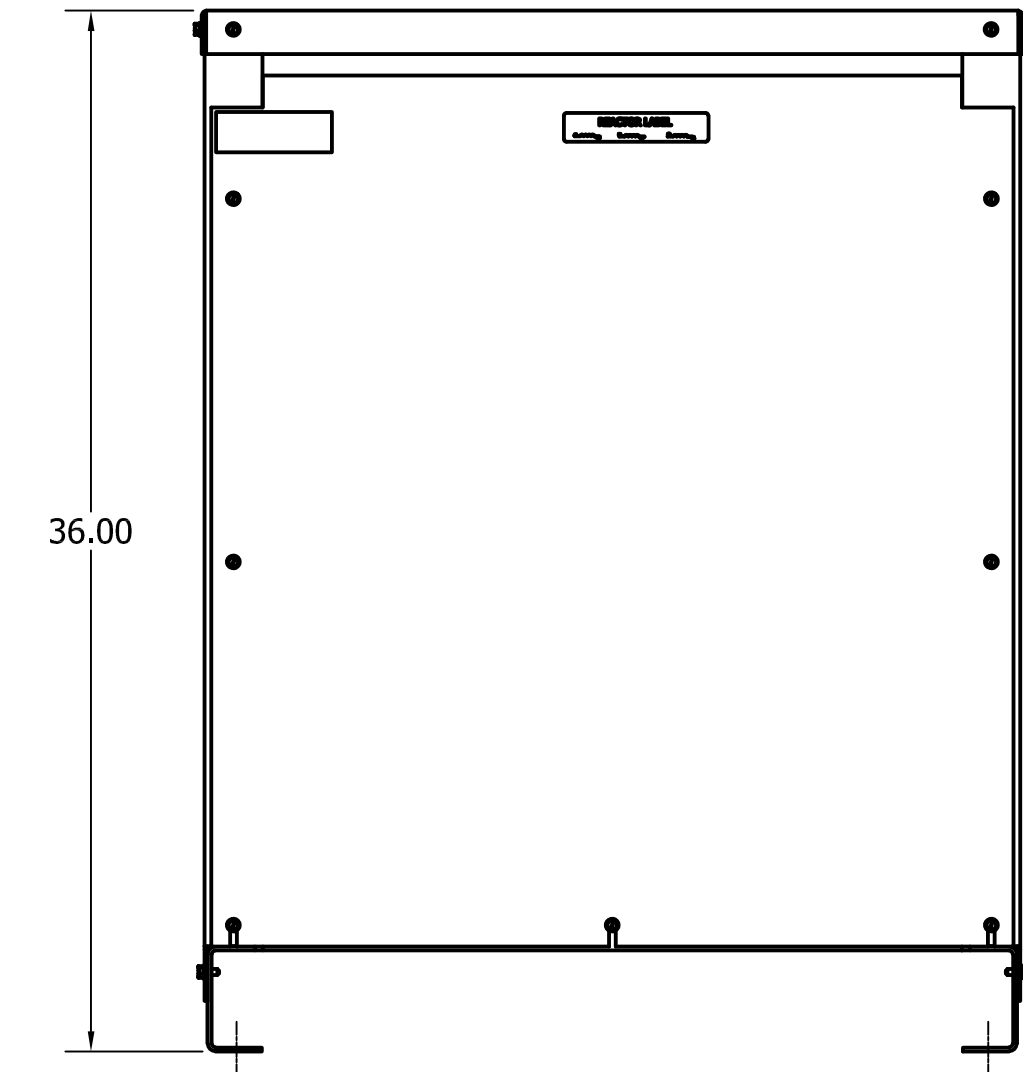
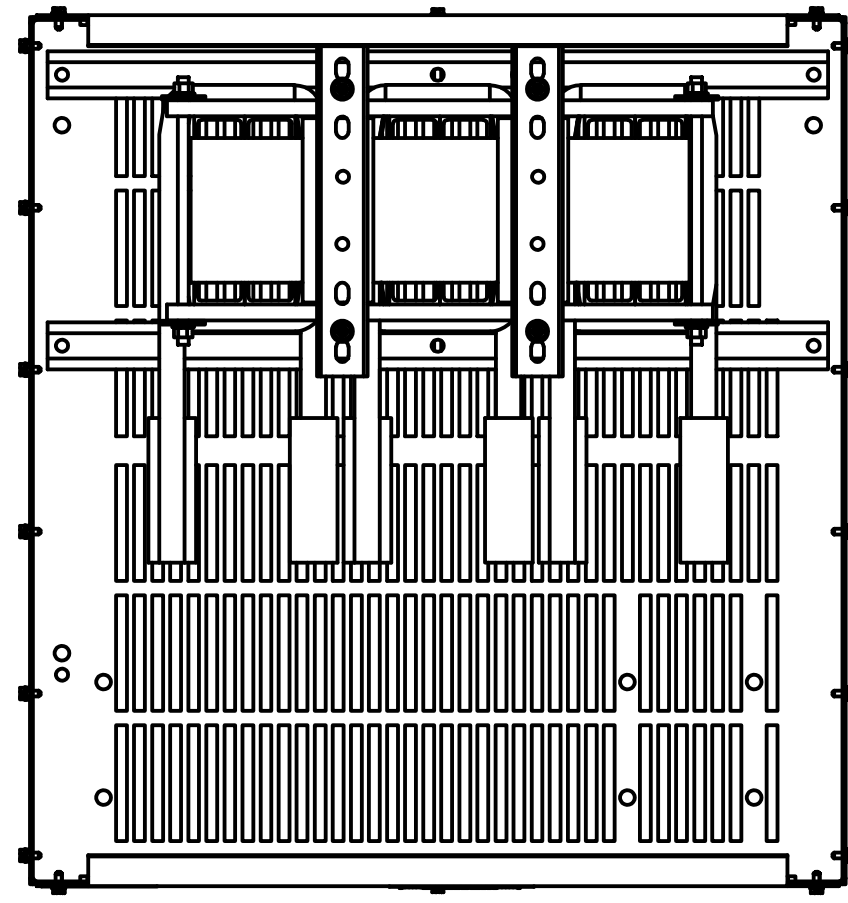
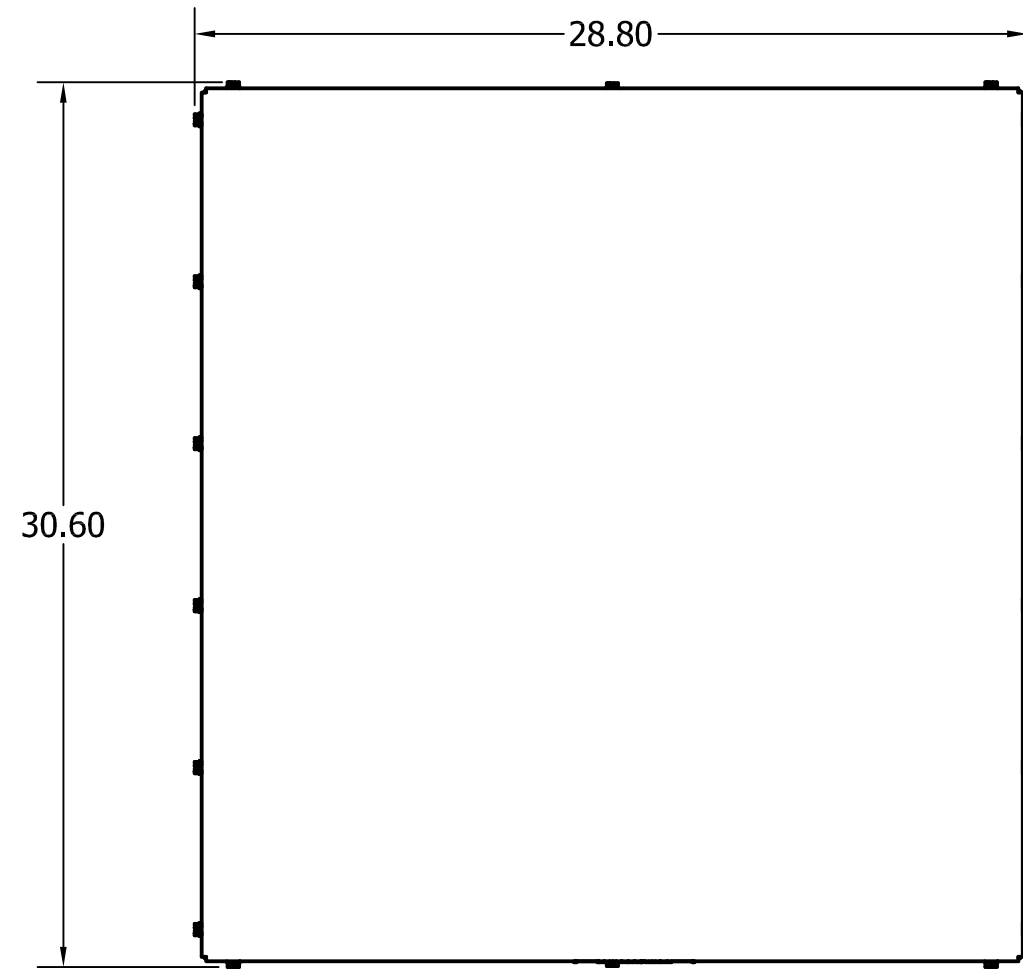



HP	TCI Part Number	Motor Amps	Amps Max.	Watts Loss	Approx Weight (LBS)
1250	KDRY41HC7V	1200	1200	2488	635



Material(s) Shall be RoHS Compliant

Customer Is Responsible For Installation to Meet All National And Local Electrical Codes.

TCI, LLC CLAIMS PROPRIETARY RIGHTS IN THE MATERIAL HEREIN DISCLOSED. IT IS SUPPLIED WITHOUT PREJUDICE TO ANY PATENT RIGHTS OF TCI AND MAY NOT BE REPRODUCED OR USED TO MANUFACTURE ANYTHING SHOWN THEREIN WITHOUT WRITTEN PERMISSION FROM TCI.				TOLERANCES (EXCEPT AS NOTED)		 W132 N10611 Grant Drive Germantown, WI 53022	
				DECIMAL		KDR, 690V, 1200A, 1250HP, 3 Phase, Type 1, Input Line Reactor, High Impedance, UL Recognized	
				FRACTIONAL		DRN. BY: DSW DATE: 3/29/07	
				ANGULAR		SCALE: 1/4	
				± 1°		SIZE: 103174DG	
A 4130, Drawing Updated				9/22/17		APRVD: 1	
NO REVISION				DATE		BY	
						SHT. 1 OF 1	