

4

3

2

1

D

D

C

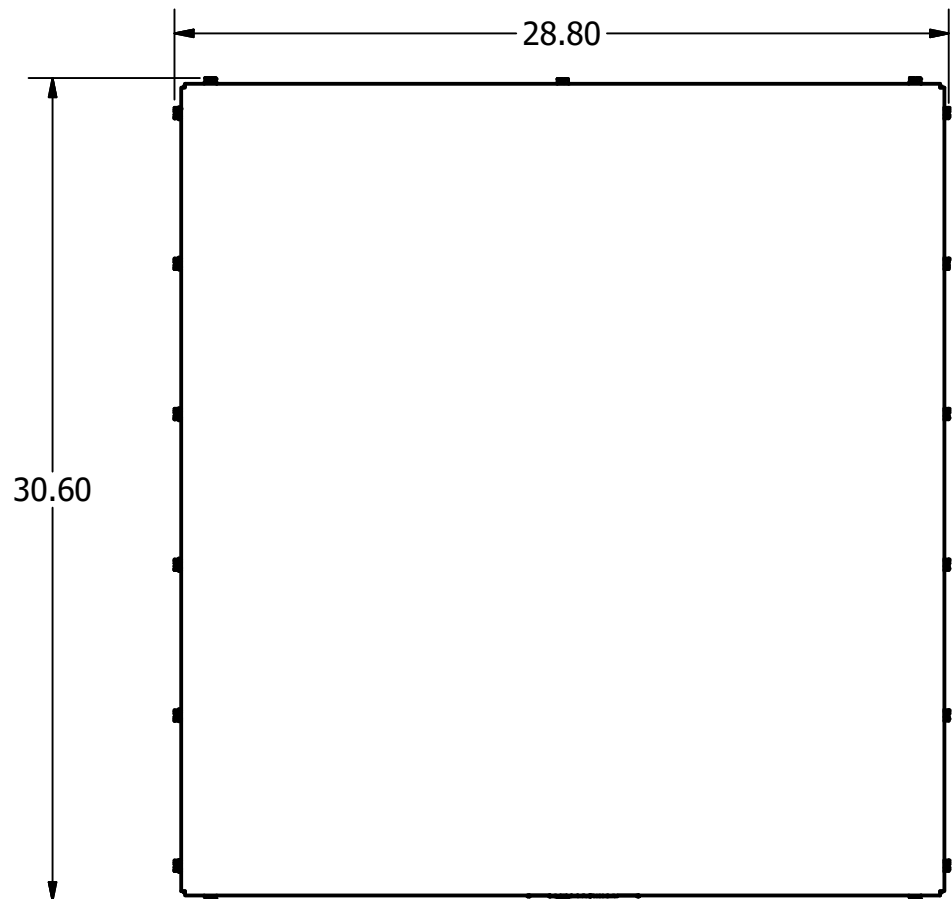
C

B

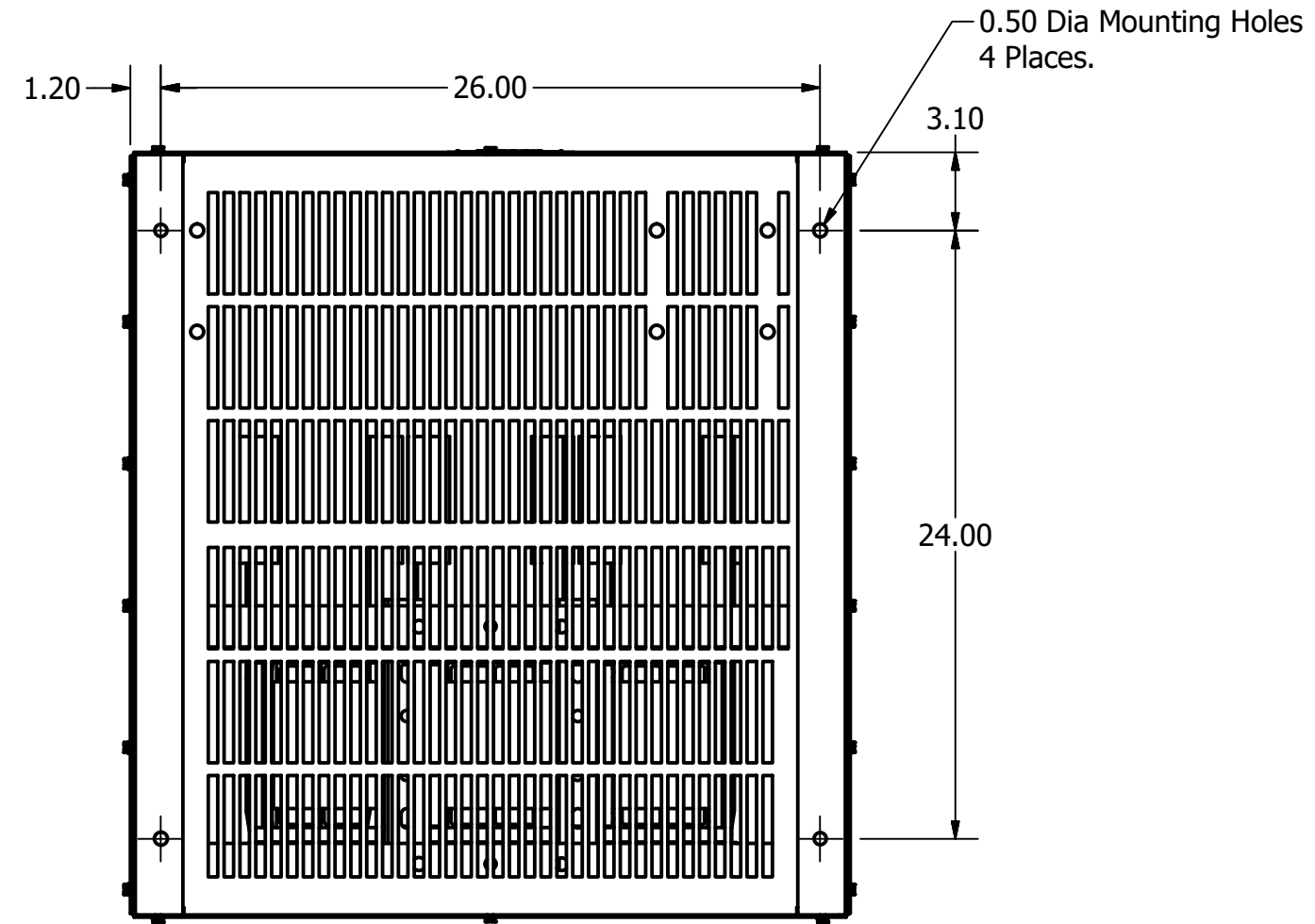
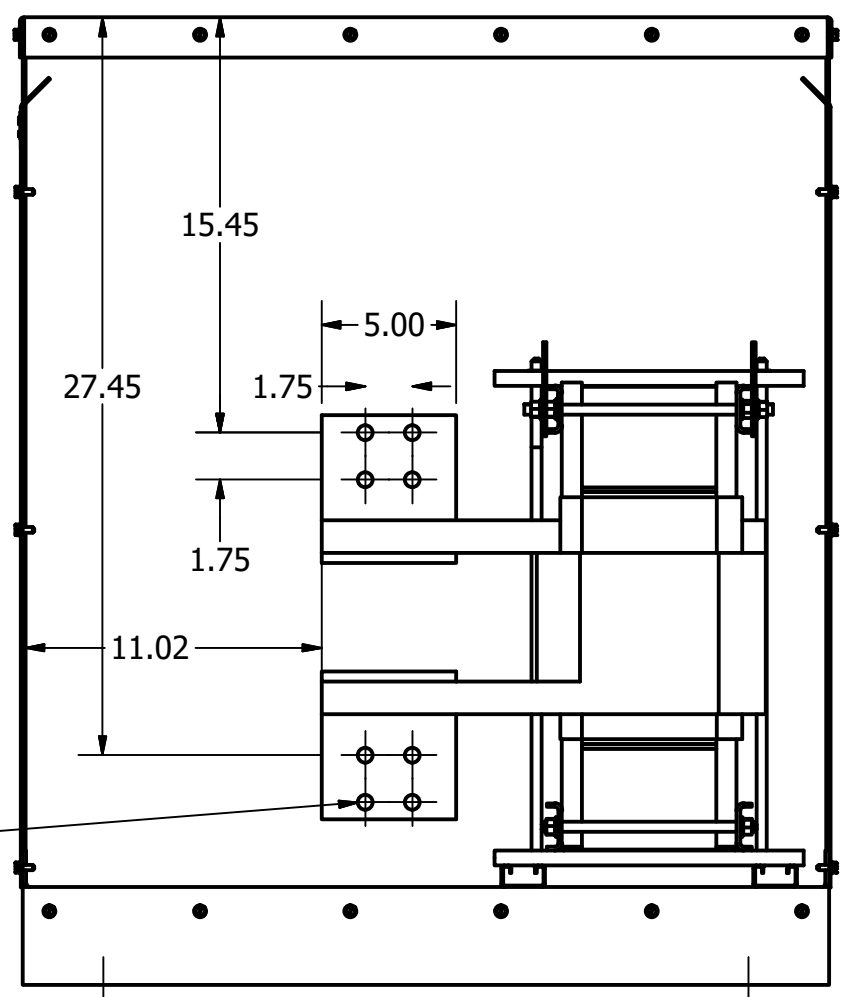
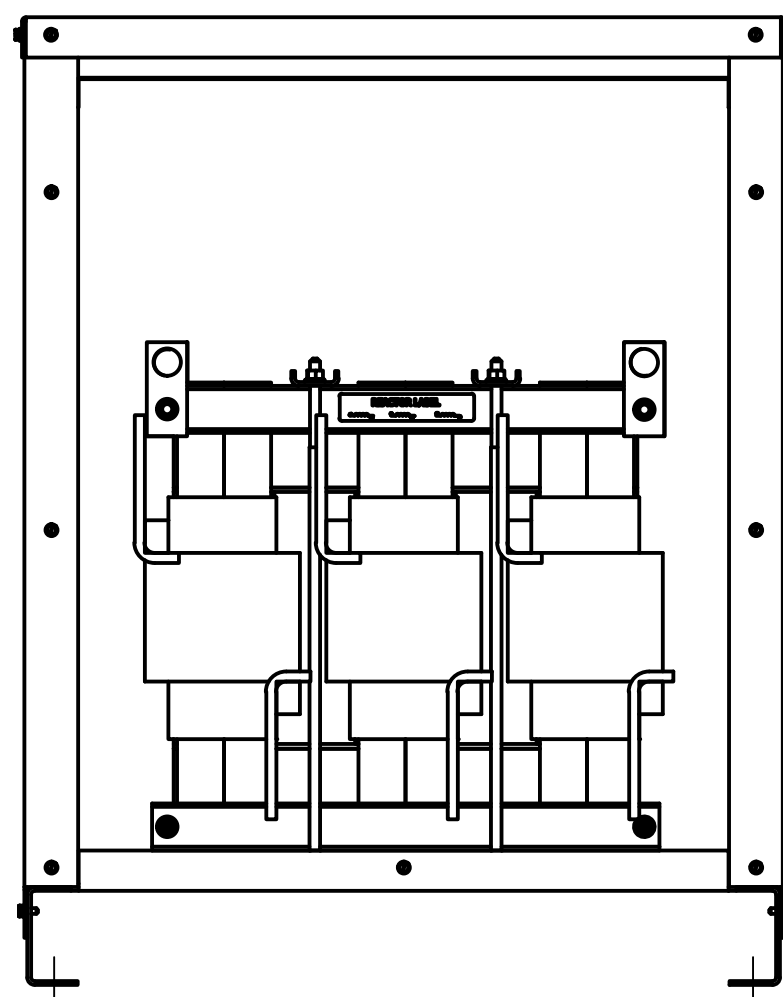
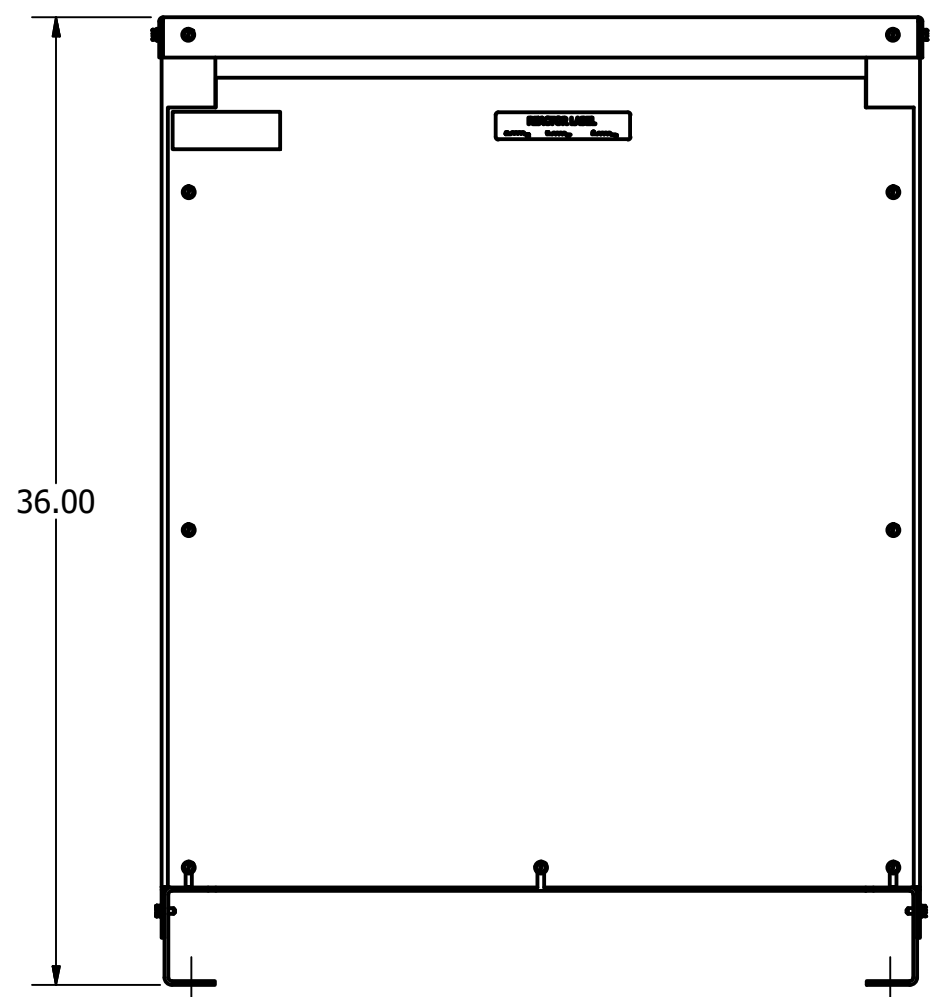
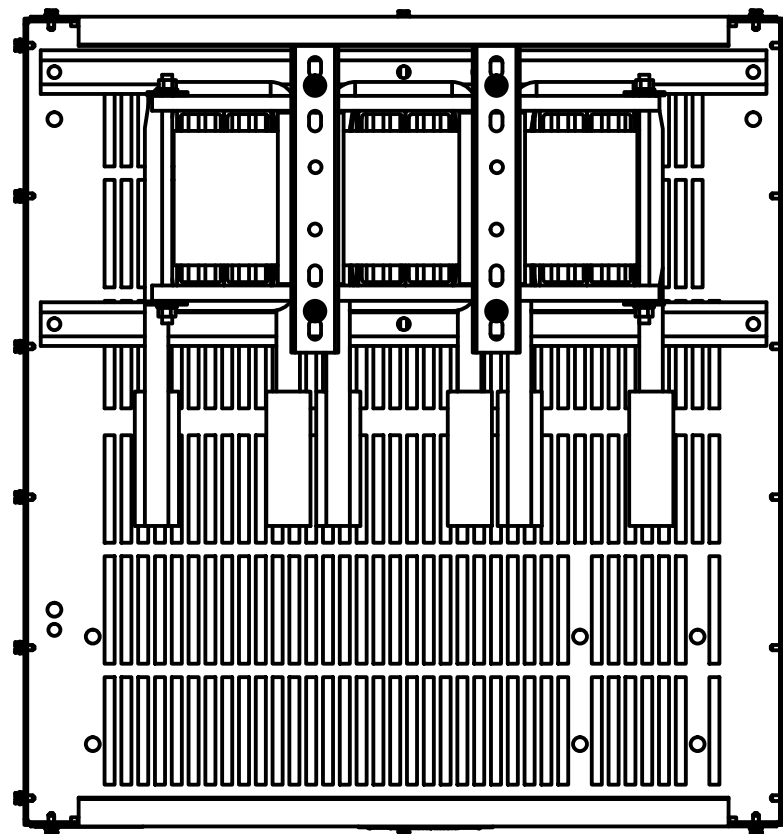
B

A

A



HP	TCI Part Number	Motor Amps	Amps Max.	Watts Loss	Approx Weight (LBS)
1250	KDRY41HC7	1200	1200	2488	635



0.56 Dia Holes  
4 Per Terminal

Material(s) Shall be RoHS Compliant

Customer Is Responsible For Installation to  
Meet All National And Local Electrical Codes.

TCI, LLC CLAIMS PROPRIETARY RIGHTS IN THE MATERIAL HEREIN DISCLOSED. IT IS SUPPLIED WITHOUT PREJUDICE TO ANY PATENT RIGHTS OF TCI AND MAY NOT BE REPRODUCED OR USED TO MANUFACTURE ANYTHING SHOWN THEREIN WITHOUT WRITTEN PERMISSION FROM TCI.					TOLERANCES (EXCEPT AS NOTED)	<b>TCI</b> W132 N10611 Grant Drive Germantown, WI 53022 KDR, 575V, 1200A, 1250HP, 3 Phase, Type 1, Input Line Reactor, High Impedance, UL Recognized
					DECIMAL	
						.XX ± .25 .XXX ± .10
						FRACTIONAL ± 1/16
	A	4130, Drawing Updated	9/22/17	DSW	ANGULAR ± 1°	DRN BY: DSW SCALE: 1/4 DATE: 3/27/03 APRVD: SIZE: C KDRY41HC7DG SHT. 1 OF 1