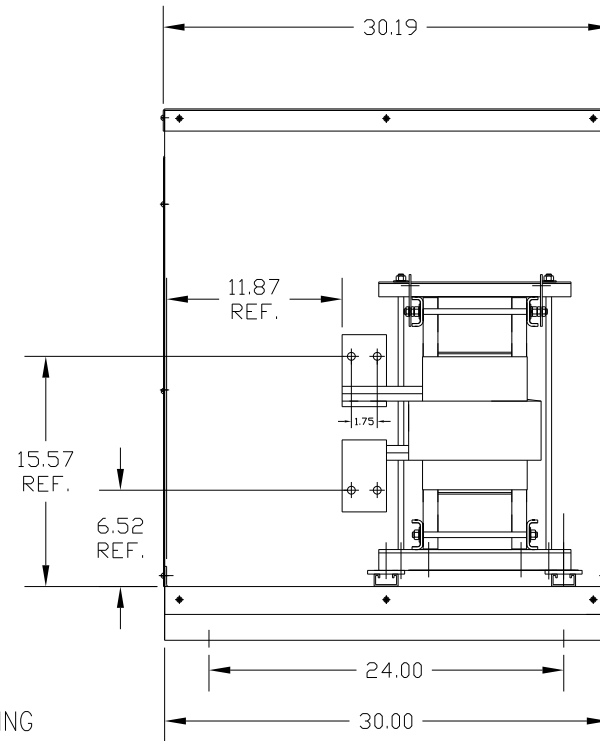
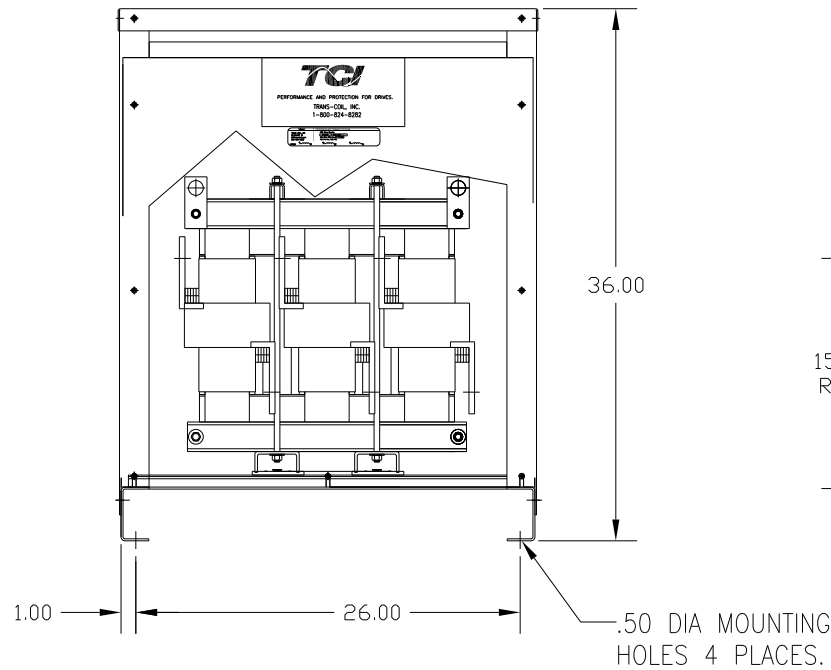
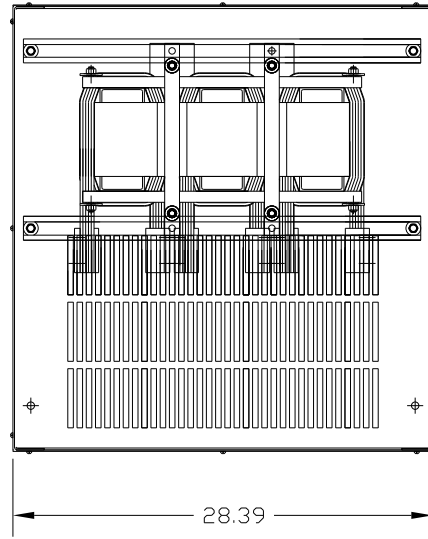



| CATALOG NO | VOLTAGE | NEC MOTOR HP | NEC MOTOR CURRENT | WATTS LOSS | APPROX. WEIGHT-LBS | TERMINAL HOLE SIZE |
|------------|---------|--------------|-------------------|------------|--------------------|--------------------|
| KDRY2HC7   | 480     | 1100         | 1320              | 2284       | 604                | .53                |

CUSTOMER IS RESPONSIBLE FOR INSTALLATION TO MEET ALL NATIONAL AND LOCAL ELECTRICAL CODES.



| TOLERANCES (EXCEPT AS NOTED) |          |      |    |  7878 N. 86th STREET<br>MILWAUKEE, WI 53224 |
|------------------------------|----------|------|----|--|
| DECIMAL                      |          |      |    |  |
| .XX ± .03                    |          |      |    |  |
| .XXX ± .01                   |          |      |    |  |
| FRACTIONAL                   |          |      |    |  |
| ± 1/32                       |          |      |    |  |
| ANGULAR                      |          |      |    |  |
| ± 1/2°                       |          |      |    |  |
| NO                           | REVISION | DATE | BY | DRN. BY DSW DATE 2/15/12 DWG. NO. B KDRY2HC7DG<br>SCALE APRVD. SHT. 1 OF 1   |