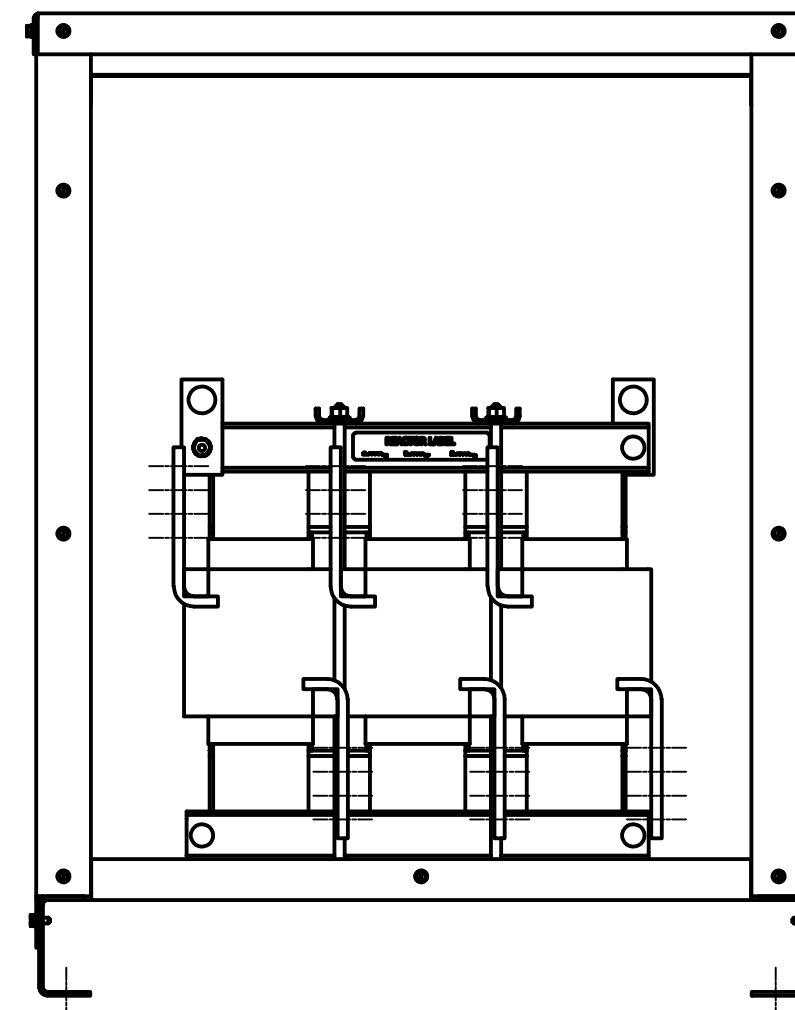
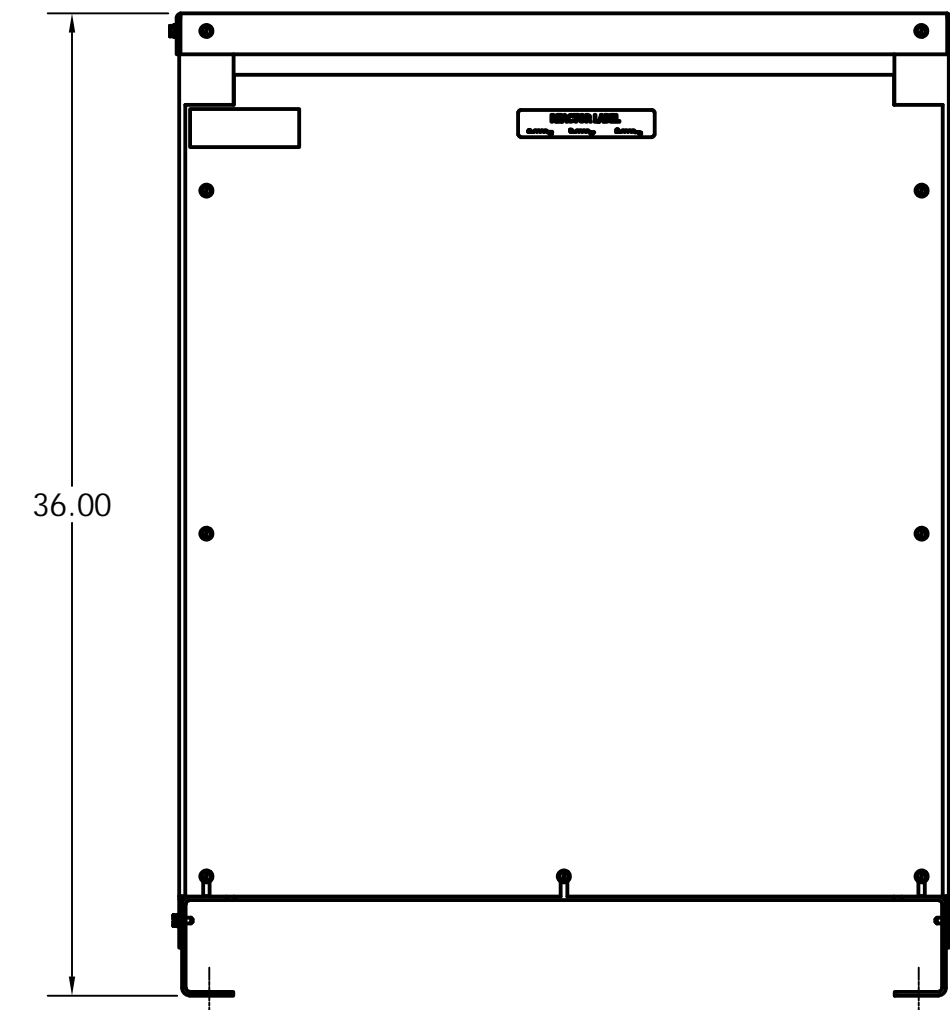
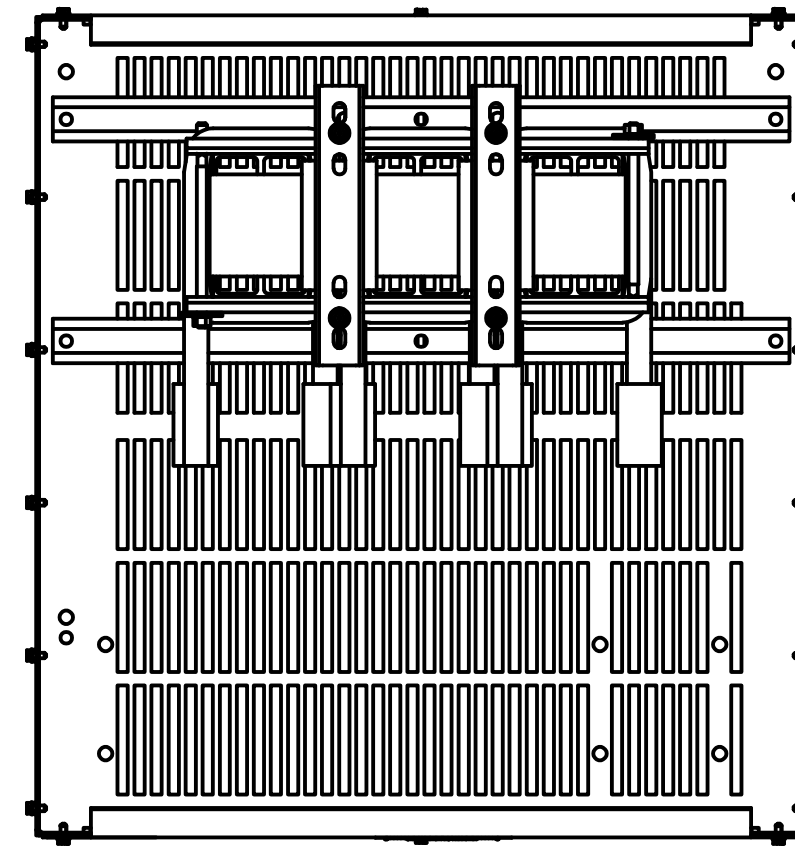
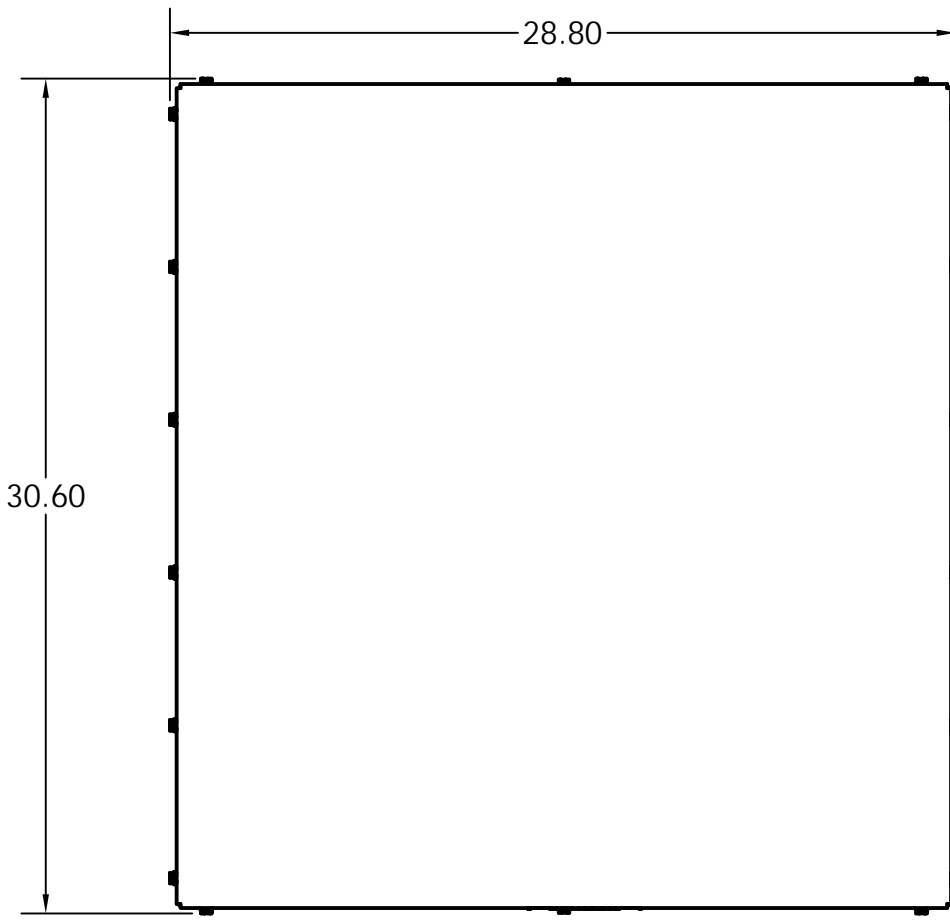
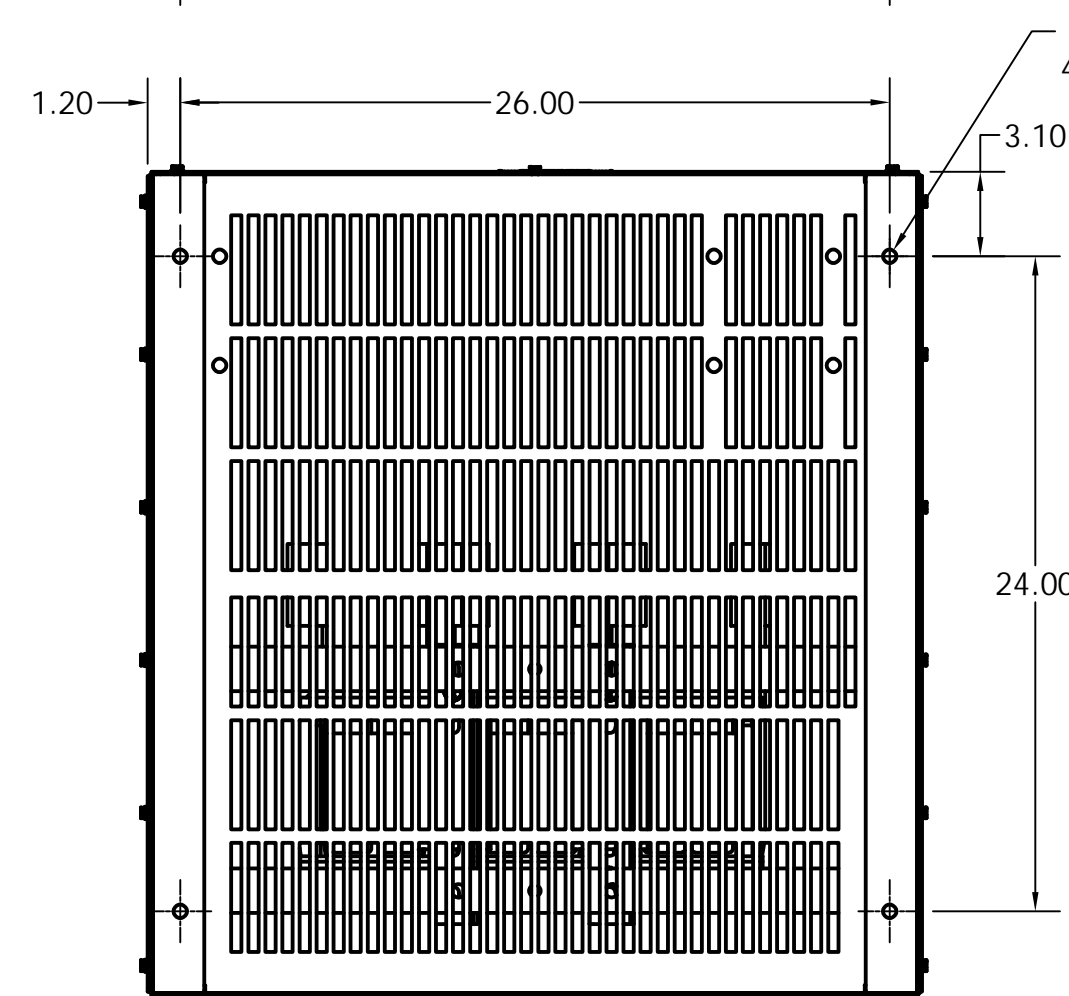
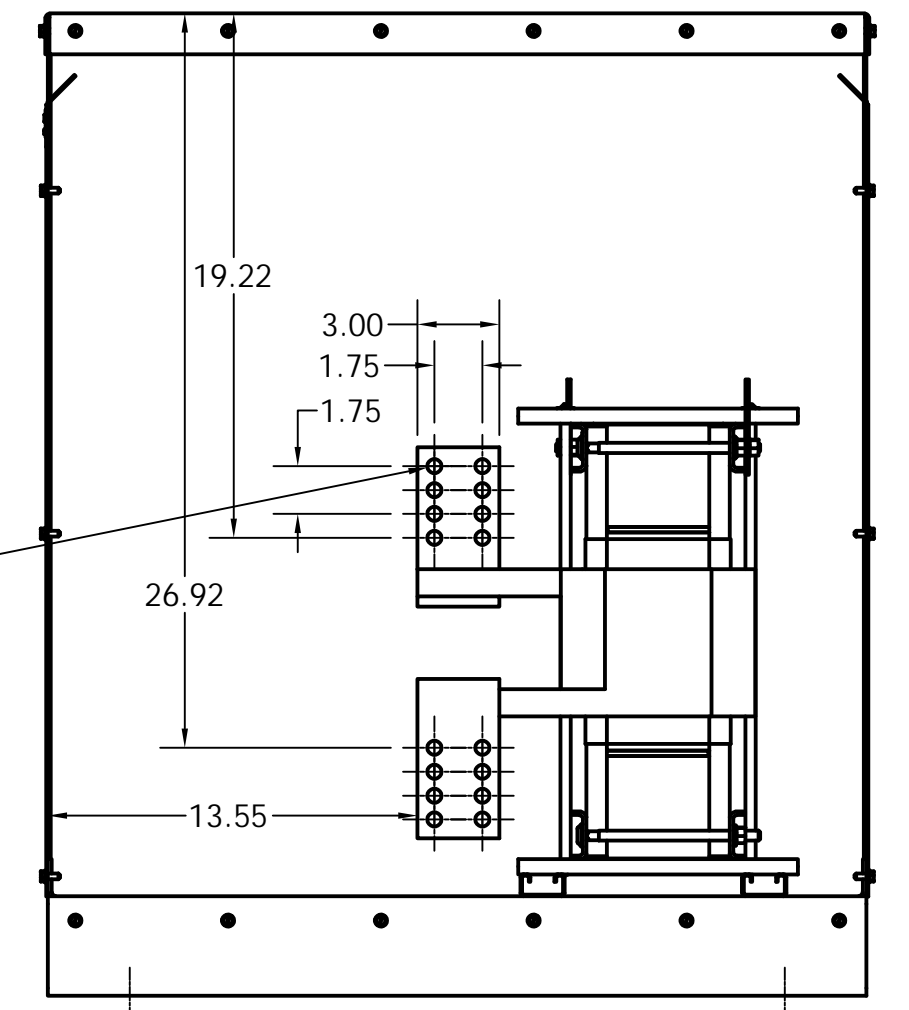


HP	TCI Part Number	NEC Motor Current	Amps Max.	Watts Loss	Approx Weight (LBS)
1000	KDRX4HC7	1200	1216	1337	450
900	KDRX3HC7	1080	1100	1869	450



0.52 Dia Holes  
8 Place Per Terminal.



Material(s) Shall be RoHS Compliant

Customer Is Responsible For Installation to Meet All National And Local Electrical Codes.

TCI, LLC CLAIMS PROPRIETARY RIGHTS IN THE MATERIAL HEREIN DISCLOSED. IT IS SUPPLIED WITHOUT PREJUDICE TO ANY PATENT RIGHTS OF TCI AND MAY NOT BE REPRODUCED OR USED TO MANUFACTURE ANYTHING SHOWN THEREIN WITHOUT WRITTEN PERMISSION FROM TCI.				TOLERANCES (EXCEPT AS NOTED)		<b>W132 N10611 Grant Drive Germantown, WI 53022</b>	
				DECIMAL			
				.XX ± .25		KDRX4HC7, 480V, 1216A, 1000HP, KDRX3HC7, 480V, 1100A, 900HP, 3 Phase, Type 1, Input Line Reactor, High Impedance, UL Recognized	
				.XXX ± .10			
				FRACTIONAL		DRN. BY: DSW	
				± 1/16		DATE: 11/30/06	
				ANGULAR		APRVD: KDR-206DG	
				± 1°		SCALE: 1/4	
				NO		SIZE: C	
				REVISION		SHT. 1 OF 1	
				DATE			
				BY			