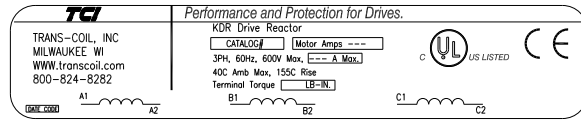
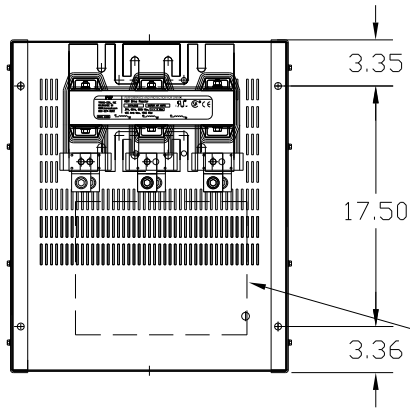
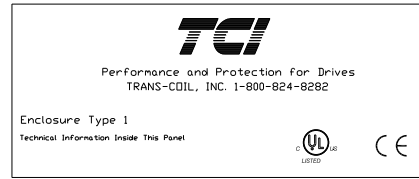


CATALOG NO	VOLTAGE	NEC MOTOR HP	NEC MOTOR CURRENT	WATTS LOSS	APPROX. WEIGHT-LBS	TORQUE (LB-IN)
KDRULL46HE01	575/600	250	242	472	176	500



LABEL PLACED ON INSIDE WALL OF CABINET.



LABEL PLACED ON FRONT OF CABINET.

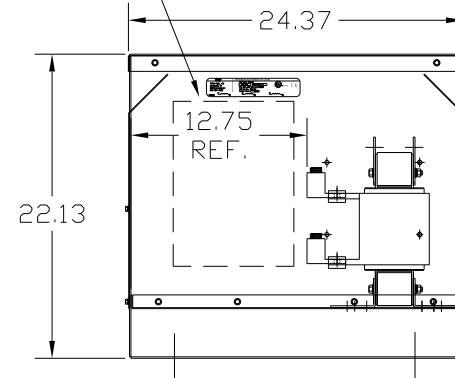
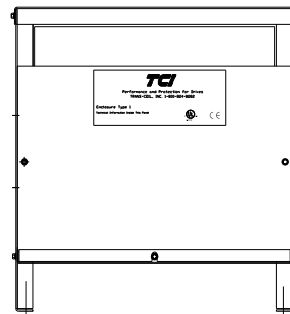
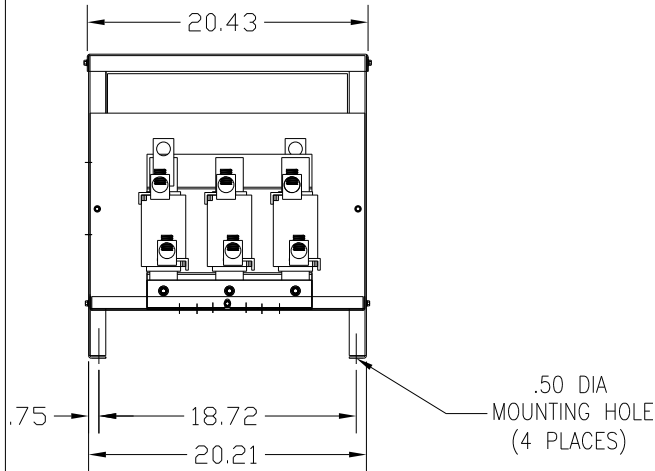
RECOMMENDED CONDUIT ENTRANCE AREA - LEFT FRONT SIDE, BOTTOM FRONT. RIGHT FRONT SIDE AND TOP.

NOTE 1: WATTS LOSS WILL VARY DUE TO FUNDAMENTAL FREQUENCY, CARRIER FREQUENCY AND OTHER SYSTEM CHARACTERISTICS.

KDR DRIVE REACTORS COMPLY WITH THE THERMAL AND ALTITUDE STANDARDS SET FORTH BY NEMA ST20-1992..


NEC MOTOR CURRENTS SHOWN IN THE 208/240 VOLT CHART ARE BASED ON HORSEPOWER AT 208 VOLT. 575/600 VOLT CHART USE THE 575 VOLT CURRENT RATING.

LUG WIRE RANGE ONE 600MCM-4 FOR REACTOR. TWO 250MCM-1/0, AL. OR CU. TIGHTENING TORQUE. 500 LB-IN



VENDOR LILLY POWDER COATINGS, INC. PRODUCT CODE 312E COLOR PEBBLE GRAY POWDER TYPE POLYESTER POLYURETHANE PAINT SUITABLE FOR OUTDOOR APPLICATION PER UL TYPE 3R AND APPLIED PER A UL ACCEPTED DTW2 COATING PROGRAM.

CUSTOMER IS RESPONSIBLE FOR INSTALLATION TO MEET ALL LOCAL AND NATIONAL CODES

				TOLERANCES (EXCEPT AS NOTED)		 7878 N. 86th STREET MILWAUKEE, WI 53224	
				DECIMAL			
				.XX ± .03		KDR DRIVE REACTOR 575V, ENCLOSED, TYPE 1	
				.XXX ± .01			
				FRACTIONAL ± 1/32			
				ANGULAR ± 1/2°			
NO	REVISION	DATE	BY	SCALE	DRN. BY DSW	DATE 6/21/04	DWG. NO. BKDRULL46HE01DG SHT. 1 OF 1