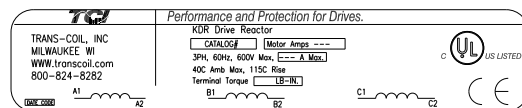


CATALOG NO	VOLTAGE	NEC MOTOR HP	NEC MOTOR CURRENT	WATTS LOSS	APPROX. WEIGHT-LBS	TORQUE (LB-IN)
KDRULL2LE3R	480	500	590	518	190	SEE BELOW

LUG WIRE RANGE TWO 600MCM-2, AL. OR CU. FOR REACTOR.
TIGHTENING TORQUE. 500 LB-IN

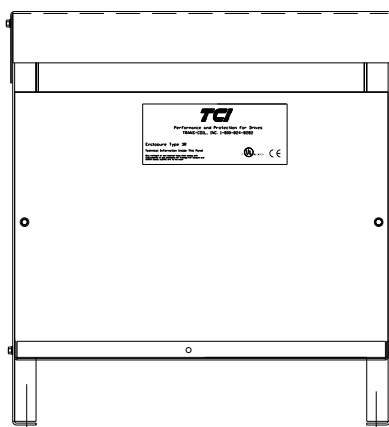
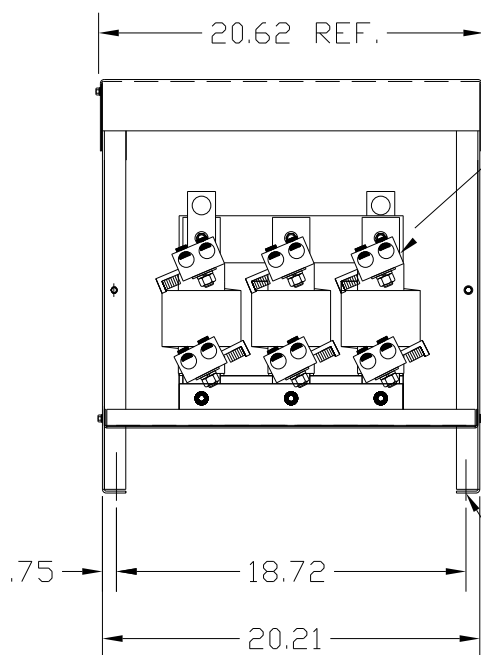
NOTE 1: WATTS LOSS WILL VARY DUE TO FUNDAMENTAL FREQUENCY, CARRIER FREQUENCY AND OTHER SYSTEM CHARACTERISTICS.
KDR DRIVE REACTORS COMPLY WITH THE THERMAL AND ALTITUDE STANDARDS SET FORTH BY NEMA ST20-1992..



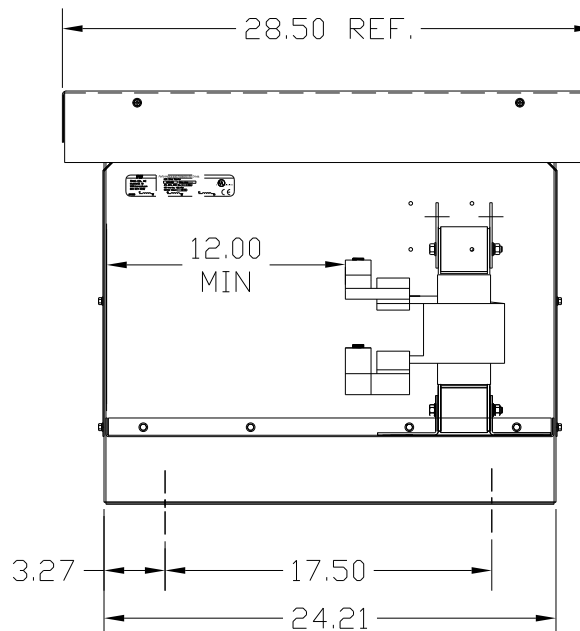
LABEL PLACED ON INSIDE WALL OF CABINET.

NEC MOTOR CURRENTS SHOWN IN THE 208/240 VOLT CHART ARE BASED ON HORSEPOWER AT 208 VOLT. 575/600 VOLT CHART USE THE 575 VOLT CURRENT RATING.

NOTE: ROTATE AS NEEDED TO MEET .50 CLEARANCE BETWEEN TERMINAL OR LUGS (PHASE TO PHASE). ALSO .50 CLEARANCE FROM TERMINALS OR LUGS TO GROUNDING SURFACE.



.50 DIA MOUNTING HOLES 4 PLACES.



CUSTOMER IS RESPONSIBLE FOR INSTALLATION TO MEET ALL NATIONAL AND LOCAL ELECTRICAL CODES.

FINISH:
VENDOR - LILLY POWDER COATINGS, INC.
PRODUCT CODE - 312E
COLOR - PEBBLE GRAY
POWDER TYPE - POLYESTER-POLYURETHANE

PAINT SUITABLE FOR OUTDOOR APPLICATION PER UL TYPE 3R AND APPLIED PER A UL ACCEPTED DTVV2 COATING PROGRAM.

NOTE: USE ONLY HUBS OR FITTINGS THAT COMPLY WITH UL514B FOR TYPE 3R ENCLOSURES.

				TOLERANCES (EXCEPT AS NOTED)		7878 N. 86th STREET MILWAUKEE, WI 53224	
				DECIMAL	.XX ±.03	KDR DRIVE REACTOR 480V, ENCLOSED, TYPE 3R	
				FRACTIONAL	.XXX±.01		
					± 1/32	DRN BY DSW	DATE 8/19/04
				ANGULAR	± 1/2°	SCALE	APRVD
NO	REVISION	DATE	BY			DWG. NO. KDRULL2LE3RDG SHT. 1 OF 1	