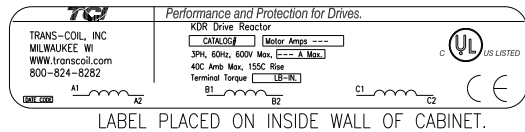
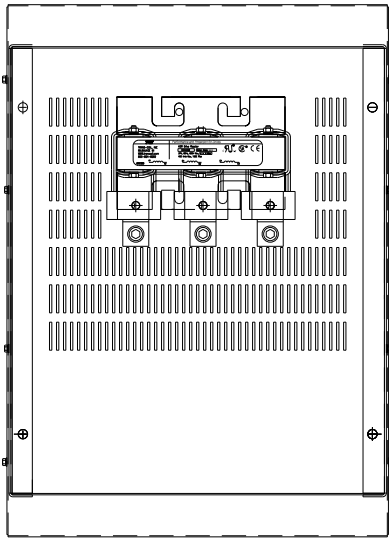


CATALOG NO	VOLTAGE	NEC MOTOR HP	NEC MOTOR CURRENT	WATTS LOSS	APPROX. WEIGHT-LBS	TORQUE (LB-IN)
KDRUL123LE3R	208/240	75	211	294	126	SEE BELOW

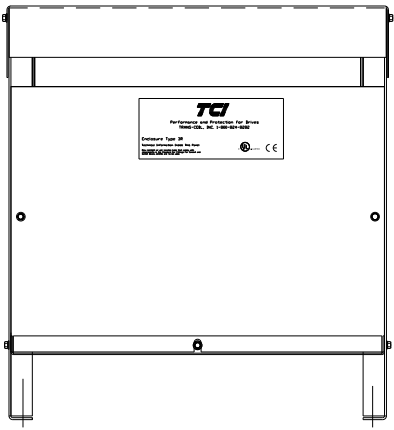
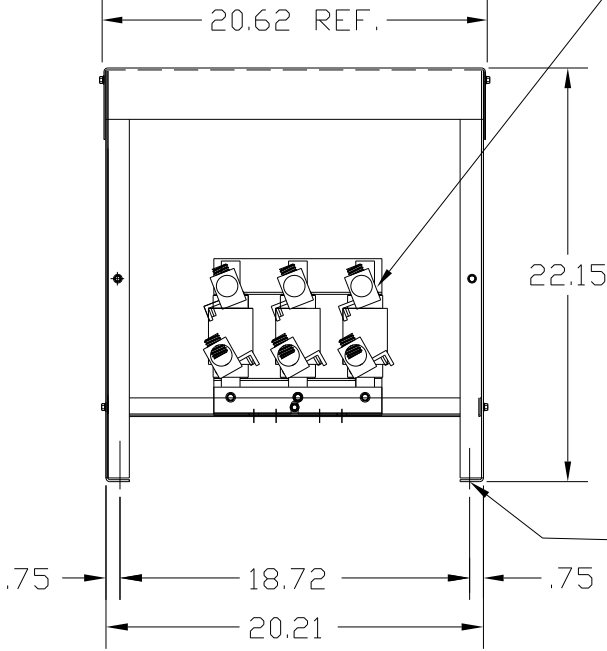


NOTE 1: WATTS LOSS WILL VARY DUE TO FUNDAMENTAL FREQUENCY, CARRIER FREQUENCY AND OTHER SYSTEM CHARACTERISTICS.  
KDR DRIVE REACTORS COMPLY WITH THE THERMAL AND ALTITUDE STANDARDS SET FORTH BY NEMA ST20-1992..

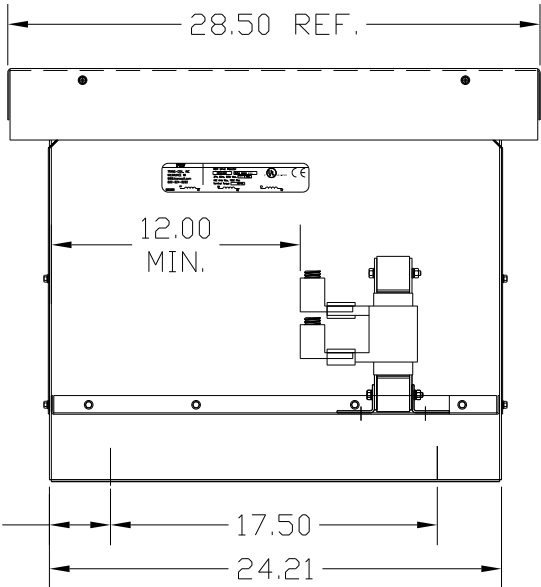
NEC MOTOR CURRENTS SHOWN IN THE 208/240 VOLT CHART ARE BASED ON HORSEPOWER AT 208 VOLT. 575/600 VOLT CHART USE THE 575 VOLT CURRENT RATING.

LUG WIRE RANGE ONE 600MCM-4  
FOR REACTOR. TWO 250MCM-1/0, AL. OR CU.  
TIGHTENING TORQUE. 500 LB-IN

NOTE: ROTATED AS NEEDED TO MEET CLEARANCE BETWEEN TERMINAL OR LUGS (PHASE TO PHASE). ALSO TO MEET CLEARANCE FROM TERMINALS OR LUGS TO GROUNDING SURFACE.



.50 DIA MOUNTING HOLE (4 PLACES)



NOTE: USE ONLY HUBS OR FITTINGS THAT COMPLY WITH UL514B FOR TYPE 3R ENCLOSURES.

CUSTOMER IS RESPONSIBLE FOR INSTALLATION TO MEET ALL NATIONAL AND LOCAL ELECTRICAL CODES.

FINISH:  
VENDOR - LILLY POWDER COATINGS, INC.  
PRODUCT CODE - 312E  
COLOR - PEBBLE GRAY  
POWDER TYPE - POLYESTER-POLYURETHANE  
PAINT SUITABLE FOR OUTDOOR APPLICATION PER UL TYPE 3R AND APPLIED PER A UL ACCEPTED DTVV2 COATING PROGRAM.

				TOLERANCES (EXCEPT AS NOTED)		7878 N. 86th STREET MILWAUKEE, WI 53224	
				DECIMAL	.XX ± .03	KDR DRIVE REACTOR 240V, ENCLOSED, TYPE 3R	
				FRACTIONAL	.XXX ± .01		
				ANGULAR	± 1/32		
NO	REVISION	DATE	BY	SCALE	± 1/2°	DRN BY DSW	DATE 9/22/04
						APRVD	PWG NO KDRUL123LE3RDG SHT.1 OF1