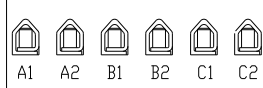


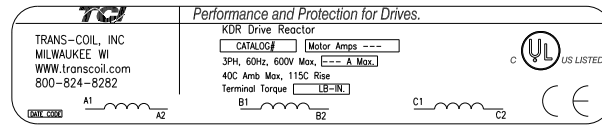
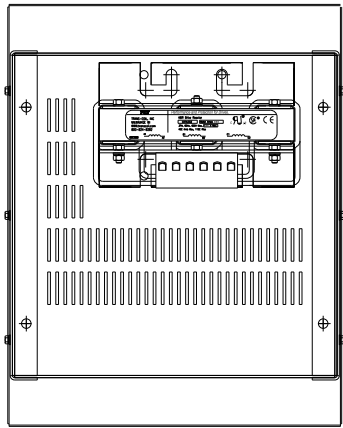
CATALOG NO	VOLTAGE	NEC MOTOR HP	NEC MOTOR CURRENT	WATTS LOSS	APPROX. WEIGHT-LBS	TORQUE (LB-IN)
KDRULH42HE3R	575/600	75	77	251	85	SEE BELOW

NOTE: A1, A2, B1, B2, C1, C2, TERMINAL BLOCK MARKING FOR REFERENCE ONLY.



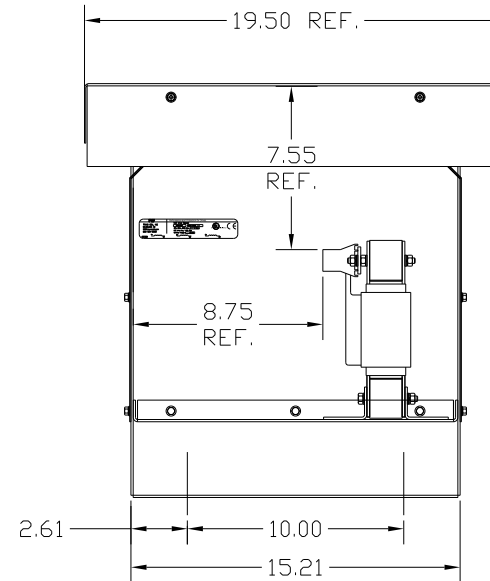
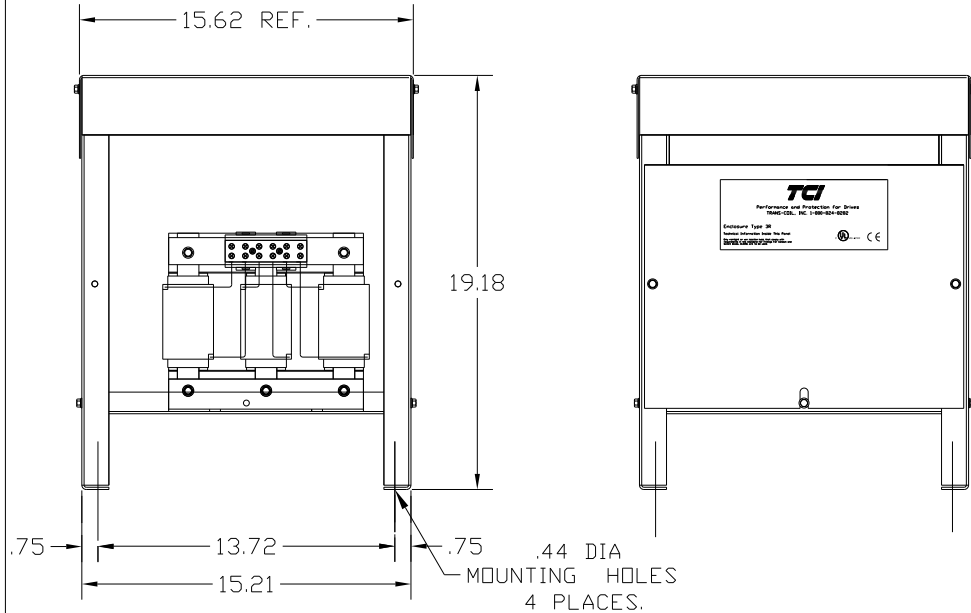
TORQUE(LB-IN)=CUSTOMER WIRE  
 35=1 AWG THRU 4 AWG  
 30=6 AWG THRU 14 AWG  
 25=16 AWG THRU 20 AWG  
 20=22 AWG

NOTE 1: WATTS LOSS WILL VARY DUE TO FUNDAMENTAL FREQUENCY, CARRIER FREQUENCY AND OTHER SYSTEM CHARACTERISTICS.  
 KDR DRIVE REACTORS COMPLY WITH THE THERMAL AND ALTITUDE STANDARDS SET FORTH BY NEMA ST20-1992..



LABEL PLACED ON INSIDE WALL OF CABINET.

NEC MOTOR CURRENTS SHOWN IN THE 208/240 VOLT CHART ARE BASED ON HORSEPOWER AT 208 VOLT. 575/600 VOLT CHART USE THE 575 VOLT CURRENT RATING.



NOTE: USE ONLY HUBS OR FITTINGS THAT COMPLY WITH UL514B FOR TYPE 3R ENCLOSURES.

CUSTOMER IS RESPONSIBLE FOR INSTALLATION TO MEET ALL NATIONAL AND LOCAL ELECTRICAL CODES.

FINISH:  
 VENDOR - LILLY POWDER COATINGS, INC.  
 PRODUCT CODE - 312E  
 COLOR - PEBBLE GRAY  
 POWDER TYPE - POLYESTER-POLYURETHANE  
 PAINT SUITABLE FOR OUTDOOR APPLICATION PER UL TYPE 3R AND APPLIED PER A UL ACCEPTED DTVV2 COATING PROGRAM.

TOLERANCES (EXCEPT AS NOTED)				7878 N. 86th STREET MILWAUKEE, WI 53224
DECIMAL	FRACTIONAL	ANGULAR	SCALE	
.XX ± .03	.XXX ± .01	± 1/32	± 1/2°	<b>KDR DRIVE REACTOR</b> <b>575V, ENCLOSED, TYPE 3R</b>
NO	REVISION	DATE	BY	