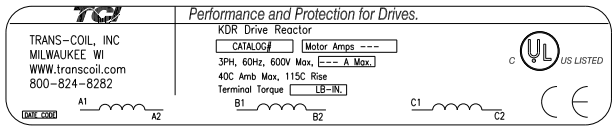
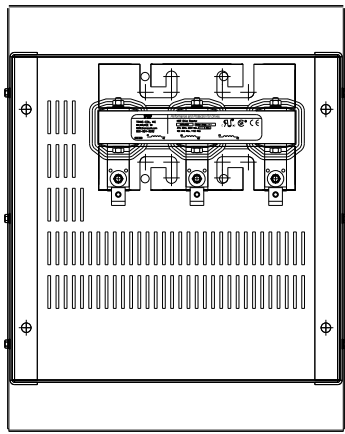


CATALOG NO	VOLTAGE	NEC MOTOR HP	NEC MOTOR CURRENT	WATTS LOSS	APPROX. WEIGHT-LBS	TORQUE (LB-IN)
KDRULH2HE3R	480	75	96	212	82	SEE BELOW

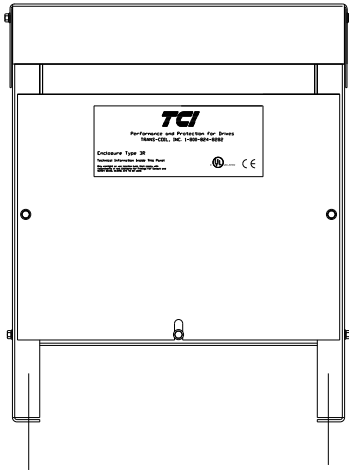
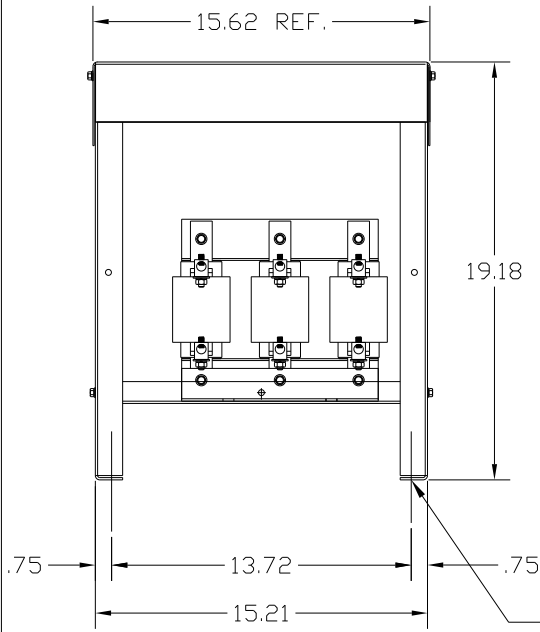
LUG WIRE RANGE 2/0-6, AL OR CU.  
FOR REACTOR.  
TIGHTENING TORQUE. 120 LB-IN

NOTE 1: WATTS LOSS WILL VARY DUE TO FUNDAMENTAL FREQUENCY, CARRIER FREQUENCY AND OTHER SYSTEM CHARACTERISTICS.  
KDR DRIVE REACTORS COMPLY WITH THE THERMAL AND ALTITUDE STANDARDS SET FORTH BY NEMA ST20-1992..

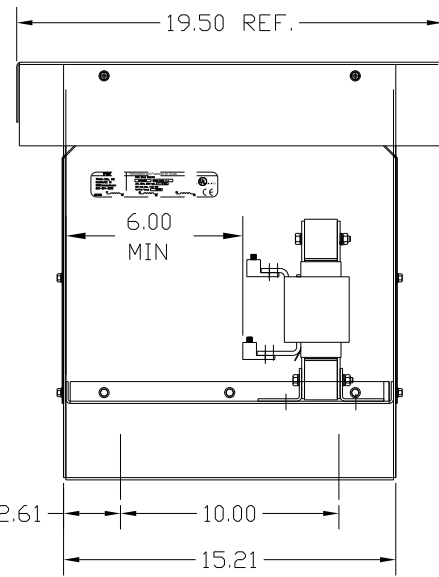
NEC MOTOR CURRENTS SHOWN IN THE 208/240 VOLT CHART ARE BASED ON HORSEPOWER AT 208 VOLT. 575/600 VOLT CHART USE THE 575 VOLT CURRENT RATING.



LABEL PLACED ON INSIDE WALL OF CABINET.



.44 DIA MOUNTING HOLES 4 PLACES.



NOTE: USE ONLY HUBS OR FITTINGS THAT COMPLY WITH UL514B FOR TYPE 3R ENCLOSURES.

CUSTOMER IS RESPONSIBLE FOR INSTALLATION TO MEET ALL NATIONAL AND LOCAL ELECTRICAL CODES.

FINISH:  
VENDOR - LILLY POWDER COATINGS, INC.  
PRODUCT CODE - 312E  
COLOR - PEBBLE GRAY  
POWDER TYPE - POLYESTER-POLYURETHANE  
PAINT SUITABLE FOR OUTDOOR APPLICATION PER UL TYPE 3R AND APPLIED PER A UL ACCEPTED DTVV2 COATING PROGRAM.

NO	REVISION	DATE	BY	TOLERANCES (EXCEPT AS NOTED)	DECIMAL	FRAC TIONAL	ANGULAR	SCALE	DRN BY	DATE	DWG NO
				.XX ± .03		± 1/32	± 1/2°		DSW	9/20/04	KDRULH2HE3R
				.XXX ± .01							D
											SHT.1 OF1

**TCL** 7878 N. 86th STREET MILWAUKEE, WI 53224

KDR DRIVE REACTOR 480V, ENCLOSED, TYPE 3R