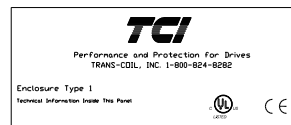
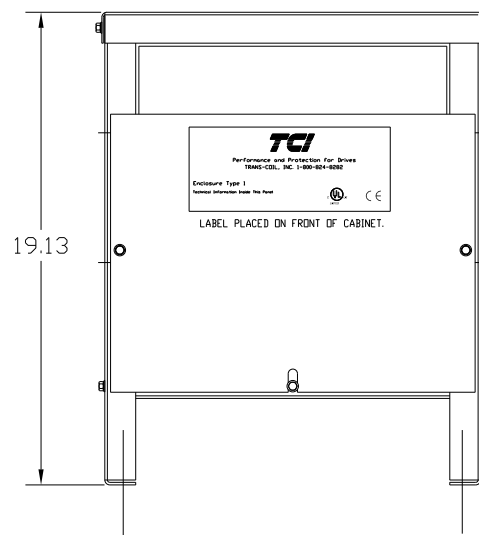
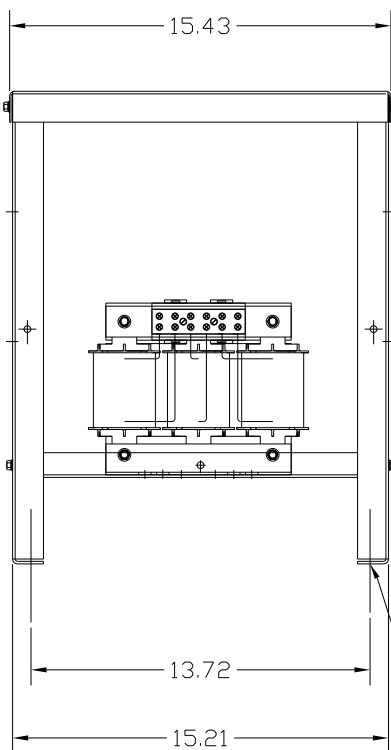


LABEL PLACED ON INSIDE WALL OF CABINET.

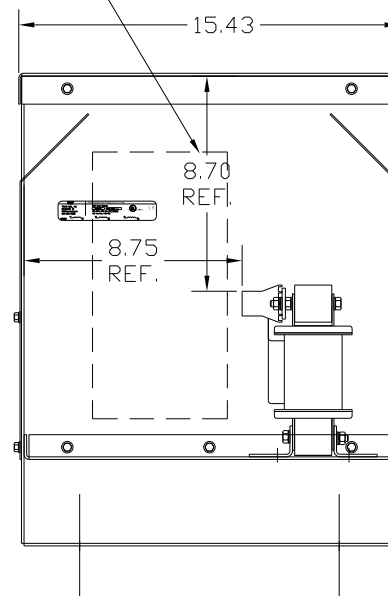
RECOMMENDED CONDUIT  
ENTRANCE AREA - LEFT FRONT SIDE,  
BOTTOM FRONT. RIGHT FRONT SIDE AND  
TOP.



LABEL PLACED ON FRONT OF CABINET.



.44 DIA  
MOUNTING HOLES  
4 PLACES.



VENDOR LILLY POWDER COATINGS, INC.  
PRODUCT CODE 312E  
COLOR PEBBLE GRAY  
POWDER TYPE POLYESTER POLYURETHANE

PAINT SUITABLE FOR OUTDOOR APPLICATION PER UL TYPE 3R  
AND APPLIED PER A UL ACCEPTED DTV2 COATING PROGRAM.

CATALOG NO	VOLTAGE	NEC MOTOR HP	NEC MOTOR CURRENT	WATTS LOSS	APPROX. WEIGHT-LBS
KDRULF32PE01	575	75	77	SEE NOTE: 1	67

NOTE 1: WATTS LOSS WILL VARY DUE TO FUNDAMENTAL FREQUENCY,  
CARRIER FREQUENCY AND OTHER SYSTEM CHARACTERISTICS.

KDR DRIVE REACTORS COMPLY WITH THE THERMAL AND  
ALTITUDE STANDARDS SET FORTH BY NEMA ST20-1992..

NEC MOTOR CURRENTS SHOWN IN THE 208/240 VOLT CHART  
ARE BASED ON HORSEPOWER AT 208 VOLT. 575/600 VOLT  
CHART USE THE 575 VOLT CURRENT RATING.


NOTE: A1, A2, B1, B2, C1, C2,  
TERMINAL BLOCK  
FOR REFERENCE ONLY.



TERMINAL BLK MARKING

TORQUE(LB-IN)=CUSTOMER WIRE  
35=1 AWG THRU 4 AWG  
30=6 AWG THRU 14 AWG  
25=16 AWG THRU 20 AWG  
20=22 AWG

CUSTOMER IS RESPONSIBLE FOR INSTALLATION  
TO MEET ALL LOCAL AND NATIONAL CODES

				TOLERANCES (EXCEPT AS NOTED)	 7878 N. 86th STREET MILWAUKEE, WI 53224
				DECIMAL	
				.XX ± .03	
				.XXX± .01	
				FRACTIONAL ± 1/32	
				ANGULAR ± 1/2°	DRN. BY DSW      DATE 6/21/04      DWG. NO. B KDRULF32PE01DG
NO	REVISION	DATE	BY		SCALE      APRVD.      SHT. 1 OF 1