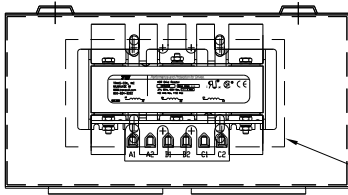
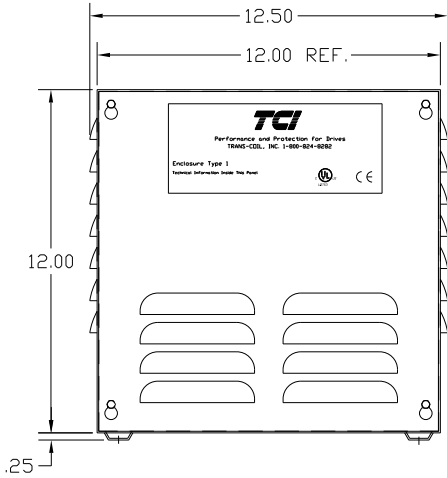
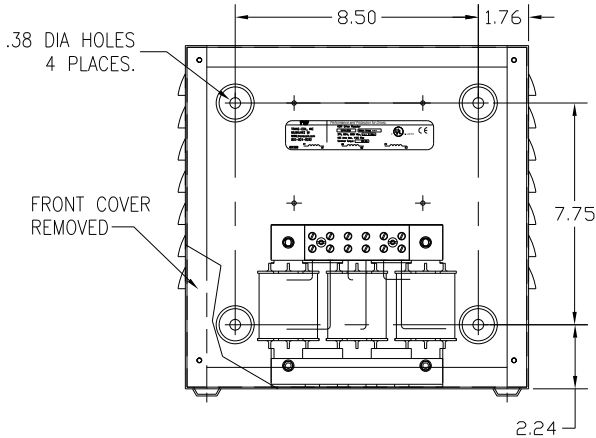


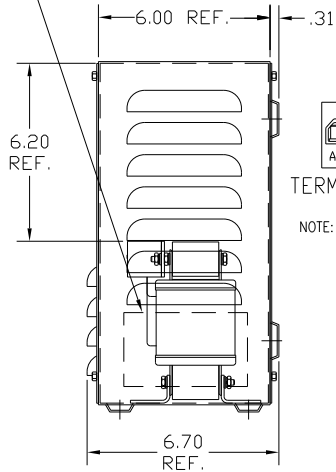
CATALOG NO	VOLTAGE	NEC MOTOR HP	NEC MOTOR CURRENT	WATTS LOSS	APPROX. WEIGHT-LBS	TORQUE (LB-IN)
KDRULE2HE01	480	30	40	141	26.50	20



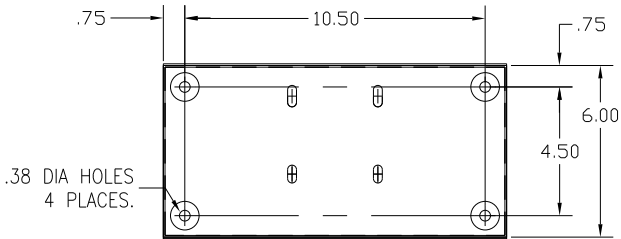
RECOMMENDED CONDUIT  
ENTRANCE AREA –  
TOP, LOWER LEFT SIDE, AND  
LOWER RIGHT SIDE.



BLOCK WIRE RANGE FOR REACTOR AND TIGHTENING TORQUE.	#18-#4 AWG 20 LB-IN
---	------------------------



TERMINAL BLK MARKING  
NOTE: A1, A2, B1, B2, C1, C2,  
MARKING ON TERMINAL BLOCK  
FOR REFERENCE ONLY.




CUSTOMER IS RESPONSIBLE FOR INSTALLATION  
TO MEET ALL LOCAL AND NATIONAL CODES

NOTE 1: WATTS LOSS WILL VARY DUE TO FUNDAMENTAL FREQUENCY,  
CARRIER FREQUENCY AND OTHER SYSTEM CHARACTERISTICS.  
KDR DRIVE REACTORS COMPLY WITH THE THERMAL AND  
ALTITUDE STANDARDS SET FORTH BY NEMA ST20-1992..

NEC MOTOR CURRENTS SHOWN IN THE 208/240 VOLT CHART  
ARE BASED ON HORSEPOWER AT 208 VOLT. 575/600 VOLT  
CHART USE THE 575 VOLT CURRENT RATING.

VENDOR LILLY POWDER COATINGS, INC.  
PRODUCT CODE 312E  
COLOR PEBBLE GRAY  
POWDER TYPE POLYESTER POLYURETHANE

PAINT SUITABLE FOR OUTDOOR APPLICATION PER UL TYPE 3R  
AND APPLIED PER A UL ACCEPTED DTW2 COATING PROGRAM.

NO	REVISION	DATE	BY	TOLERANCES (EXCEPT AS NOTED)	 7878 N. 86th STREET MILWAUKEE, WI 53224
				DECIMAL	
				.XX ± .03	
				.XXX ± .01	
				FRACTIONAL ± 1/32	
NO	REVISION	DATE	BY	ANGULAR ± 1/2°	KDR DRIVE REACTOR 480V, ENCLOSED, TYPE 1 DRN. BY DSW DATE 6/24/04 DWG. NO. B KDRULE2HE01DG SCALE APRVD. SHT. 1 OF 1