

.31" WIDE SLOT

TCI Performance and Protection for Drives.

TRANS-COIL, INC
MILWAUKEE, WI
WWW.Transcoil.com
800-824-8282

KDR Drive Reactor
CATALOG Motor Amps ---
3PH, 60Hz, 600V Max, --- A Max.
40C Amb Max, 115C Rise
Terminal Torque LB-IN

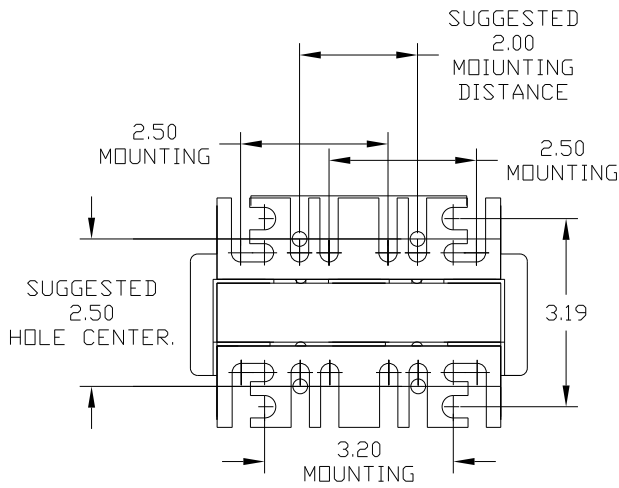
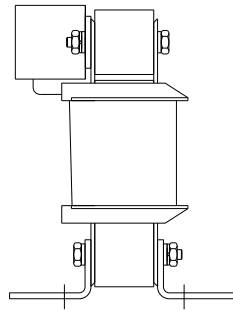
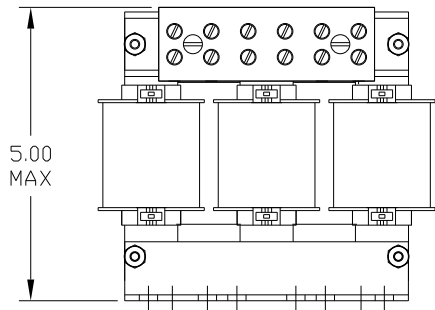
UL US LISTED

A1 A2 B1 B2 C1 C2

CATALOG NO	VOLTAGE	NEC MOTOR HP	NEC MOTOR CURRENT	WATTS LOSS	APPROX. WEIGHT-LBS	TORQUE (LB-IN)
KDRULB45L	575/600	15	17	66.2	8	20


NOTE 1: WATTS LOSS WILL VARY DUE TO FUNDAMENTAL FREQUENCY, CARRIER FREQUENCY AND OTHER SYSTEM CHARACTERISTICS.
KDR DRIVE REACTORS COMPLY WITH THE THERMAL AND ALTITUDE STANDARDS SET FORTH BY NEMA ST20-1992..

NEC MOTOR CURRENTS SHOWN IN THE 208/240 VOLT CHART ARE BASED ON HORSEPOWER AT 208 VOLT. 575/600 VOLT CHART USE THE 575 VOLT CURRENT RATING.



NOTE: A1, A2, B1, B2, C1, C2, MARKINGS ON TERMINAL BLOCK FOR REFERENCE ONLY.

Block Wire Range: #18 to #4 AWG Solid or Stranded, Copper
Tightening Torque: 20 LB-IN

NO	REVISION	DATE	BY	TOLERANCES (EXCEPT AS NOTED)	 7878 N. 86th STREET MILWAUKEE, WI 53224 KDR Optimized Drive Reactor 15HP, 575/600V, 17 Amps.
				DECIMAL	
				.XX ± .03	SCALE TO FIT
				.XXX ± .01	APPRVD.
				FRACTIONAL ± 1/32	SHT. 1 of 1
				ANGULAR ± 1/2°	