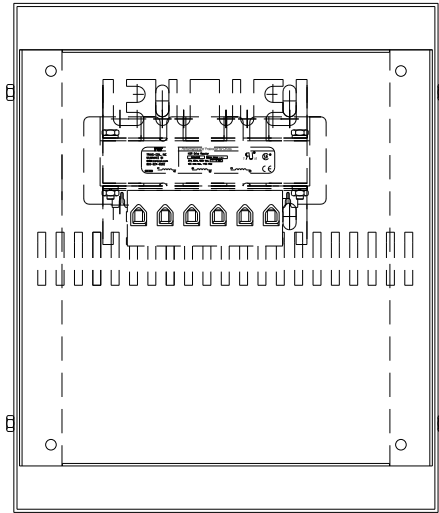
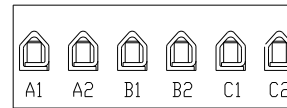


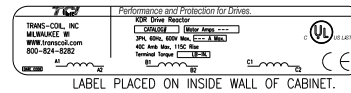
CATALOG NO	VOLTAGE	NEC MOTOR HP	NEC MOTOR CURRENT	WATTS LOSS	APPROX. WEIGHT-LBS	TORQUE (LB-IN)
KDRULB2LE3R	480	15	21	65	23	20



NOTE: A1, A2, B1, B2, C1, C2,
MARKINGS ON TERMINAL BLOCK
FOR REFERENCE ONLY.

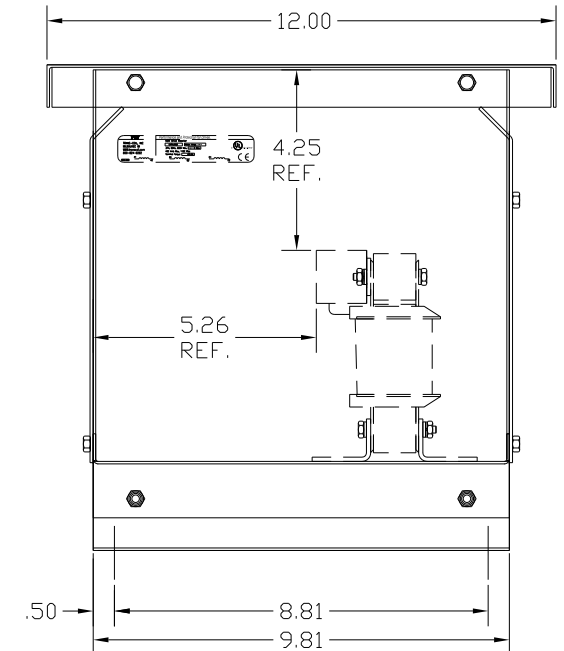
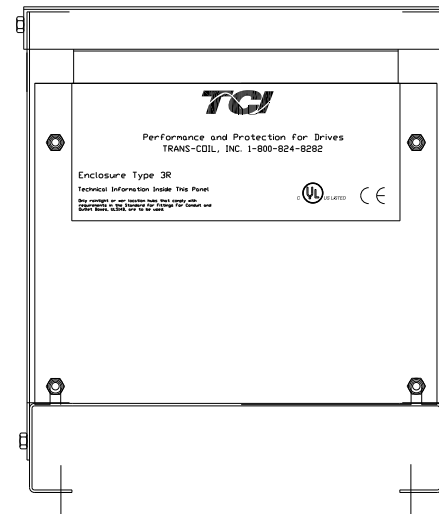
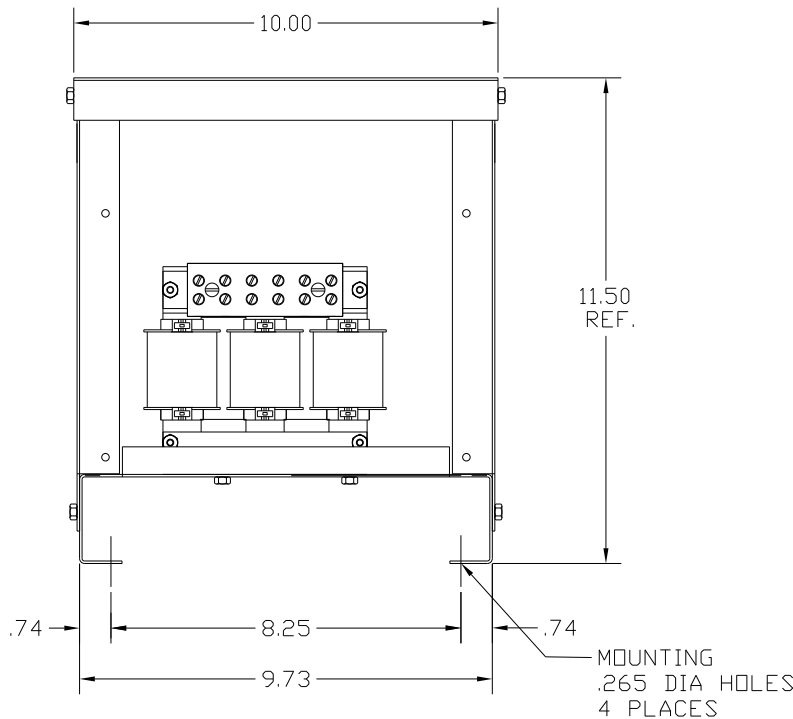


TERMINAL BLK MARKING



NOTE 1: WATTS LOSS WILL VARY DUE TO FUNDAMENTAL FREQUENCY,
CARRIER FREQUENCY AND OTHER SYSTEM CHARACTERISTICS.
KDR DRIVE REACTORS COMPLY WITH THE THERMAL AND
ALTITUDE STANDARDS SET FORTH BY NEMA ST20-1992..


NEC MOTOR CURRENTS SHOWN IN THE 208/240 VOLT CHART
ARE BASED ON HORSEPOWER AT 208 VOLT. 575/600 VOLT
CHART USE THE 575 VOLT CURRENT RATING.



CUSTOMER IS RESPONSIBLE FOR INSTALLATION
TO MEET ALL NATIONAL AND LOCAL ELECTRICAL CODES.

NOTE: USE ONLY HUBS OR FITTINGS THAT COMPLY
WITH UL514B FOR TYPE 3R ENCLOSURES.

FINISH:
VENDOR - LILLY POWDER COATINGS, INC.
PRODUCT CODE - 312E
COLOR - PEBBLE GRAY
POWDER TYPE - POLYESTER-POLYURETHANE
PAINT SUITABLE FOR OUTDOOR APPLICATION PER UL TYPE 3R
AND APPLIED PER A UL ACCEPTED DTVV2 COATING PROGRAM.

				TOLERANCES (EXCEPT AS NOTED)	 7878 N. 86th STREET MILWAUKEE, WI 53224 KDR DRIVE REACTOR 480V, ENCLOSED, TYPE 3R
				DECIMAL	
				.XX ±.03	
				.XXX±.01	
				FRACTIONAL ± 1/32	
				ANGULAR ± 1/2°	DRN. BY DSW DATE 9/20/04 DWG. NO. SCALE APRVD. BKDRULB2LE3RDRG SHT. 1 OF 1
NO	REVISION	DATE	BY		