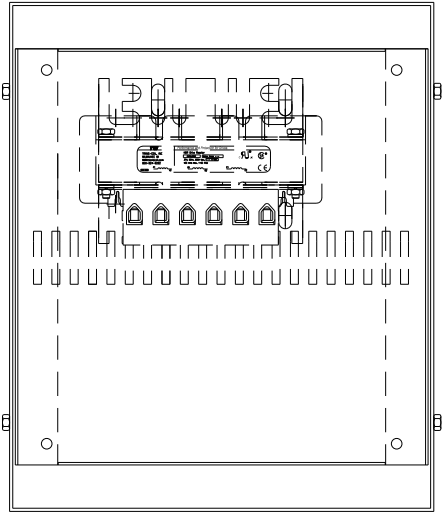
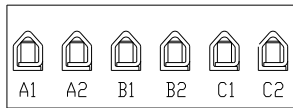


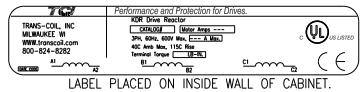
CATALOG NO	VOLTAGE	NEC MOTOR HP	NEC MOTOR CURRENT	WATTS LOSS	APPROX. WEIGHT-LBS	TORQUE (LB-IN)
KDRULB23LE3R	208/240	7.5	24.2	48	23	20



NOTE: A1, A2, B1, B2, C1, C2,  
MARKINGS ON TERMINAL BLOCK  
FOR REFERENCE ONLY.

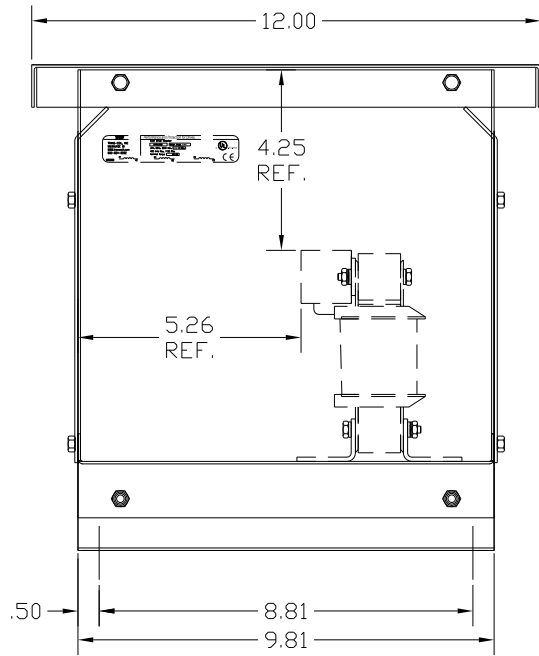
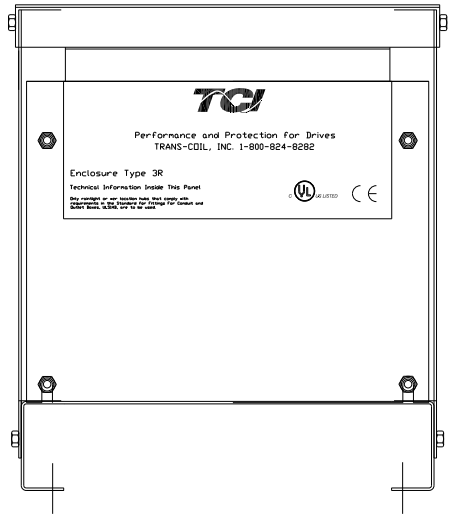
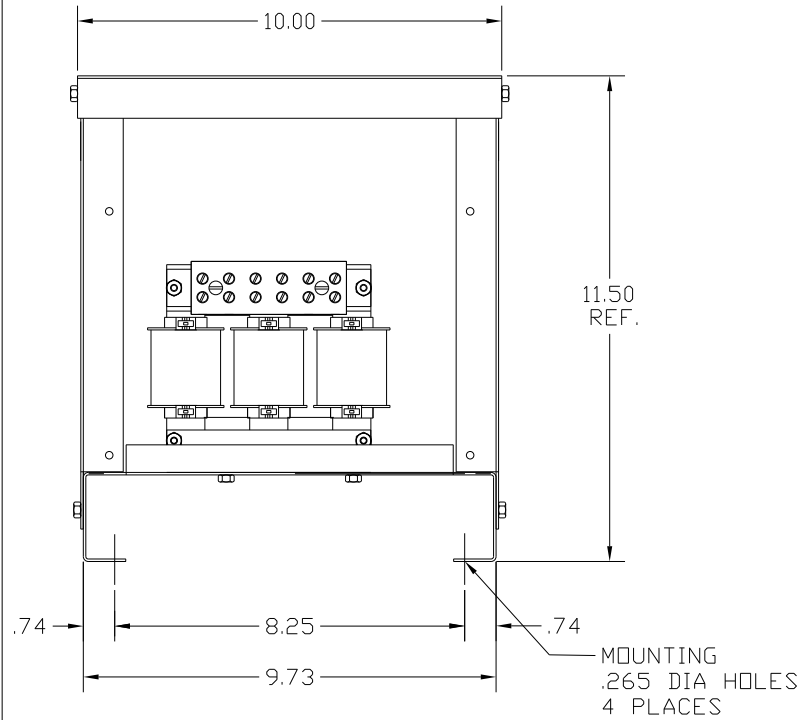


### TERMINAL BLK MARKING



NOTE 1: WATTS LOSS WILL VARY DUE TO FUNDAMENTAL FREQUENCY,  
CARRIER FREQUENCY AND OTHER SYSTEM CHARACTERISTICS.  
KDR DRIVE REACTORS COMPLY WITH THE THERMAL AND  
ALTITUDE STANDARDS SET FORTH BY NEMA ST20-1992..


NEC MOTOR CURRENTS SHOWN IN THE 208/240 VOLT CHART  
ARE BASED ON HORSEPOWER AT 208 VOLT. 575/600 VOLT  
CHART USE THE 575 VOLT CURRENT RATING.



NOTE: USE ONLY HUBS OR FITTINGS THAT COMPLY  
WITH UL514B FOR TYPE 3R ENCLOSURES.

VENDOR - LILLY POWDER COATINGS, INC.  
PRODUCT CODE - 312E  
COLOR - PEBBLE GRAY  
POWDER TYPE - POLYESTER-POLYURETHANE  
PAINT SUITABLE FOR OUTDOOR APPLICATION PER UL TYPE 3R  
AND APPLIED PER A UL ACCEPTED DTVV2 COATING PROGRAM.

CUSTOMER IS RESPONSIBLE FOR INSTALLATION  
TO MEET ALL NATIONAL AND LOCAL ELECTRICAL CODES.

				TOLERANCES (EXCEPT AS NOTED)	 8787 N. 86th STREET MILWAUKEE, WI 53224	
				DECIMAL		
				.XX ±.03		
				.XXX±.01		
				FRACTIONAL	KDR DRIVE REACTOR 240V, ENCLOSED, TYPE 3R	
				± 1/32		
				ANGULAR		
				± 1/2°	DRN. BY DSW	DATE 9/20/04
				SCALE	APRVD.	DWG. NO. KDRULB23LE3RDG SHT. 1 OF 1
NO	REVISION	DATE	BY			