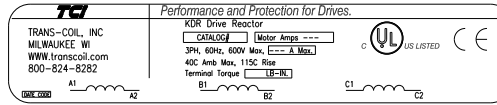
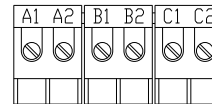
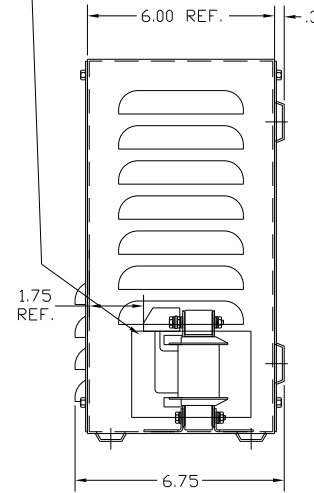
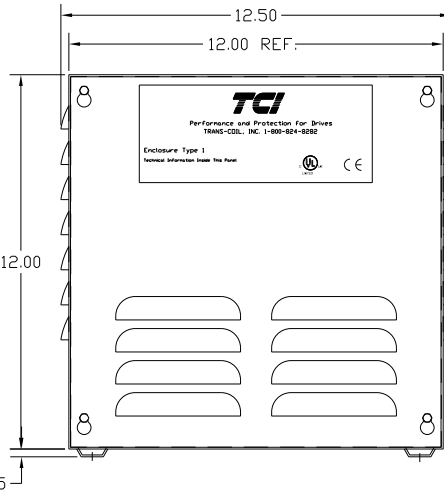
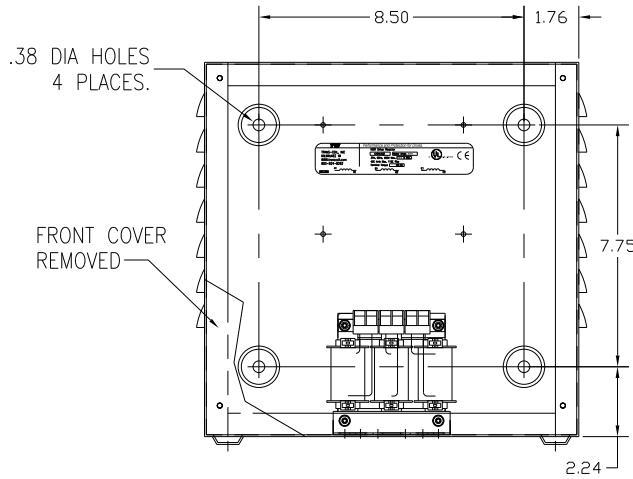
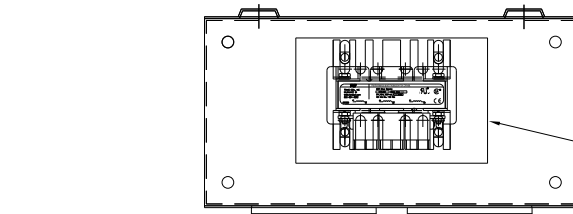


CATALOG NO	VOLTAGE	NEC MOTOR HP	NEC MOTOR CURRENT	WATTS LOSS	APPROX. WEIGHT-LBS	TORQUE (LB-IN)
KDRULA7HE01	480	.75	1.6	15	14.50	10



LABEL PLACED ON INSIDE WALL OF CABINET.

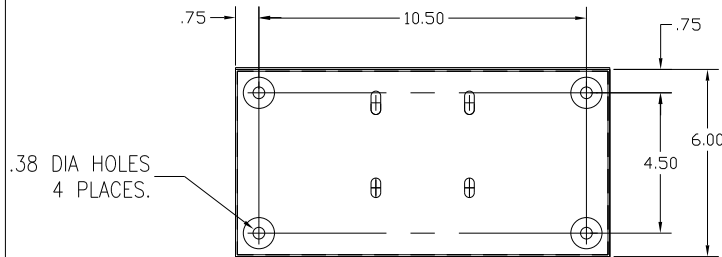
RECOMMENDED CONDUIT
ENTRANCE AREA
TOP, LOWER LEFT SIDE, AND
LOWER RIGHT SIDE.



BLOCK WIRE RANGE
FOR REACTOR AND
TIGHTENING TORQUE. #12-#18 AWG
10 LB-IN

TERMINAL BLK MARKING

NOTE: A1, A2, B1, B2, C1, C2,
TERMINAL BLOCK
FOR REFERENCE ONLY.



CUSTOMER IS RESPONSIBLE FOR INSTALLATION
TO MEET ALL LOCAL AND NATIONAL CODES

NOTE 1: WATTS LOSS WILL VARY DUE TO FUNDAMENTAL FREQUENCY,
CARRIER FREQUENCY AND OTHER SYSTEM CHARACTERISTICS.
KDR DRIVE REACTORS COMPLY WITH THE THERMAL AND
ALTITUDE STANDARDS SET FORTH BY NEMA ST20-1992.

NEC MOTOR CURRENTS SHOWN IN THE 208/240 VOLT CHART
ARE BASED ON HORSEPOWER AT 208 VOLT. 575/600 VOLT
CHART USE THE 575 VOLT CURRENT RATING.

VENDOR LILLY POWDER COATINGS, INC.
PRODUCT CODE 312E
COLOR PEBBLE GRAY
POWDER TYPE POLYESTER POLYURETHANE

PAINT SUITABLE FOR OUTDOOR APPLICATION PER UL TYPE 3R
AND APPLIED PER A UL ACCEPTED DTW2 COATING PROGRAM.

				TOLERANCES (EXCEPT AS NOTED): DECIMAL .XX ± .03 .XXX ± .01 FRACTIONAL ± 1/32 ANGULAR ± 1/2°	8778 N. 86th STREET MILWAUKEE, WI 53224 KDR DRIVE REACTOR 480V, ENCLOSED, TYPE 1 DRN. BY DSW DATE 6/24/04 DWG. NO. BKDRULA7HE01DG SCALE APRVD. SHT. 1 OF 1
NO	REVISION	DATE	BY		