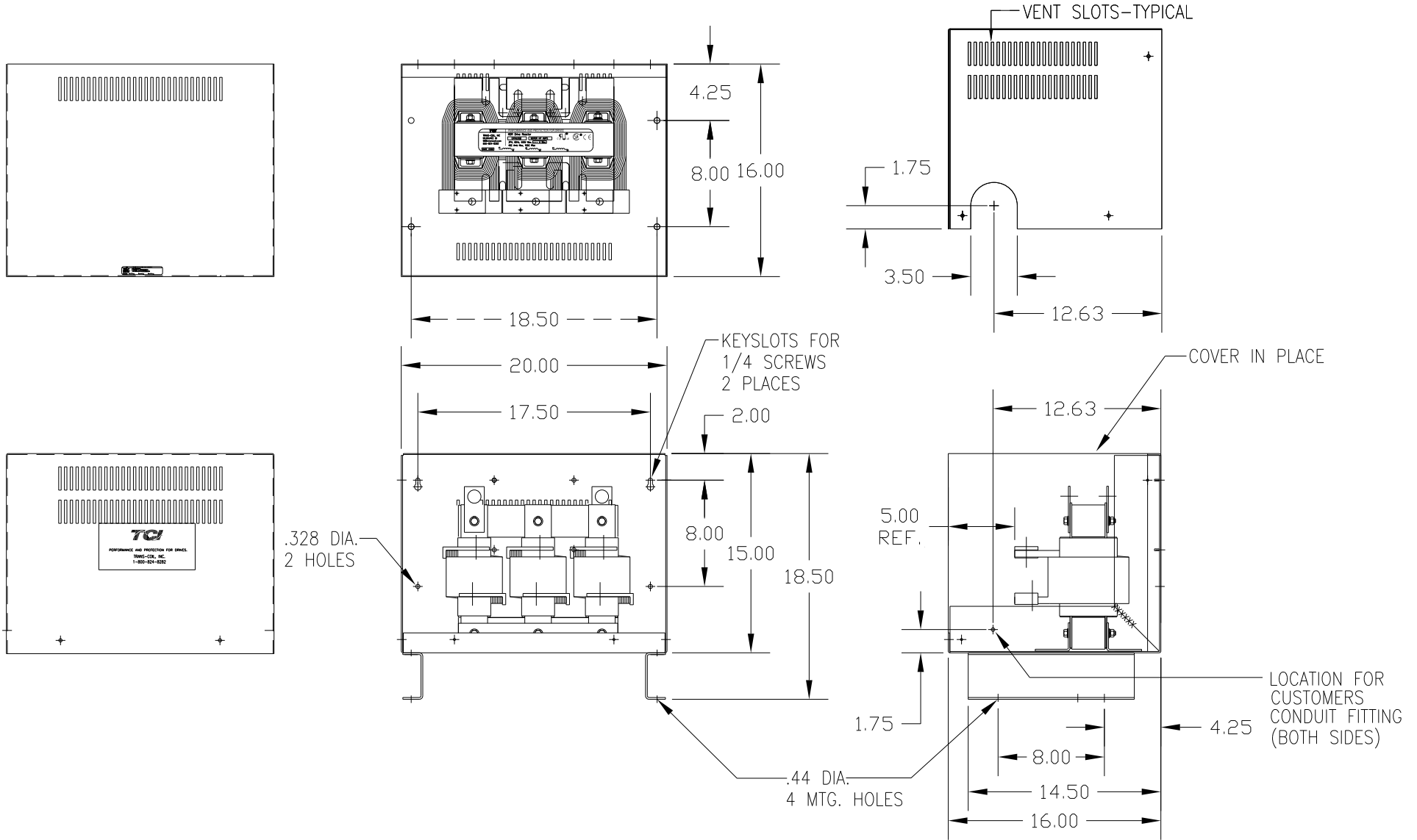


CATALOG NO	VOLTAGE	NEC MOTOR HP	NEC MOTOR CURRENT	WATTS LOSS	APPROX. WEIGHT-LBS	TERMINAL HOLE SIZE
KDRL4PC5	480	500	590	NOTE:1	150	.53

NOTE 1: WATTS LOSS WILL VARY DUE TO FUNDAMENTAL FREQUENCY, CARRIER FREQUENCY AND OTHER SYSTEM CHARACTERISTICS.
 KDR DRIVE REACTORS COMPLY WITH THE THERMAL AND ALTITUDE STANDARDS SET FORTH BY NEMA ST20-1992..



CUSTOMER IS RESPONSIBLE FOR INSTALLATION
 TO MEET ALL NATIONAL AND LOCAL ELECTRICAL CODES.

TOLERANCES (EXCEPT AS NOTED)				TCI 7878 N. 86th STREET MILWAUKEE, WI 53224	
DECIMAL				KDR OUTPUT REACTOR 480V, FRAME L	
.XX ± .03					
.XXX ± .01					
FRACTIONAL ± 1/32					
ANGULAR ± 1/2°				DRN BY DSW	DATE 1/26/12
NO	REVISION	DATE	BY	SCALE	APRVD. B
					DWG. NO. KDRL4PC5DG
					SHT. 1 OF 1