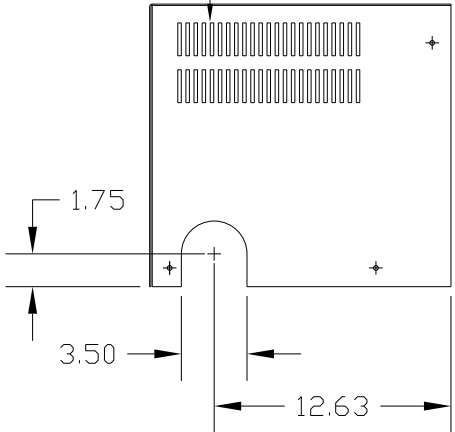
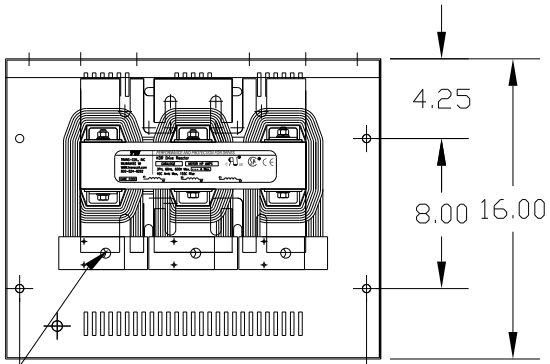
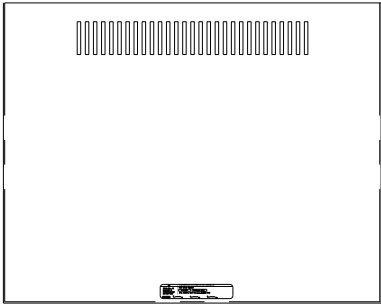
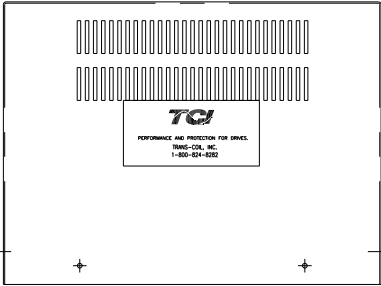
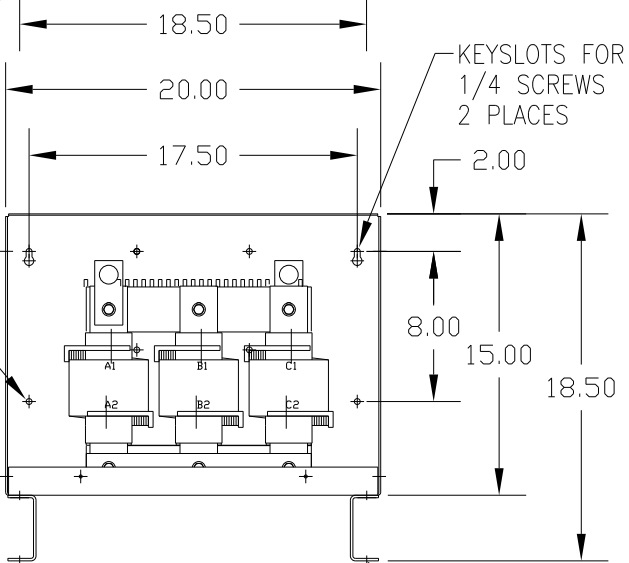


CATALOG NO	VOLTAGE	NEC MOTOR HP	NEC MOTOR CURRENT	WATTS LOSS	APPROX WT-LBS
KDRL48HC5	575/600	350	336	539	160

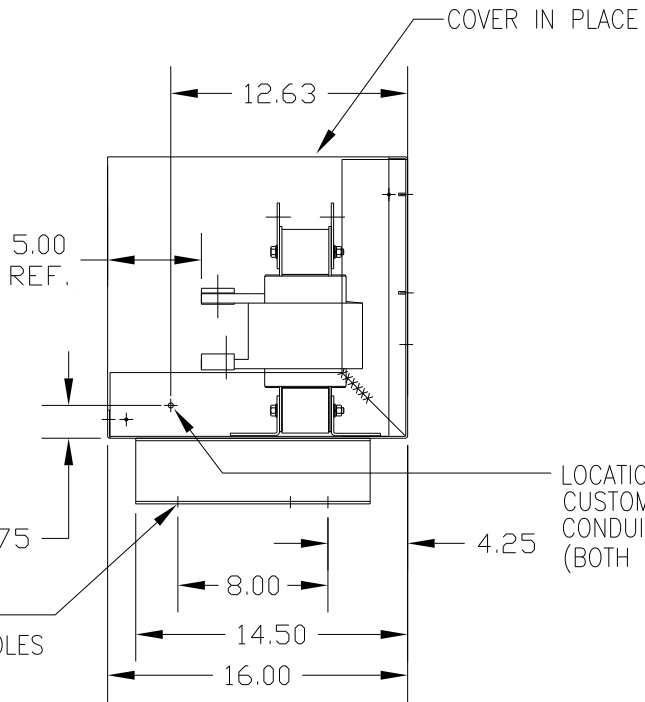
VENT SLOTS—TYPICAL  
NEC MOTOR CURRENT(S) SHOWN ARE BASED ON HORSEPOWER(S) AT 575 VOLTS.



.53 DIA HOLE  
(6 PLACES).



.328 DIA.  
2 HOLES



.44 DIA.  
4 MTG. HOLES

CUSTOMER IS RESPONSIBLE FOR INSTALLATION  
TO MEET ALL NATIONAL AND LOCAL ELECTRICAL CODES.

				TOLERANCES (EXCEPT AS NOTED)		7878 N. 86th STREET MILWAUKEE, WI 53224	
				DECIMAL			
				.XX ± .03		KDR DRIVE REACTOR, ENCLOSED 600V HIGH Z, FRAME L	
				.XXX ± .01			
				FRACTIONAL		DRN. BY DSW DATE 02/13/12 DWG. NO. B	
				± 1/32		KDR L48HC5DG	
				ANGULAR		SCALE TO FIT	
				± 1/2°		APRVD B SHT. 1 OF 1	
NO	REVISION	DATE	BY				