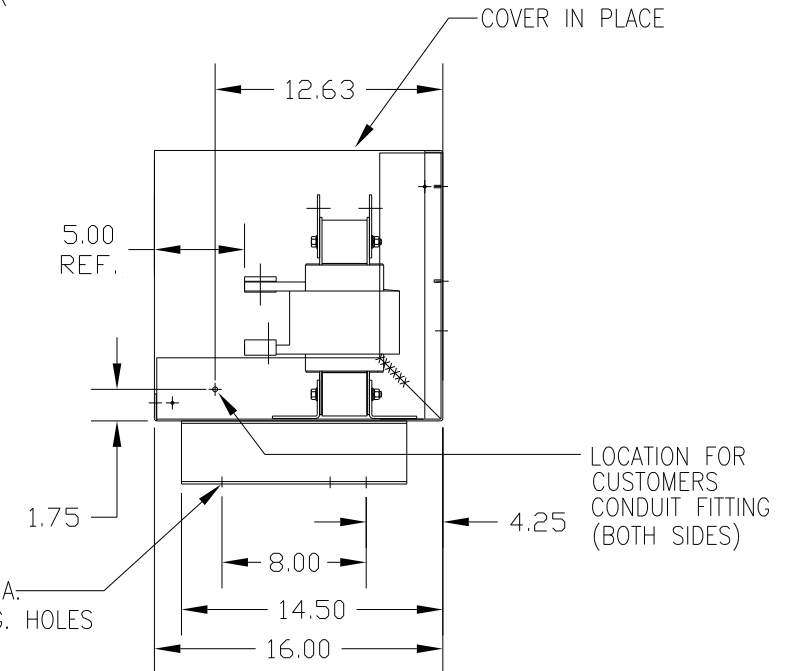
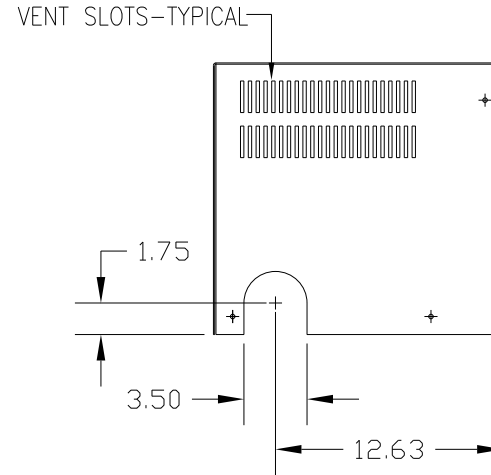
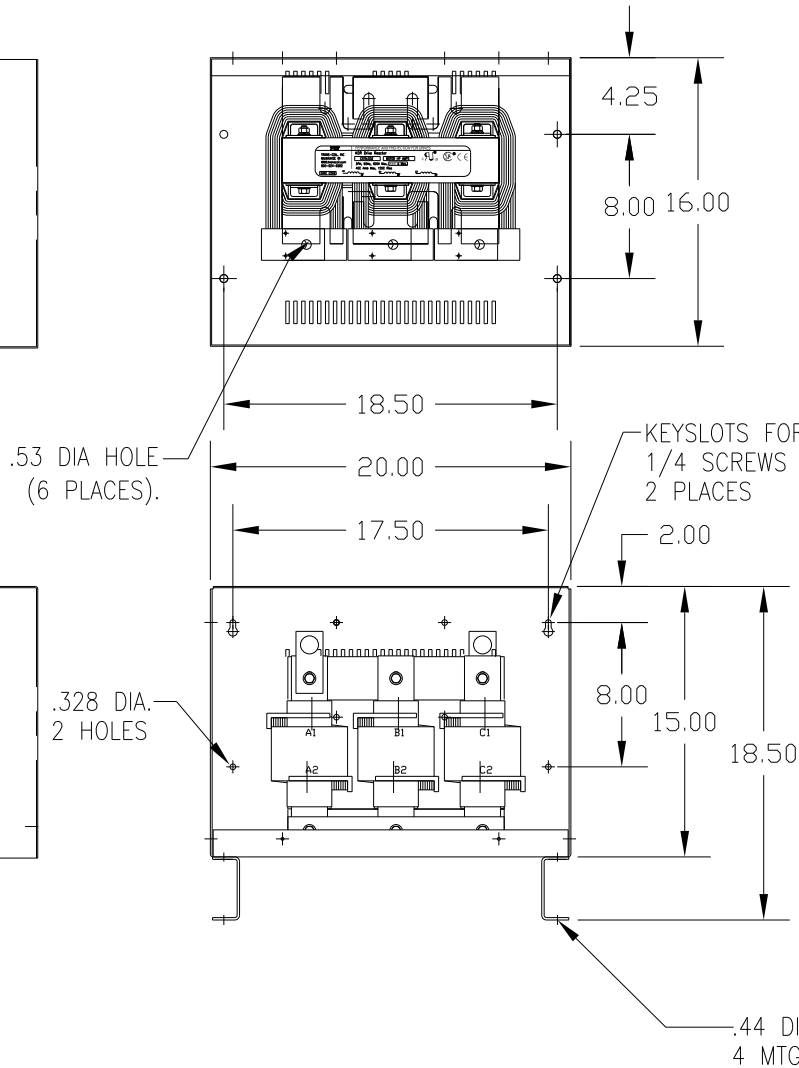
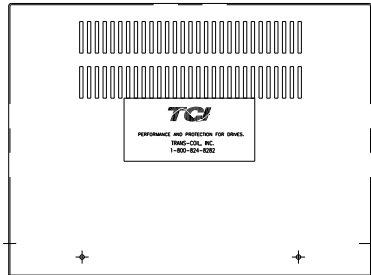
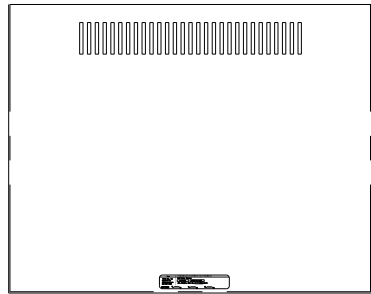


CATALOG NO	VOLTAGE	NEC MOTOR HP	NEC MOTOR CURRENT	WATTS LOSS	APPROX WT-LBS
KDRL47HC5	575/600	300	289	490	160

NEC MOTOR CURRENT(S) SHOWN ARE BASED ON HORSEPOWER(S) AT 575 VOLTS.



CUSTOMER IS RESPONSIBLE FOR INSTALLATION TO MEET ALL NATIONAL AND LOCAL ELECTRICAL CODES.

			TOLERANCES (EXCEPT AS NOTED): DECIMAL .XX ± .03 .XXX ± .01 FRACTIONAL ± 1/32 ANGULAR ± 1/2°	7878 N. 86th STREET MILWAUKEE, WI 53224 KDR DRIVE REACTOR, ENCLOSED 600V HIGH Z, FRAME L
NO	REVISION	DATE	BY	