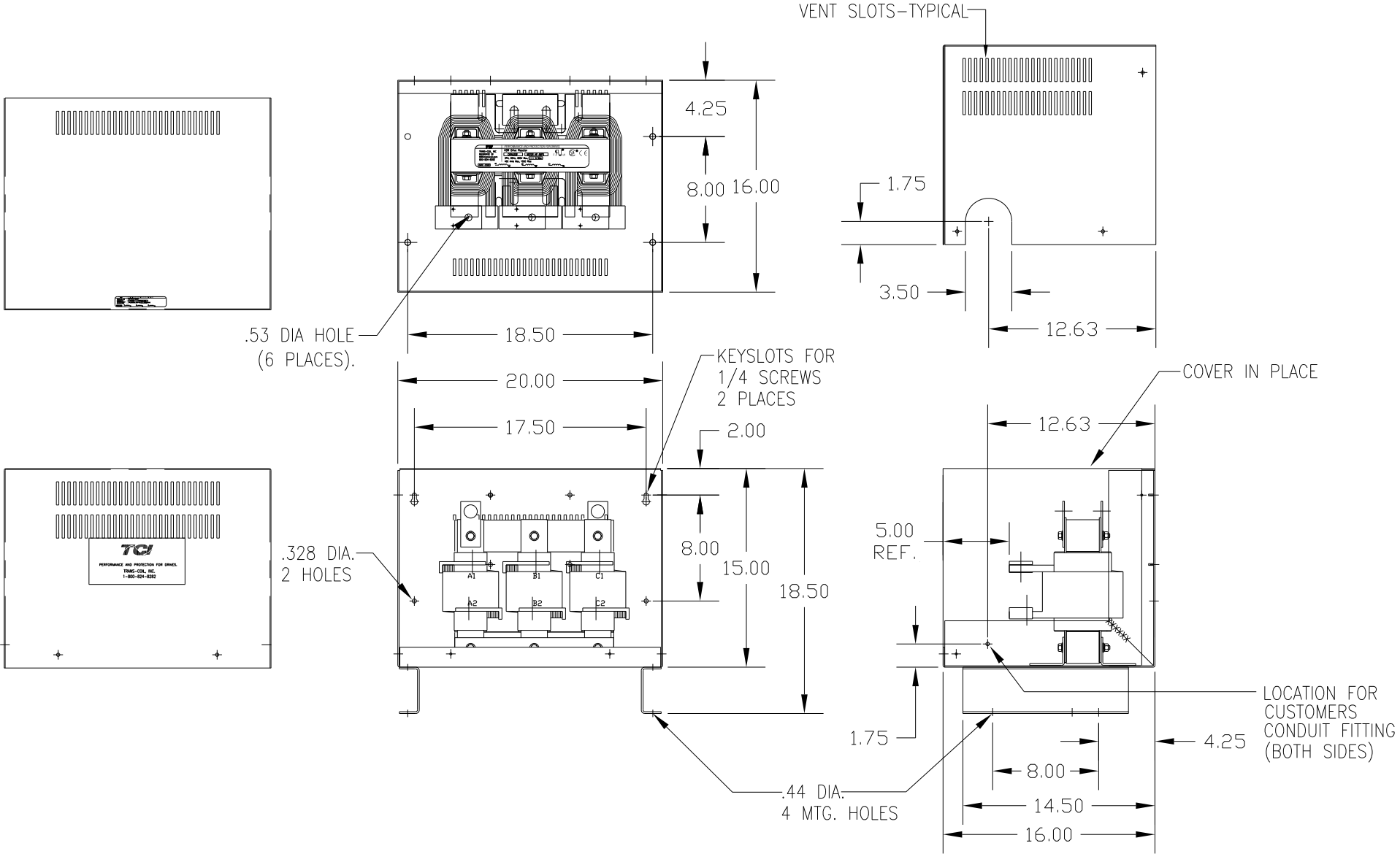


CATALOG NO	VOLTAGE	NEC MOTOR HP	NEC MOTOR CURRENT	WATTS LOSS	APPROX WT-LBS
KDRL46HC5	575/600	250	242	472	160

NEC MOTOR CURRENT(S) SHOWN ARE BASED ON HORSEPOWER(S) AT 575 VOLTS.



CUSTOMER IS RESPONSIBLE FOR INSTALLATION TO MEET ALL NATIONAL AND LOCAL ELECTRICAL CODES.

TOLERANCES (EXCEPT AS NOTED)				7878 N. 86th STREET MILWAUKEE, WI 53224 <b>KDR DRIVE REACTOR, ENCLOSED 600V HIGH Z, FRAME L</b>
DECIMAL				
.XX ± .03 .XXX ± .01				
FRACTIONAL ± 1/32				
ANGULAR ± 1/2°				DRN BY DSW DATE 02/13/12 DWG. NO. B SCALE TO FIT APRVD SHT. 1 OF 1
NO	REVISION	DATE	BY	