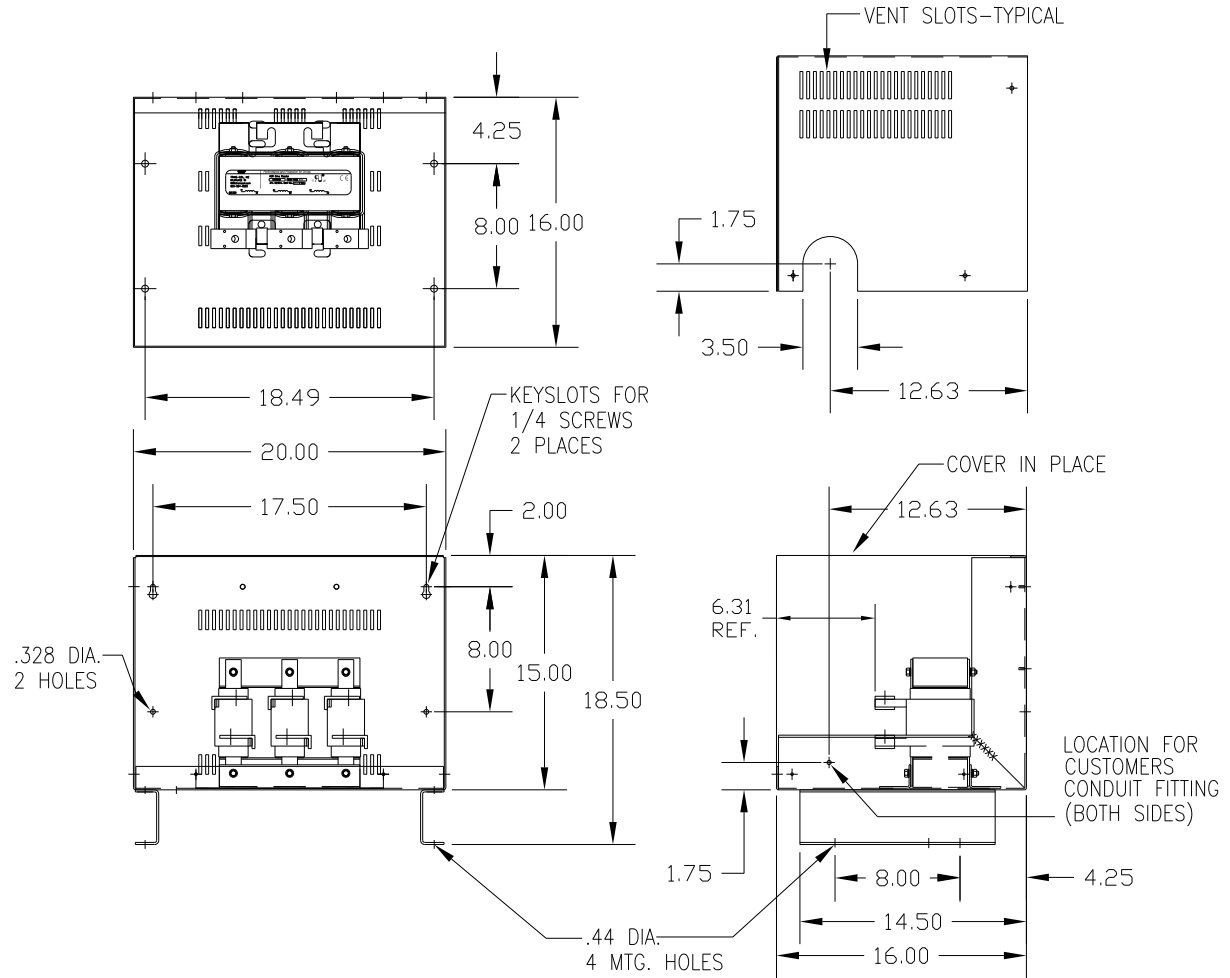
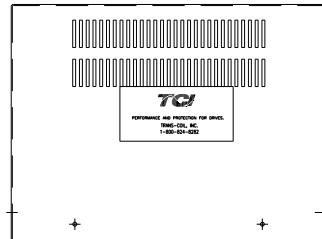
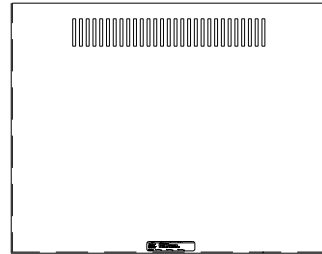


CATALOG NO	VOLTAGE	NEC MOTOR HP	NEC MOTOR CURRENT	APPROX WT-LBS	TERMINAL HOLE SIZE
KDRJ32PC5V	690	350	336	120	.56



CUSTOMER IS RESPONSIBLE FOR INSTALLATION TO MEET ALL NATIONAL AND LOCAL ELECTRICAL CODES.

TOLERANCES UNLESS NOTED:				TCI 7878 N. 86th STREET MILWAUKEE, WI 53224	
				OUTPUT REACTOR, ENCLOSED	
				690V, FRAME J	
				DRN BY: DSW	DATE: 2/20/12
				SCALE:	APRVD: B
NO	REVISION	DATE	BY	± 1/2"	DWG. NO: KDRJ32PC5VDG
					SHT. 1 OF 1