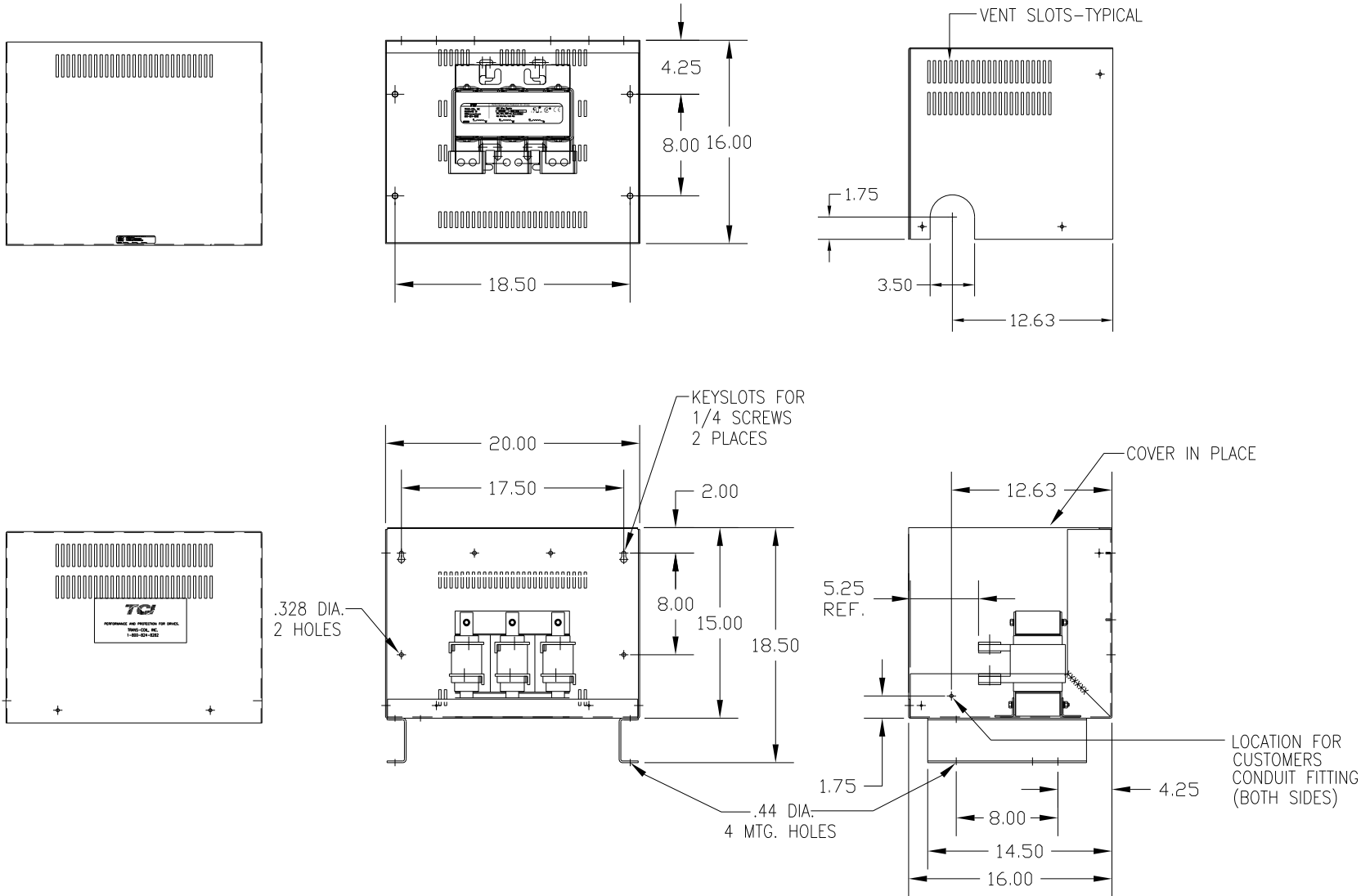



CATALOG NO	VOLTAGE	NEC MOTOR HP	NEC MOTOR CURRENT	WATTS LOSS	APPROX WT-LBS	TERMINAL HOLE SIZE
KDRJ32PC5	575	350	336	NOTE: 1	160	.56

NOTE 1: WATTS LOSS WILL VARY DUE TO FUNDAMENTAL FREQUENCY, CARRIER FREQUENCY AND OTHER SYSTEM CHARACTERISTICS.

KDR DRIVE REACTORS COMPLY WITH THE THERMAL AND ALTITUDE STANDARDS SET FORTH BY NEMA ST20-1992..



CUSTOMER IS RESPONSIBLE FOR INSTALLATION TO MEET ALL NATIONAL AND LOCAL ELECTRICAL CODES.

TOLERANCES (EXCEPT AS NOTED)				 7878 N. 86th STREET MILWAUKEE, WI 53224
DECIMAL				
				KDR OUTPUT REACTOR, ENCLOSED 575V FRAME J
				DRN BY DSW DATE 2/14/12 ENG. NO. B KDRJ32PC5DG SCALE APRVD. SHT. 1 OF 1
NO	REVISION	DATE	BY	