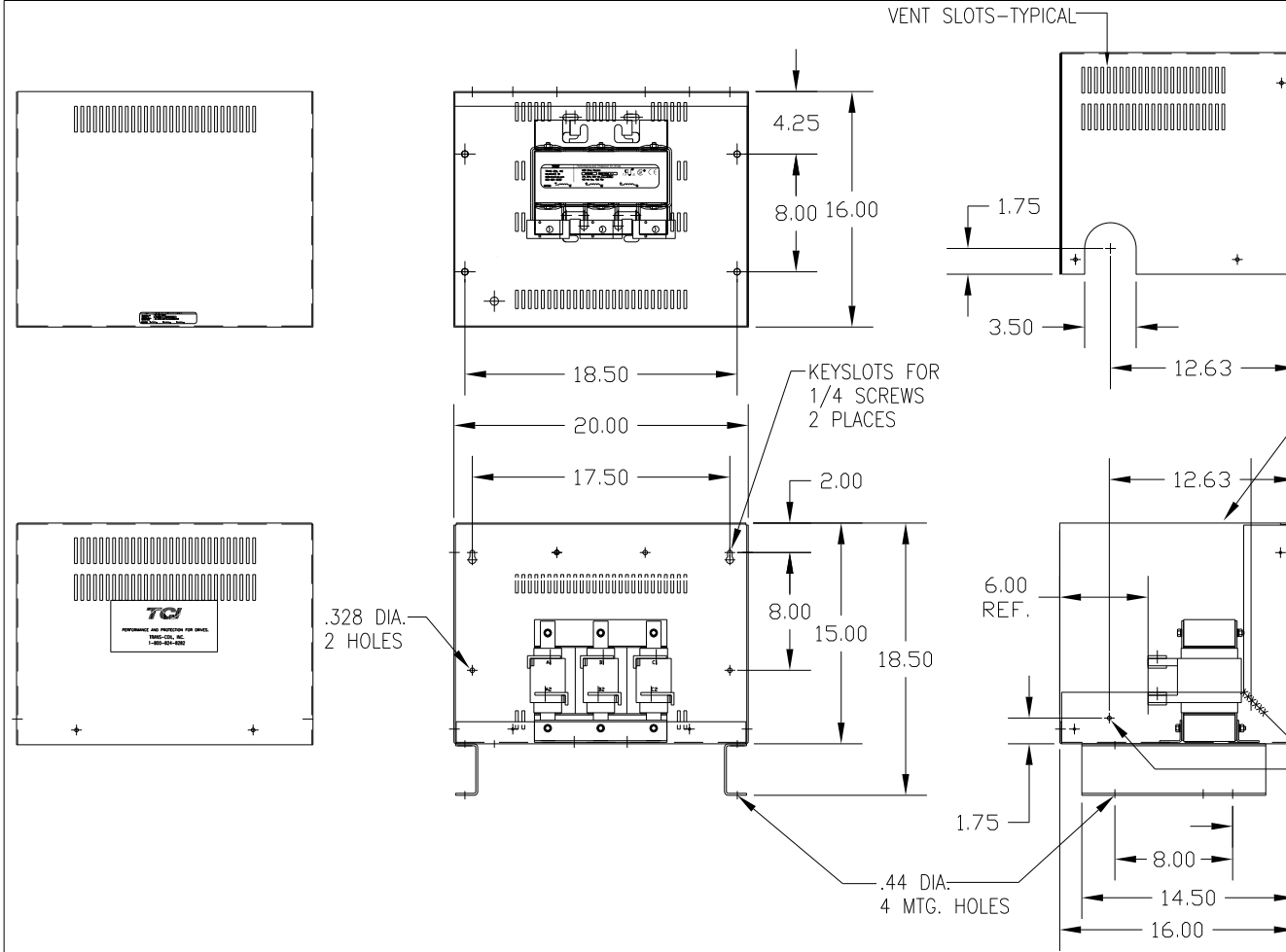


CATALOG NO	VOLTAGE	NEC MOTOR HP	NEC MOTOR CURRENT	WATTS LOSS	APPROX. WEIGHT-LBS	TERMINAL HOLE SIZE
KDRJ24LC5	208/240	200	528	442	120	.53 DIA

NEC MOTOR CURRENTS SHOWN IN THE 208/240 VOLT CHART ARE BASED ON HORSE POWERS AT 208 VOLT. 575/600 VOLT CHART USE THE 575 VOLT CURRENT RATING.



CUSTOMER IS RESPONSIBLE FOR INSTALLATION TO MEET ALL NATIONAL AND LOCAL ELECTRICAL CODES.

TOLERANCES (EXCEPT AS NOTED)				7878 N. 86th STREET MILWAUKEE, WI 53224	
DECIMAL	.XX ± .03	KDR DRIVE REACTOR, ENCLOSED 240V LOW Z, FRAME J			
FRACTIONAL	± 1/32				
ANGULAR	± 1/2°	DRN BY DSW	DATE 2/13/12	DWG. NO. B	KDRJ24LC5DG
NO	REVISION	DATE	BY	SCALE TO FIT	APRVD.
					SHT. 1 OF 1