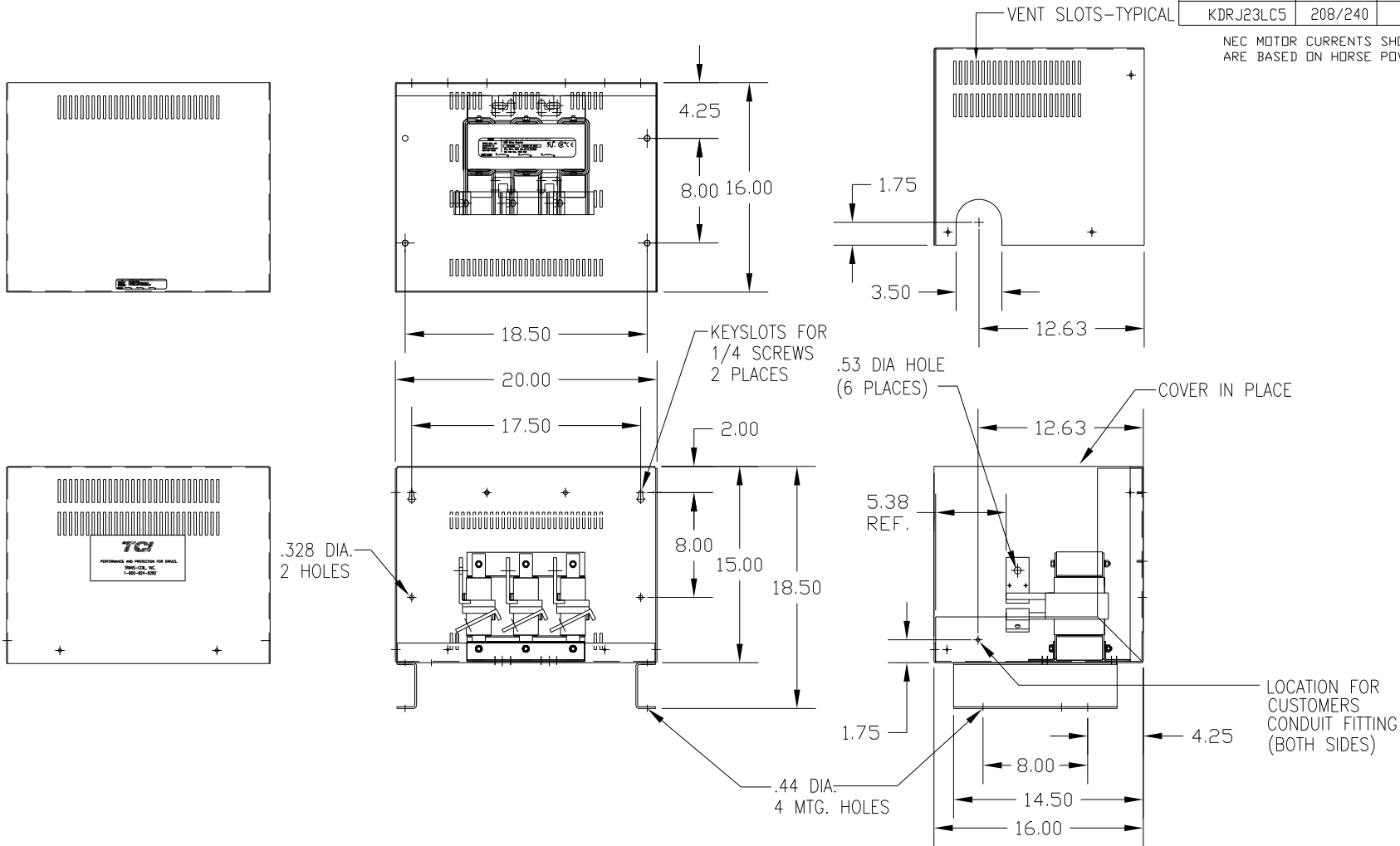



CATALOG NO	VOLTAGE	NEC MOTOR HP	NEC MOTOR CURRENT	WATTS LOSS	APPROX. WEIGHT-LBS
KDRJ23LC5	208/240	150	396	401	120

NEC MOTOR CURRENTS SHOWN IN THE 208/240 VOLT CHART ARE BASED ON HORSE POWERS AT 208 VOLT.



CUSTOMER IS RESPONSIBLE FOR INSTALLATION TO MEET ALL NATIONAL AND LOCAL ELECTRICAL CODES.

TOLERANCES (EXCEPT AS NOTED)				 <b>7878 N. 86th STREET MILWAUKEE, WI 53224</b>	
DECIMAL	.XX ±.03	<b>KDR DRIVE REACTOR, ENCLOSED 240V LOW Z, FRAME I</b>			
FRACTIONAL	.XXX ±.01				
ANGULAR	± 1/32				
NO	REVISION	DATE	BY	SCALE	DRN BY: DSW DATE: 02/13/12 APRVD: B DWG NO: KDRJ23LC5DG SHT. 1 OF 1