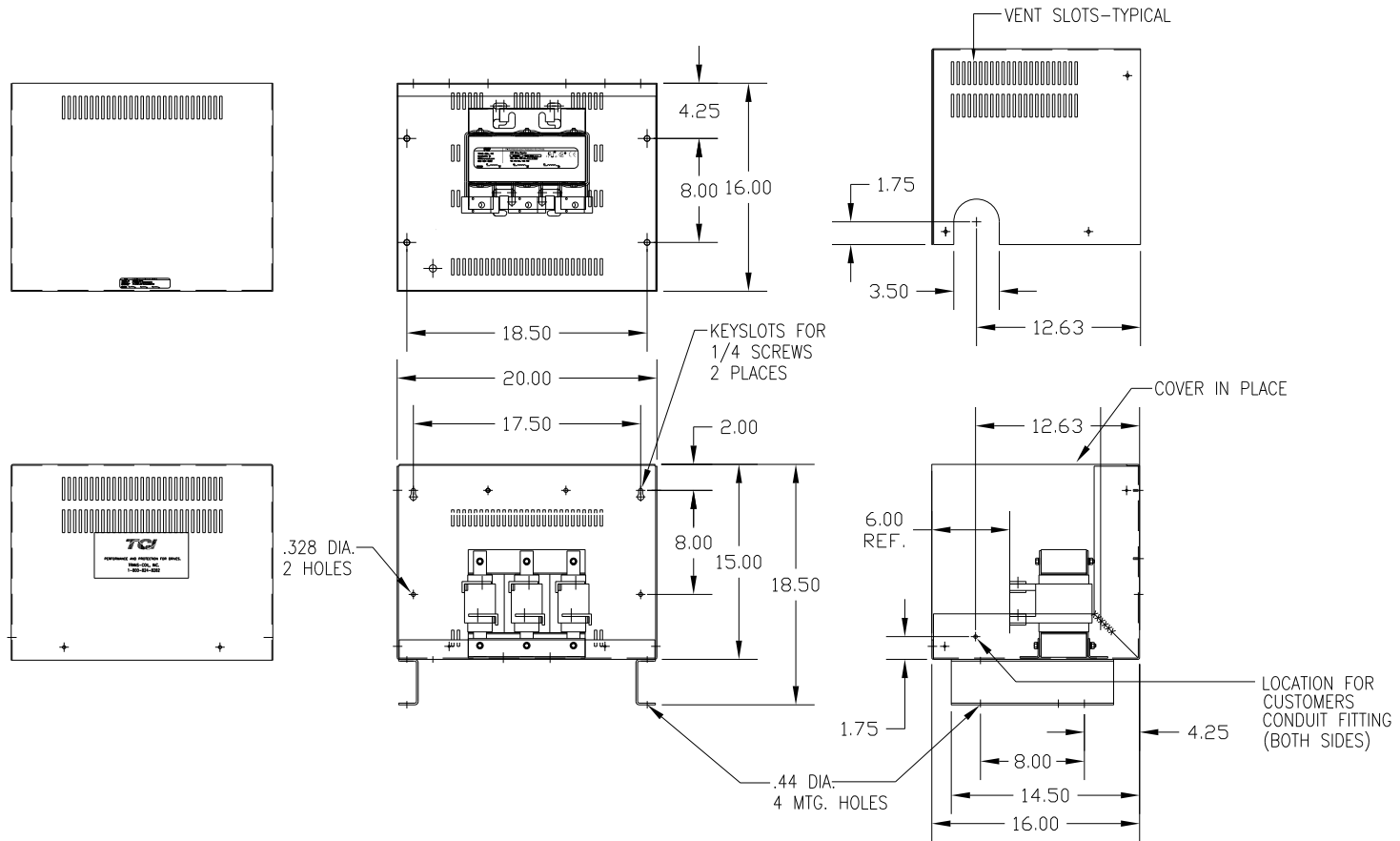


| CATALOG NO | VOLTAGE | NEC MOTOR HP | NEC MOTOR CURRENT | WATTS LOSS | APPROX. WEIGHT-LBS | TERMINAL HOLE SIZE |
|------------|---------|--------------|-------------------|------------|--------------------|--------------------|
| KDRJ22HC5 | 208/240 | 150 | 396 | 465 | 120 | .56 DIA |

NEC MOTOR CURRENTS SHOWN IN THE 208/240 VOLT CHART ARE BASED ON HORSE POWERS AT 208 VOLT. 575/600 VOLT CHART USE THE 575 VOLT CURRENT RATING.



CUSTOMER IS RESPONSIBLE FOR INSTALLATION TO MEET ALL NATIONAL AND LOCAL ELECTRICAL CODES.

| TOLERANCES (EXCEPT AS NOTED) | | | | TCI 7878 N. 86th STREET MILWAUKEE, WI 53224 | |
|------------------------------|----------|------|----|--|--------------|
| | | | | KDR DRIVE REACTOR, ENCLOSED 240V HIGH Z, FRAME J | |
| | | | | DRN. BY DSW | DATE 2/13/12 |
| | | | | SCALE TO FIT | APRVD. B |
| NO | REVISION | DATE | BY | DWG. NO. KDRJ22HC5DG | |
| | | | | SHT. 1 of 1 | |