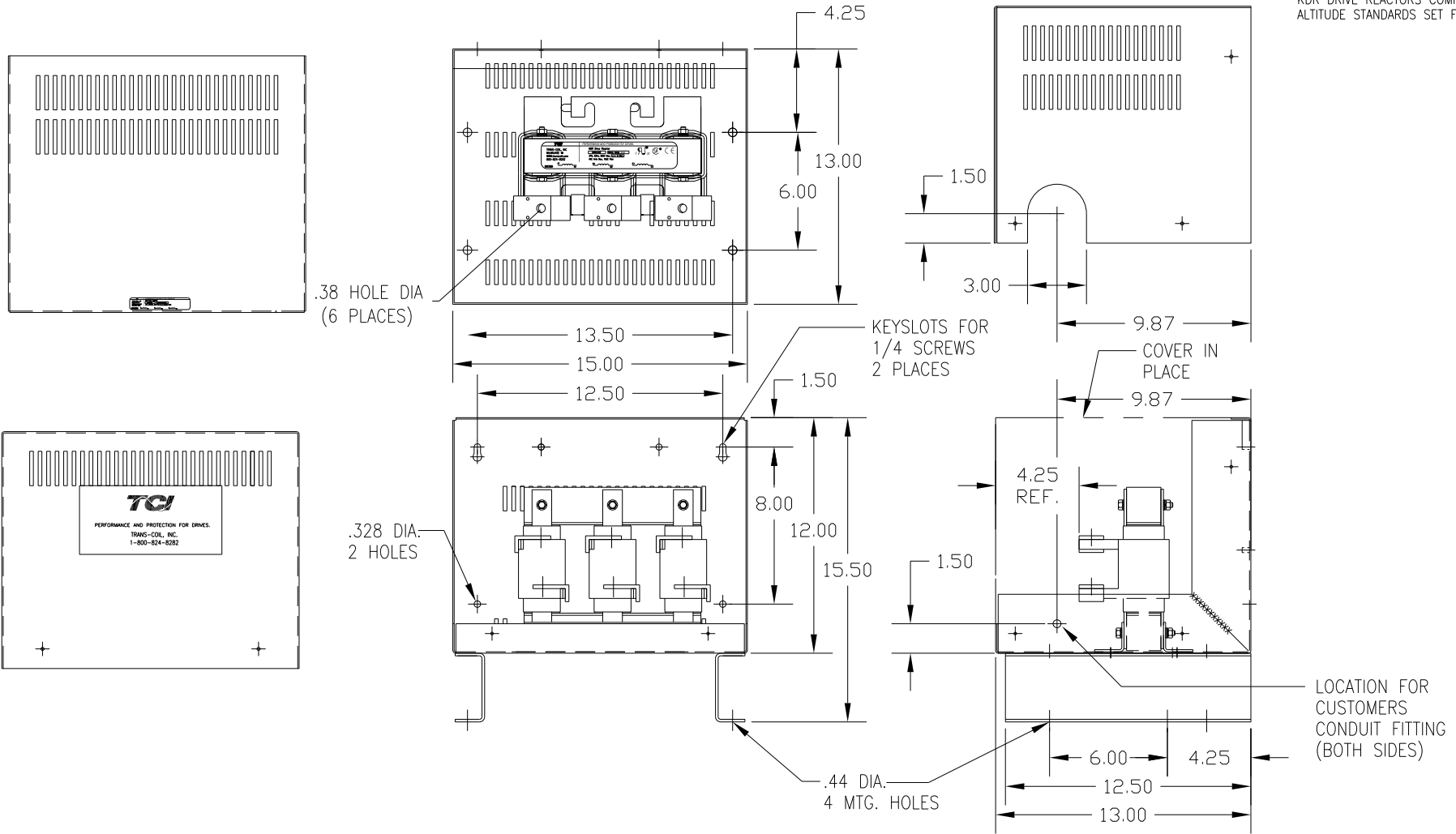



CATALOG NO	VOLTAGE	NEC MOTOR HP	NEC MOTOR CURRENT	WATTS LOSS	APPROX. WEIGHT-LBS
KDRI32PC4	575	200	192	NOTE 1:	80

NOTE 1: WATTS LOSS WILL VARY DUE TO FUNDAMENTAL FREQUENCY, CARRIER FREQUENCY AND OTHER SYSTEM CHARACTERISTICS.  
 KDR DRIVE REACTORS COMPLY WITH THE THERMAL AND ALTITUDE STANDARDS SET FORTH BY NEMA ST20-1992..



CUSTOMER IS RESPONSIBLE FOR INSTALLATION TO MEET ALL NATIONAL AND LOCAL ELECTRICAL CODES.

TOLERANCES (EXCEPT AS NOTED):				 7878 N. 86th STREET MILWAUKEE, WI 53224	
			DECIMAL	<b>KDR OUTPUT REACTOR</b> <b>575V, FRAME I</b>	
		.XX ± .03	FRACTIONAL		
		.XXX ± .01	± 1/32		
		ANGULAR	± 1/2°	DRN. BY: DSW SCALE:	DATE: 1/26/12 APPRVD:
NO	REVISION	DATE	BY	DWG. NO. B KDRI32PC4DG SHT. 1 OF 1	