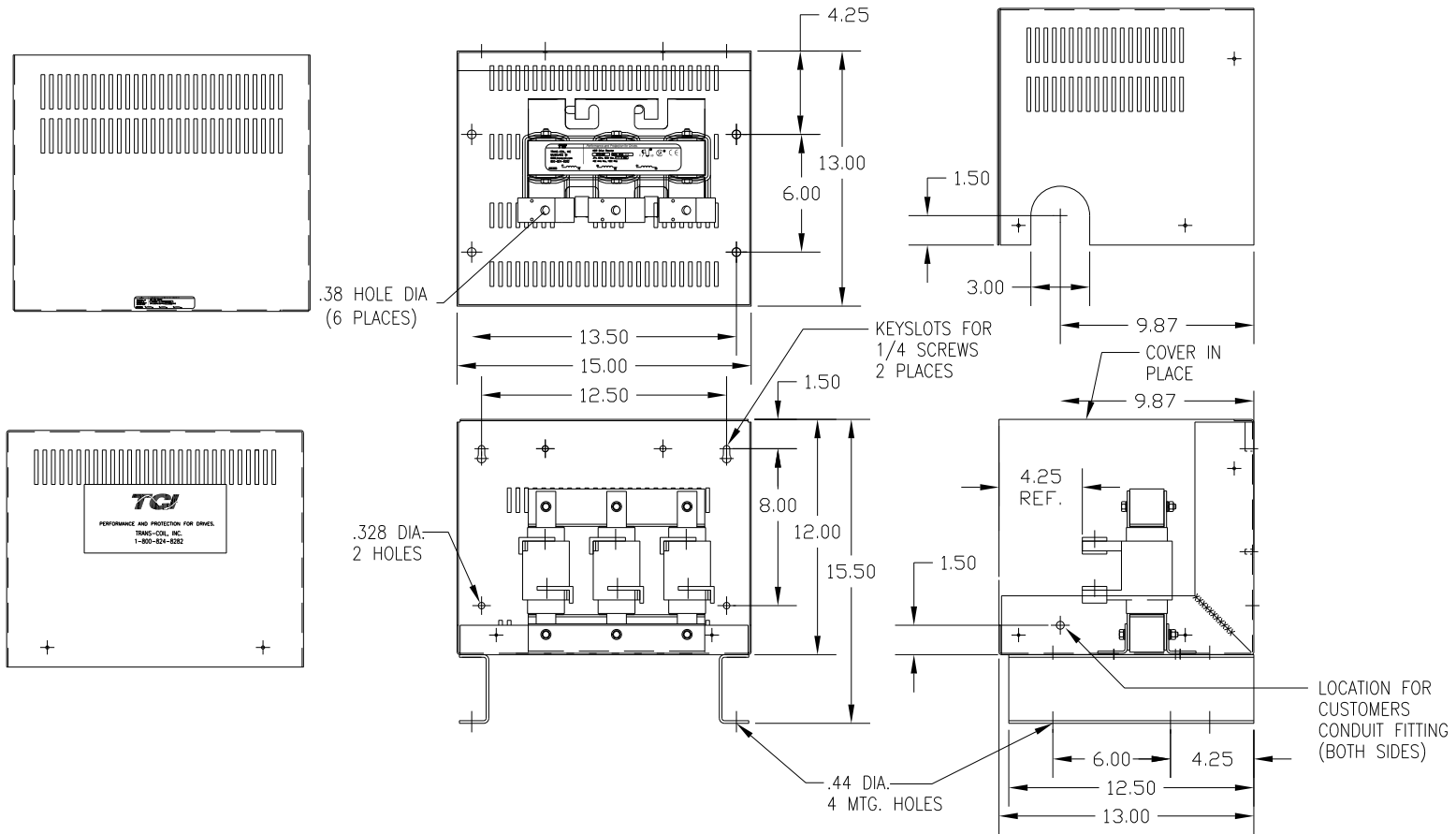



CATALOG NO	VOLTAGE	NEC MOTOR HP	NEC MOTOR CURRENT	WATTS LOSS	APPROX. WEIGHT-LBS
KDR122HC4	208/240	75	211	312	85

NEC MOTOR CURRENTS SHOWN IN THE 208/240 VOLT CHART ARE BASED ON HORSE POWERS AT 208 VOLT.



CUSTOMER IS RESPONSIBLE FOR INSTALLATION TO MEET ALL NATIONAL AND LOCAL ELECTRICAL CODES.

TOLERANCES (EXCEPT AS NOTED)				 7878 N. 86th STREET MILWAUKEE, WI 53224	
				KDR DRIVE REACTOR	
				240V LOW Z, FRAME I	
				DRN. BY: DSW	DATE: 1/26/12
				SCALE:	APRVD:
NO	REVISION	DATE	BY	DWG. NO. B KDR122HC4DG	
				SHT. 1 of 1	