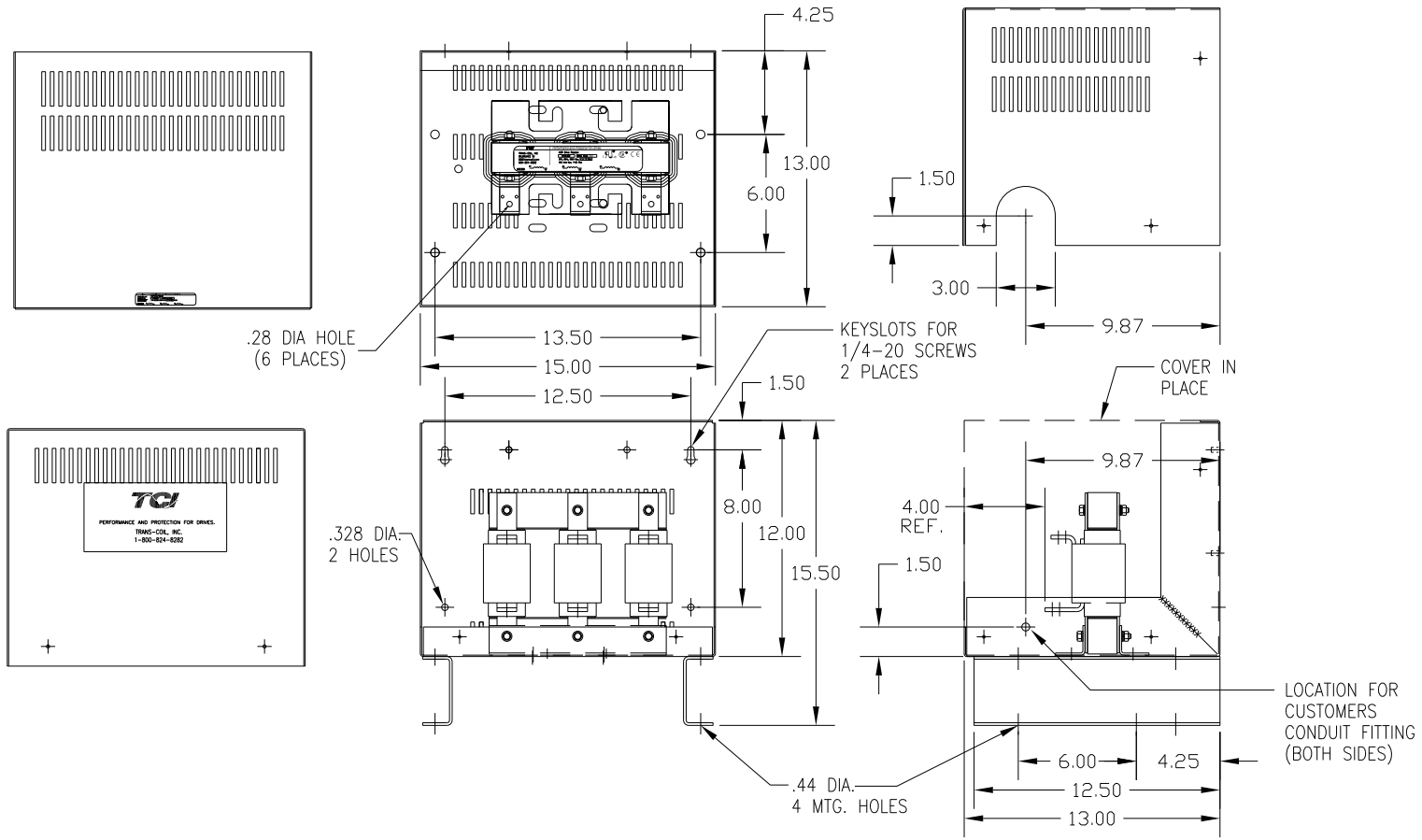


| CATALOG NO | VOLTAGE | NEC MOTOR HP | NEC MOTOR CURRENT | WATTS LOSS | APPROX WT-LBS |
|------------|---------|--------------|-------------------|------------|---------------|
| KDRH22LC4 | 208/240 | 60 | 169 | 209 | 85 |

NEC MOTOR CURRENTS SHOWN IN THE 208/240 VOLT CHART ARE BASED ON HORSE POWERS AT 208 VOLT. 575/600 VOLT CHART USE THE 575 VOLT CURRENT RATING.



CUSTOMER IS RESPONSIBLE FOR INSTALLATION TO MEET ALL NATIONAL AND LOCAL ELECTRICAL CODES.

| NO | REVISION | DATE | BY | TOLERANCES (EXCEPT AS NOTED) | DECIMAL | FRACTIONAL | ANGULAR | SCALE | DATE | APRVD. | DWG. NO. | SHT. |
|----|----------|------|----|------------------------------|---------|------------|---------|-------|------|---------|----------|------|
| | | | | .XX ± .03 | | .XXX ± .01 | ± 1/32 | | DSW | 2/13/12 | B | 1 |
| | | | | ± 1/2° | | | | | | | | |

TOLERANCES (EXCEPT AS NOTED)
 DECIMAL: .XX ± .03, .XXX ± .01
 FRACTIONAL: ± 1/32
 ANGULAR: ± 1/2°

7878 N. 86th STREET MILWAUKEE, WI 53224
KDR DRIVE REACTOR, ENCLOSED 240V LOW Z, FRAME H
 DRN BY: DSW DATE: 2/13/12 DWG. NO.: B KDRH22LC4DG
 SCALE: AFRVD. SHT. 1 OF 1