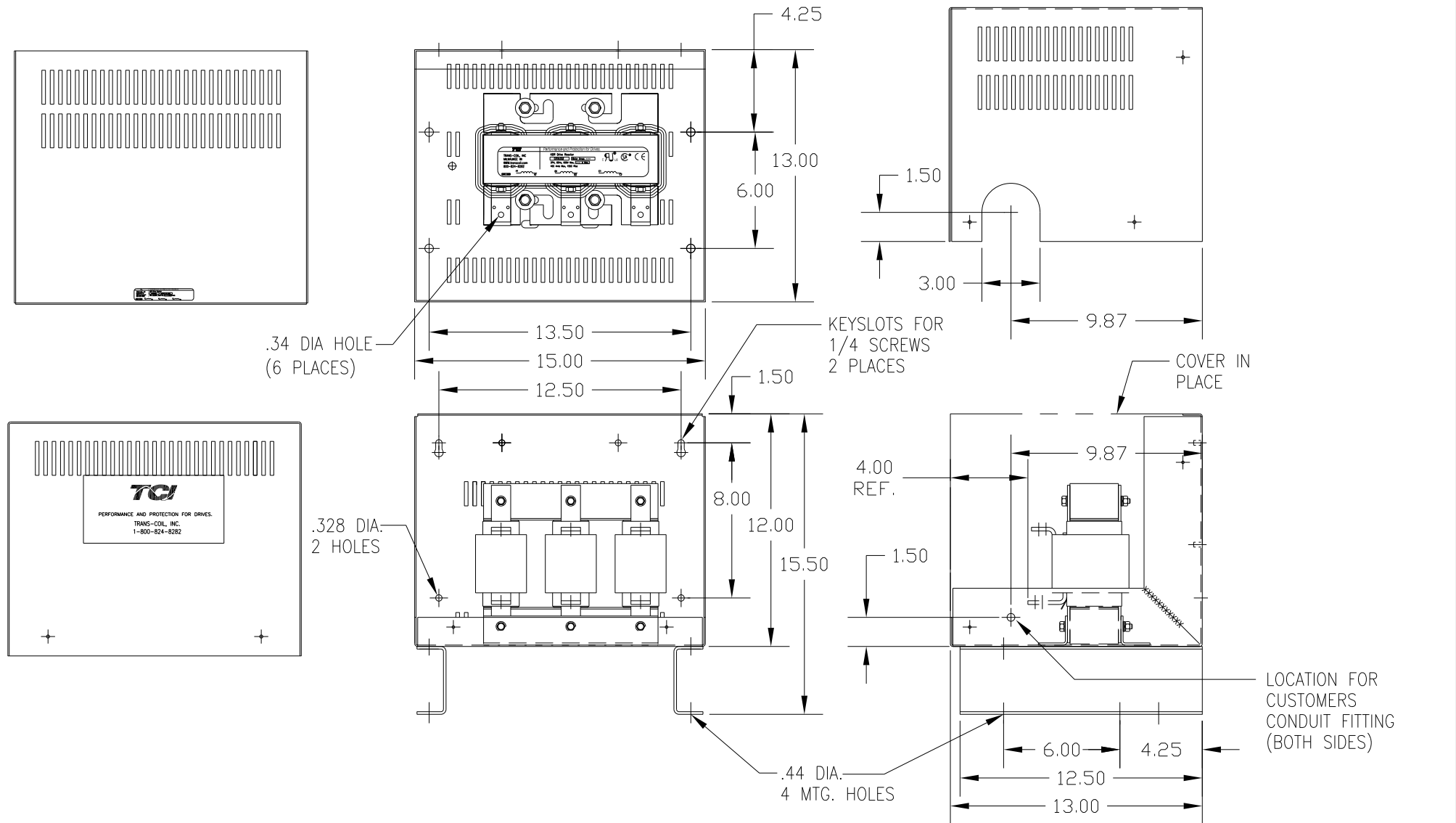


CATALOG NO	VOLTAGE	NEC MOTOR HP	NEC MOTOR CURRENT	WATTS LOSS	APPROX. WEIGHT-LBS
KDRG22LC4	208/240	125	343	370	105

NEC MOTOR CURRENTS SHOWN IN THE 208/240 VOLT CHART ARE BASED ON HORSE POWERS AT 208 VOLT. 575/600 VOLT CHART USE THE 575 VOLT CURRENT RATING.



CUSTOMER IS RESPONSIBLE FOR INSTALLATION TO MEET ALL NATIONAL AND LOCAL ELECTRICAL CODES.

				TOLERANCES (EXCEPT AS NOTED):		7878 N. 86th STREET MILWAUKEE, WI 53224	
				DECIMAL			
				.XX ± .03		<b>KDR DRIVE REACTOR</b> <b>240V LOW Z, FRAME G</b>	
				.XXX ± .01			
				FRACTIONAL		DRN BY: DSW DATE: 1/26/12 DVG. NO: B	
				± 1/32		KDRG22LC4DG	
				ANGULAR		SCALE: APRVD:	
				± 1/2°		SHT. 1 OF 1	
NO	REVISION	DATE	BY				