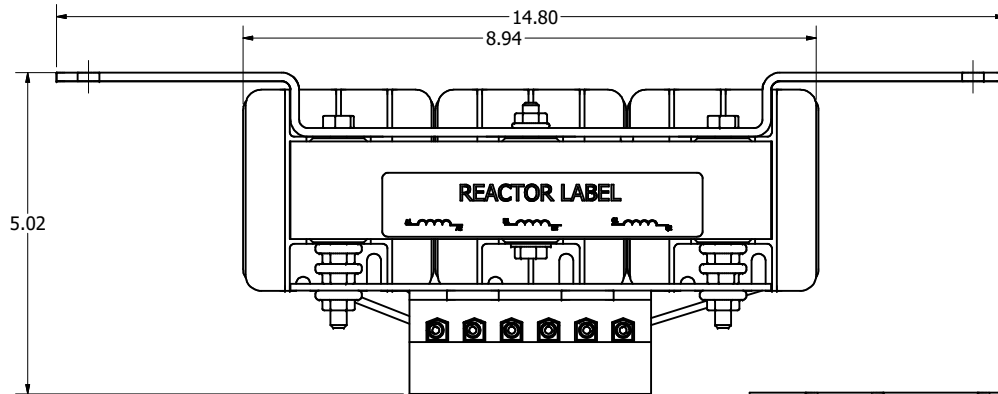
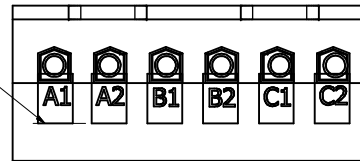


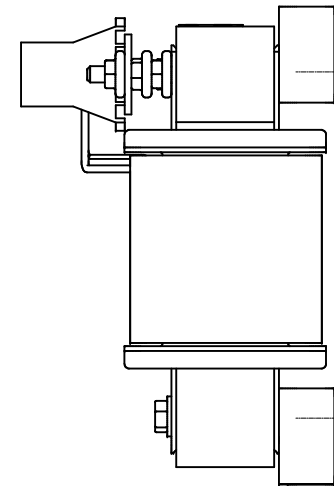
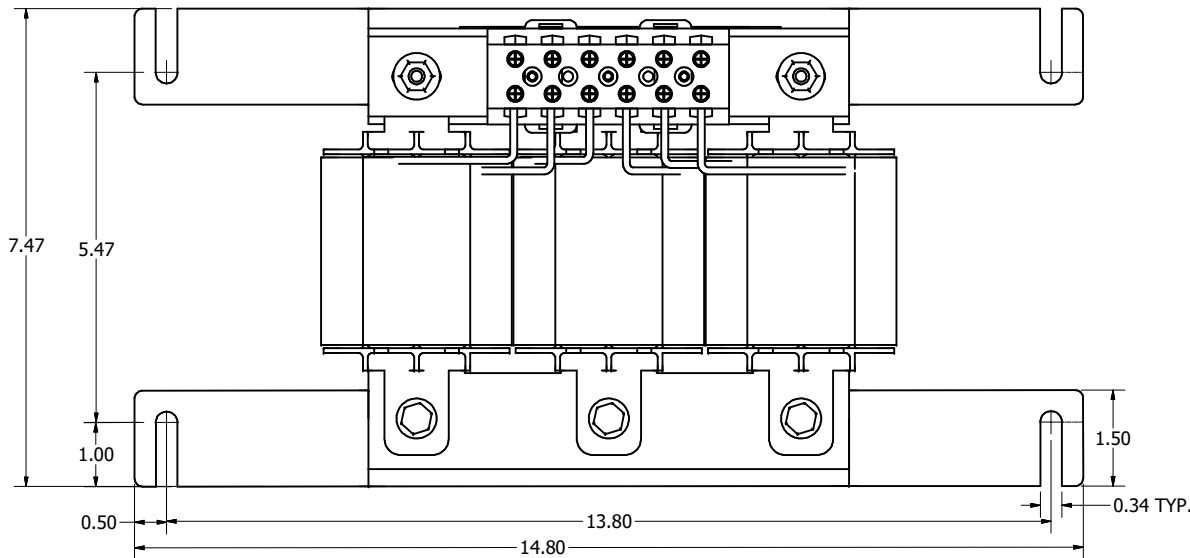
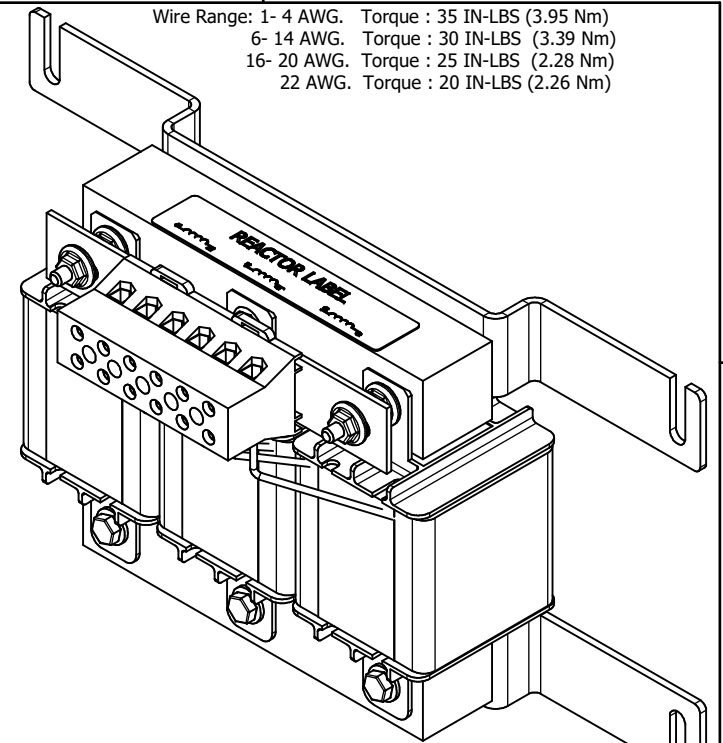
TCI Part Number	Horsepower (HP)	Motor Amps (A)	Maximum Amps (A)	Approx Weight (LBS)
KDRF4HX1	40	52	60	25



(Customer Connections)
Markings On Terminal Block
For Reference Only.




Wire Range: 1- 4 AWG. Torque : 35 IN-LBS (3.95 Nm)
6- 14 AWG. Torque : 30 IN-LBS (3.39 Nm)
16- 20 AWG. Torque : 25 IN-LBS (2.28 Nm)
22 AWG. Torque : 20 IN-LBS (2.26 Nm)



Customer Is Responsible For Installation to
Meet All National And Local Electrical Codes.

Material(s) Shall be RoHS Compliant

THE INFORMATION AND DESIGNS CONTAINED IN THIS DRAWING ARE CONFIDENTIAL AND THE PROPRIETARY PROPERTY OF ALLIED MOTION TECHNOLOGIES INC. AND ITS SUBSIDIARIES. NEITHER THIS DESIGN NOR ANY INFORMATION CONTAINED IN THIS DRAWING MAY BE REPRODUCED OR DISCLOSED TO OTHERS WITHOUT THE EXPRESS WRITTEN CONSENT OF ALLIED MOTION TECHNOLOGIES INC. AND ITS SUBSIDIARIES.				TOLERANCES (EXCEPT AS NOTED)		 An Allied Motion Company KDR, Wall Mounted, 480V, 40HP, 60A 3 Phase, Input Line Indicator, High Impedance		W132N10611 (Rev 19-Feb-2022) Germantown, WI 53022 © 2023 TCI, LLC						
				DECIMAL										
				FRACTIONAL										
				ANGULAR										
B	6233, Double nut Brace	5/19/2023	DSW	NO	REVISION	DATE	BY	SCALE	1/2	DATE	9/17/18	107872	SHT 1 OF 1	