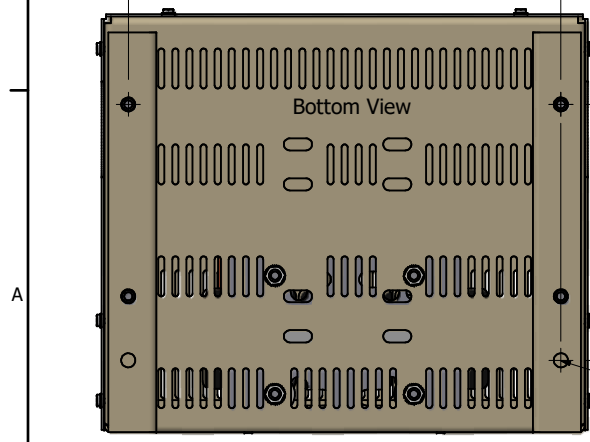
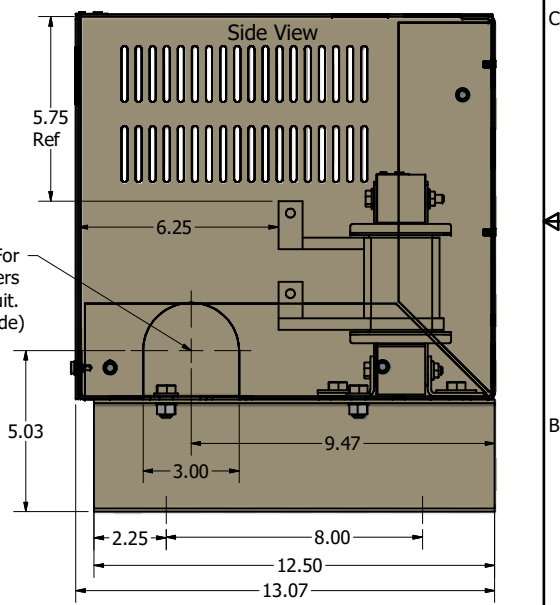
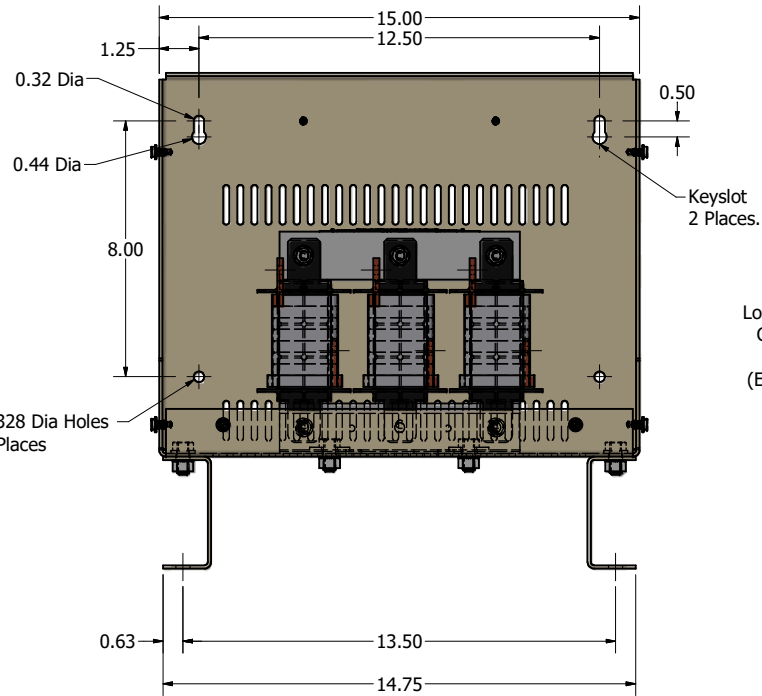
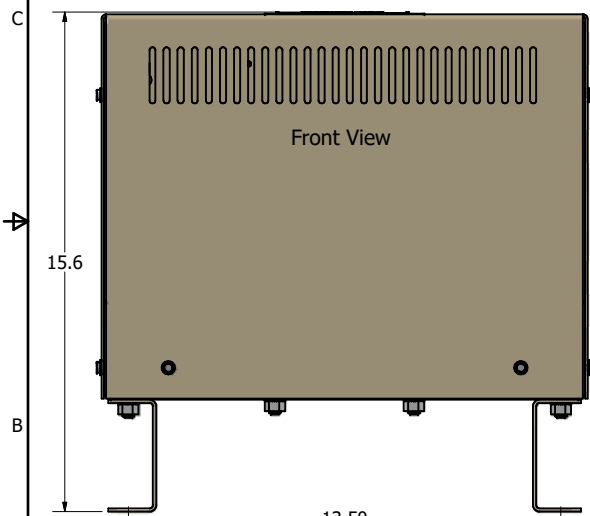


690 Rated Voltage, 690 Max Voltage, Low Z, Impedance.

Part Number	Horsepower (HP)	Motor Amps (A)	Maximum Amps (A)	Inductance (uH)	Weight (LBS)	Terminal Hole Size (Inches)	Losses (W)
KDRF45LC4V	100	99	99	272	65	0.28	194




Customer Is Responsible For Installation To Meet All National And Local Electrical Codes.

Material(s) Shall be RoHS Compliant

THE INFORMATION AND DESIGNS CONTAINED IN THIS DRAWING ARE CONFIDENTIAL AND THE PROPRIETARY PROPERTY OF ALLIED MOTION TECHNOLOGIES INC. AND ITS SUBSIDIARIES. NEITHER THIS DESIGN NOR ANY INFORMATION CONTAINED IN THIS DRAWING MAY BE REPRODUCED OR DISCLOSED TO OTHERS WITHOUT THE EXPRESS WRITTEN CONSENT OF ALLIED MOTION TECHNOLOGIES INC. AND ITS SUBSIDIARIES.

NO	REVISION	DATE	BY	TOLERANCES (EXCEPT AS NOTED)
				DECIMAL
				.XX ± .25
				.XXX ± .10
				FRACTIONAL
				± 1/32
				ANGULAR
				± 1°


 W132N10611 (Frame 13F) © 2024 TCI, LLC
 An Official Motors Company
 KDR (F Frame) Enclosed, 690V
 KDRF45LC4V
 DWN BY: DSW DATE: 03/27/2007 103150DG
 SCALE: 1/3 DRAWN BY: CS
 SHEET 1 OF 1