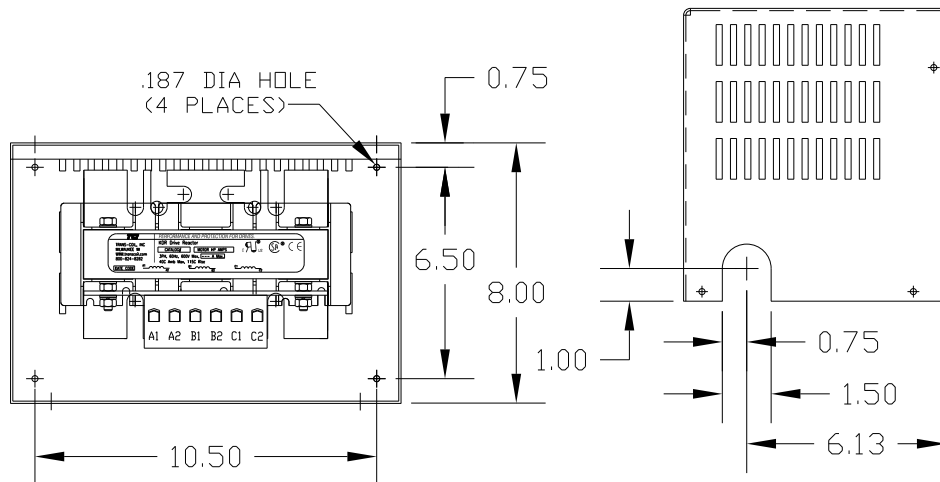
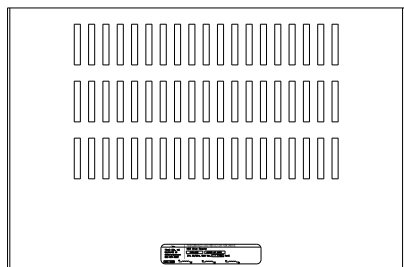


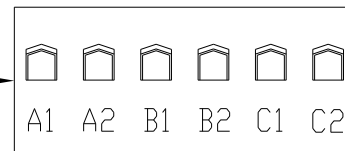
CATALOG NO	VOLTAGE	NEC MOTOR HP	NEC MOTOR CURRENT	WATTS LOSS	APPROX WT-LBS
KDRF45HC3	575/ 600	50	52	166	42

NOTE: NEC MOTOR CURRENT SHOWN ARE BASED ON HORSEPOWER AT 575 VOLTS.

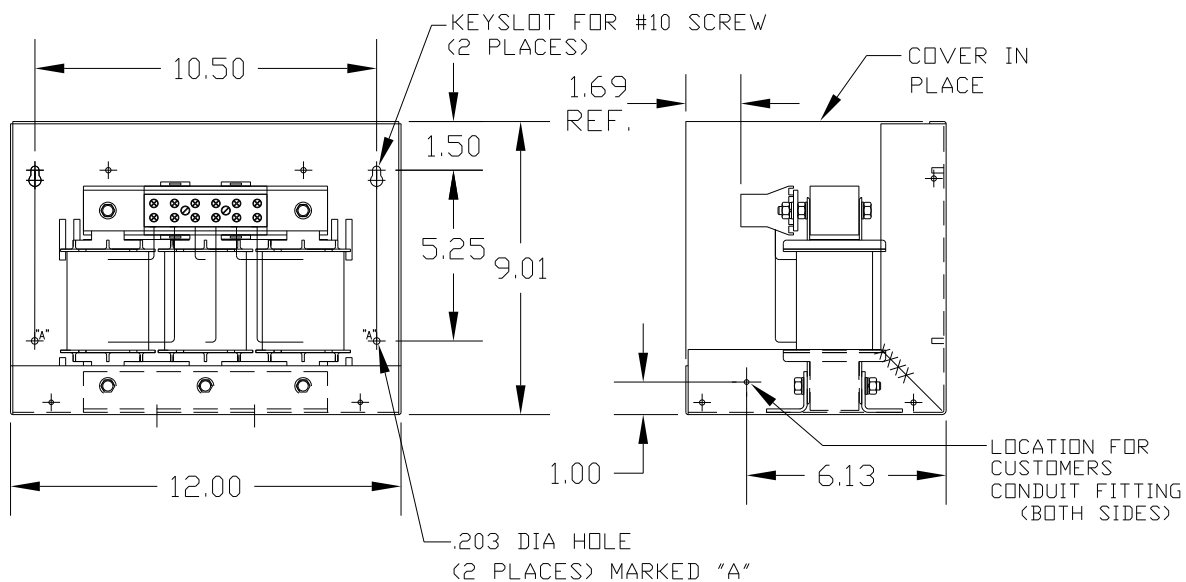
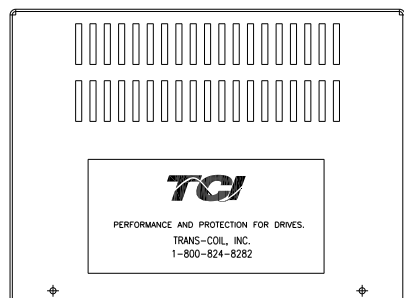


NOTE: TORQUE (LB-IN) = CUSTOMER WIRE SIZE

35 = # 1 AWG THRU # 4 AWG  
 30 = # 6 AWG THRU #14 AWG  
 25 = #16 AWG THRU #20 AWG  
 20 = #22 AWG



NOTE: A1, A2, B1, B2, C1, C2, MARKINGS ON TERMINAL BLOCK FOR REFERENCE ONLY.



CUSTOMER IS RESPONSIBLE FOR INSTALLATION TO MEET ALL NATIONAL AND LOCAL ELECTRICAL CODES.

NO	REVISION	DATE	BY	TOLERANCES (EXCEPT AS NOTED)	 7878 N. 86th STREET MILWAUKEE, WI 53224 <b>KDR DRIVE REACTOR</b> <b>600V HIGH Z, FRAME F, ENCLOSED</b> DWN BY: DSW DATE: 02/10/12 DWG NO: B KDRF45HC3DG SCALE: TO FIT APPRVD: BY: SHT. 1 OF 1
				DECIMAL	
				.XX ± .03	
				.XXX ± .01	
				FRACTIONAL ± 1/32	
				ANGULAR ± 1/2°	