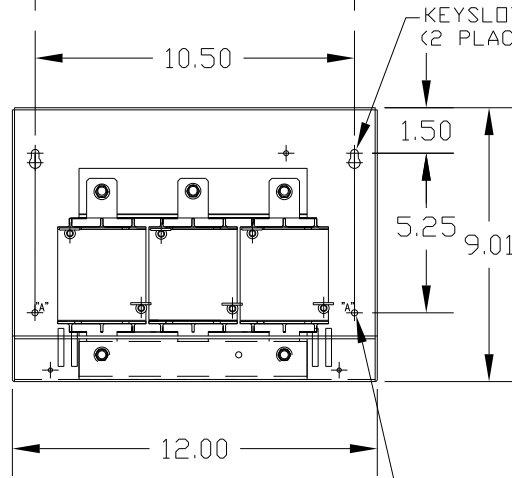
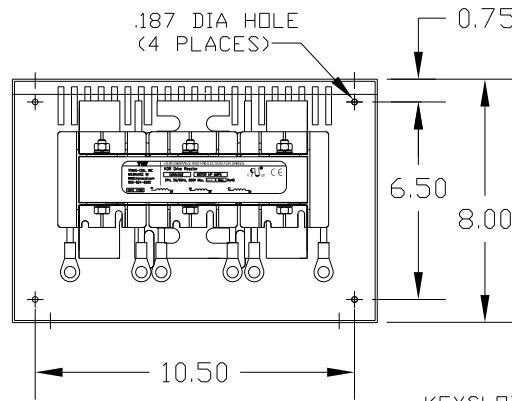
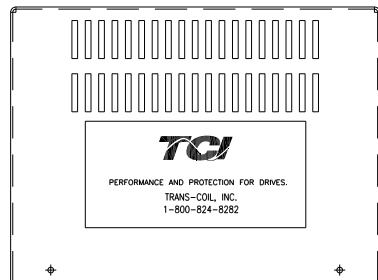
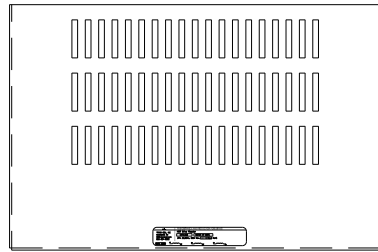
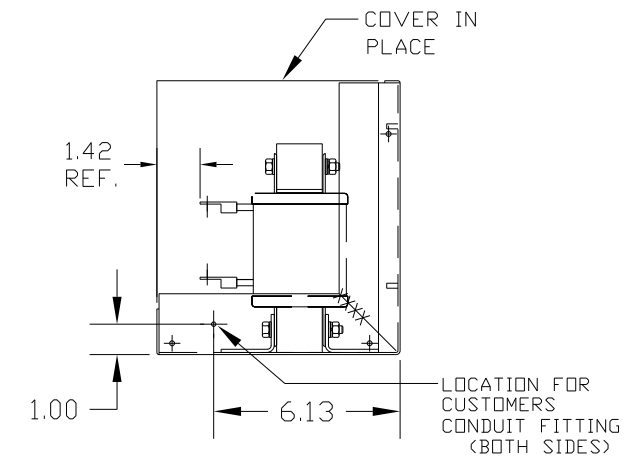
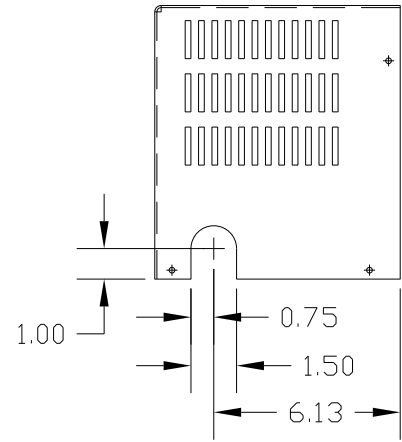


| CATALOG NO | VOLTAGE | NEC MOTOR HP | NEC MOTOR CURRENT | APPROX WT-LBS | TERMINAL HOLE SIZE |
|------------|---------|--------------|-------------------|---------------|--------------------|
| KDRF32PC3V | 690 | 75 | 77 | 37 | .375 |



.203 DIA HOLE (2 PLACES) MARKED "A"



CUSTOMER IS RESPONSIBLE FOR INSTALLATION TO MEET ALL NATIONAL AND LOCAL ELECTRICAL CODES.

| | | | | TOLERANCES (EXCEPT AS NOTED) | | 7878 N. 86th STREET MILWAUKEE, WI 53224 | |
|----|----------|------|----|------------------------------|--|--|--|
| | | | | DECIMAL | | OUTPUT REACTOR, ENCLOSED 690V, FRAME F | |
| | | | | .XX ± .03 .XXX ± .01 | | | |
| | | | | FRACTIONAL | | DRN BY DSW DATE 2/20/12 DWG. NO B KDRF32PC3VDG | |
| | | | | ± 1/32 | | SCALE APRVD. | |
| | | | | ANGULAR | | SHT. 1 OF 1 | |
| NO | REVISION | DATE | BY | ± 1/2" | | | |