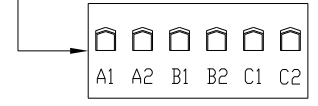
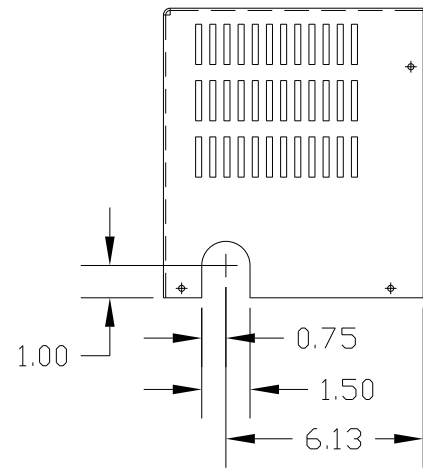
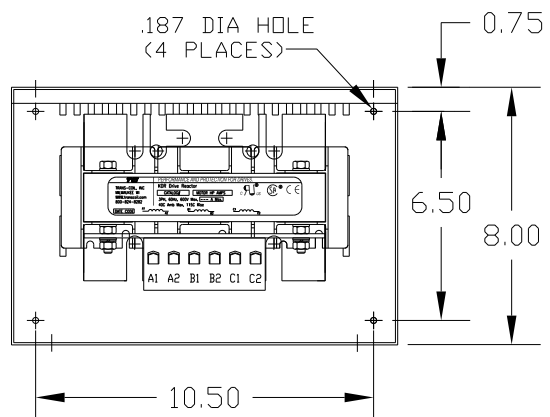
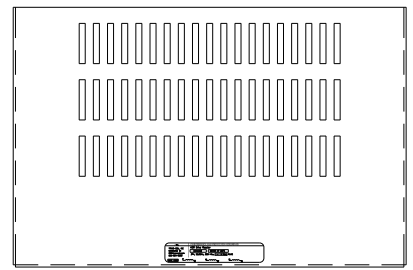


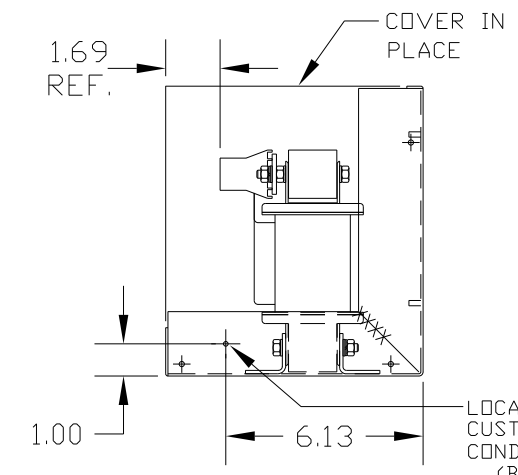
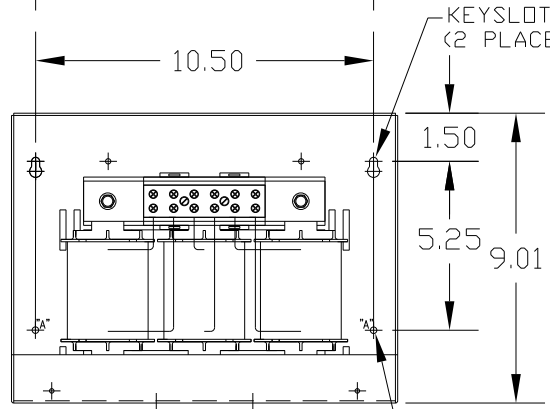
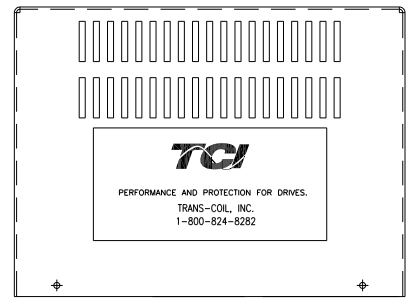
CATALOG NO	VOLTAGE	NEC MOTOR HP	NEC MOTOR CURRENT	WATTS LOSS	APPROX WT-LBS	TORQUE (LB-IN)
KDRF31PC3	575	60	62	SEE NOTE: 1	37	SEE NOTE: 2

NOTE 1: WATTS LOSS WILL VARY DUE TO FUNDAMENTAL FREQUENCY, CARRIER FREQUENCY AND OTHER SYSTEM CHARACTERISTICS.
 KDR DRIVE REACTORS COMPLY WITH THE THERMAL AND ALTITUDE STANDARDS SET FORTH BY NEMA ST20-1992..



NOTE 2 TORQUE (LB-IN) = CUSTOMER WIRE SIZE
 35 = # 1 AWG THRU # 4 AWG
 30 = # 6 AWG THRU #14 AWG
 25 = #16 AWG THRU #20 AWG
 20 = #22 AWG



NOTE: A1, A2, B1, B2, C1, C2, MARKINGS ON TERMINAL BLOCK FOR REFERENCE ONLY.



CUSTOMER IS RESPONSIBLE FOR INSTALLATION TO MEET ALL NATIONAL AND LOCAL ELECTRICAL CODES.

TOLERANCES (EXCEPT AS NOTED)				 7878 N. 86th STREET MILWAUKEE, WI 53224
NO	REVISION	DATE	BY	
				DECIMAL
				.XX ± .03
				.XXX ± .01
				FRACTIONAL ± 1/32
				ANGULAR ± 1/2°
				 KDR OUTPUT REACTOR 575V, FRAME F
				DRN BY: DSW DATE: 1/25/12 DWG. NO.: KDRF31PC3DG SCALE: APPRVD: B
				SHT. 1 OF 1