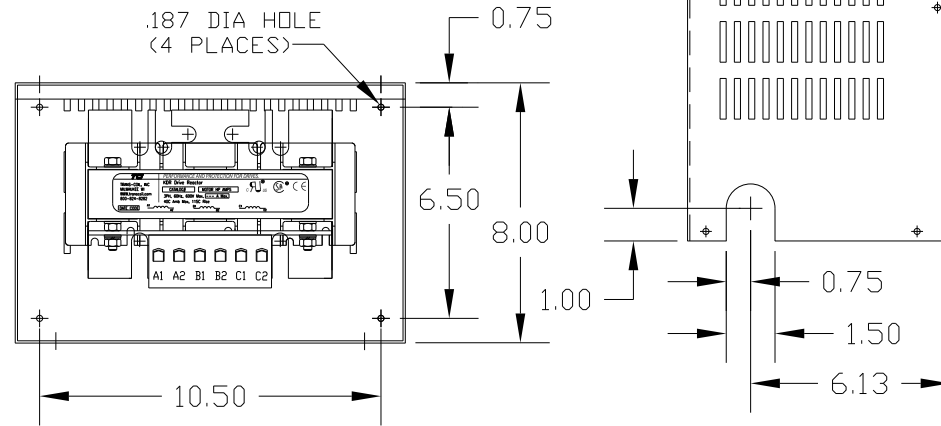
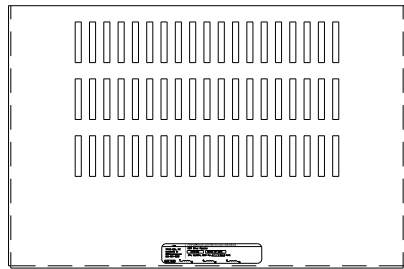
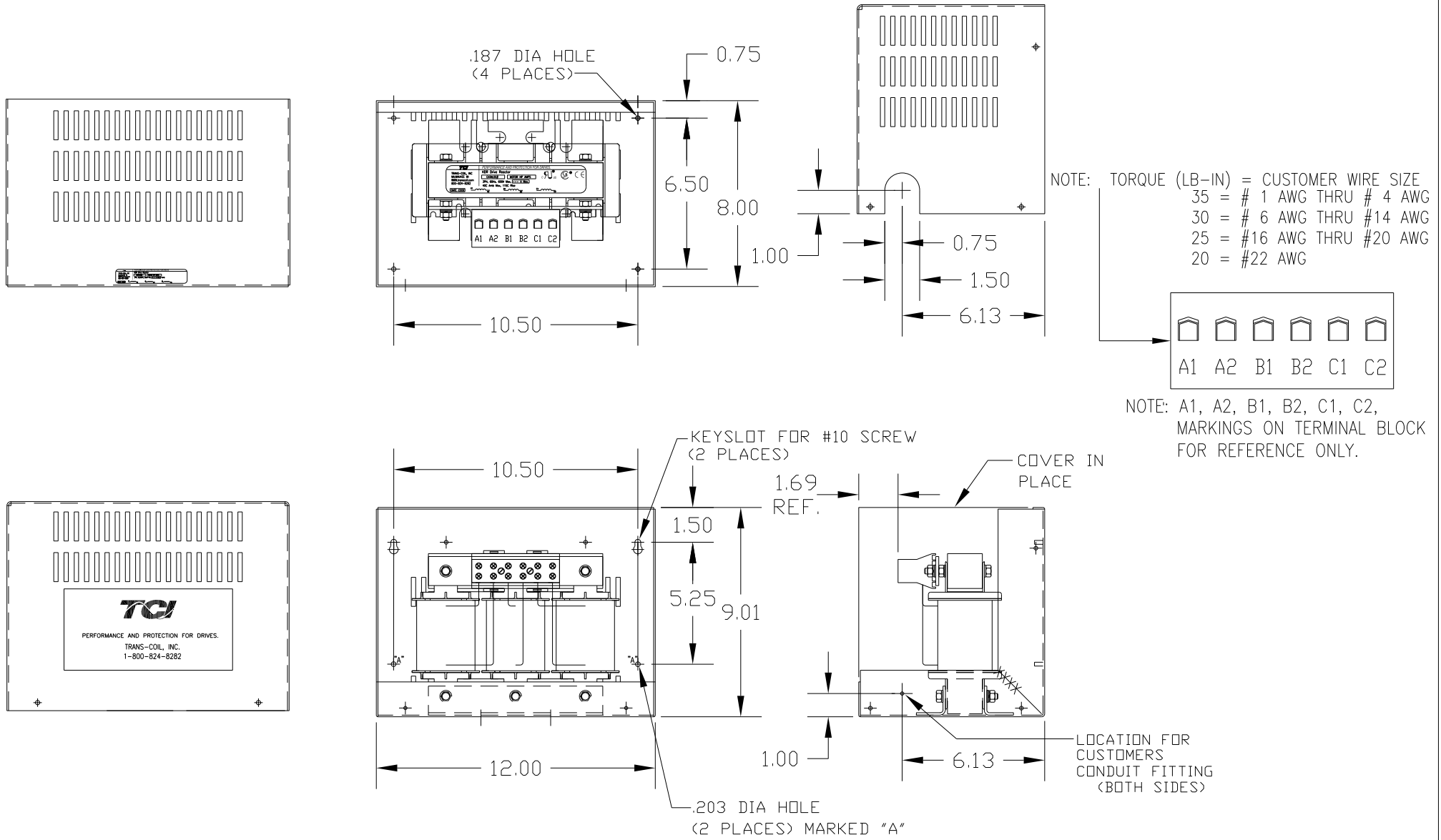
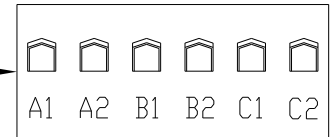


CATALOG NO	VOLTAGE	NEC MOTOR HP	NEC MOTOR CURRENT	WATTS LOSS	APPROX WT-LBS
KDRF28HC3	208/240	25	74.8	151	42

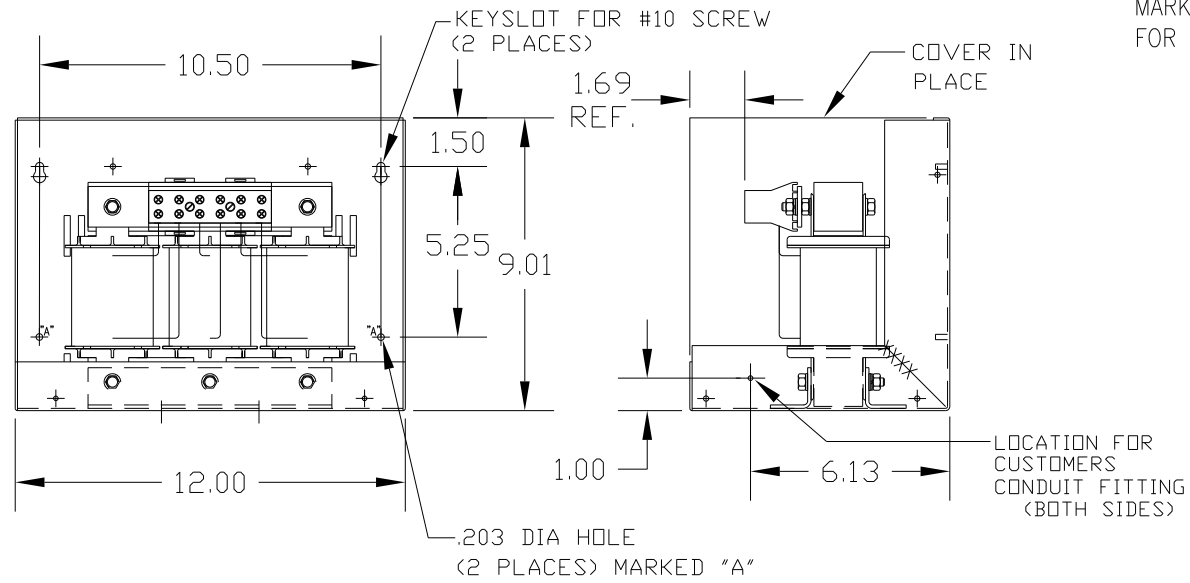
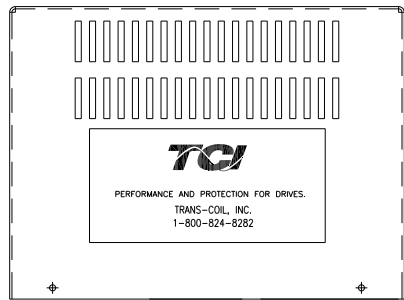
NOTE: NEC MOTOR CURRENT SHOWN ARE BASED ON HORSEPOWER AT 208 VOLTS.



NOTE: TORQUE (LB-IN) = CUSTOMER WIRE SIZE  
 35 = # 1 AWG THRU # 4 AWG  
 30 = # 6 AWG THRU #14 AWG  
 25 = #16 AWG THRU #20 AWG  
 20 = #22 AWG



NOTE: A1, A2, B1, B2, C1, C2, MARKINGS ON TERMINAL BLOCK FOR REFERENCE ONLY.



LOCATION FOR CUSTOMERS CONDUIT FITTING (BOTH SIDES)

CUSTOMER IS RESPONSIBLE FOR INSTALLATION TO MEET ALL NATIONAL AND LOCAL ELECTRICAL CODES.

TOLERANCES (EXCEPT AS NOTED)				7878 N. 86th STREET MILWAUKEE, WI 53224	
DECIMAL				KDR DRIVE REACTOR	
.XX ±.03				240V HIGH Z, FRAME F, ENCLOSED	
.XXX±.01				DRN. BY DSW	DATE 2/10/12
FRACTIONAL				SCALE TO FIT	APRVD. B
± 1/32					DWG. NO. KDRF28HC3DG
ANGULAR					SHT. 1 OF 1
± 1/2°					
NO	REVISION	DATE	BY		