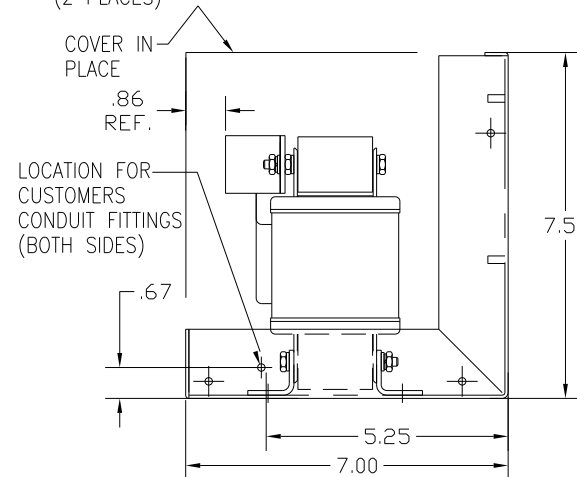
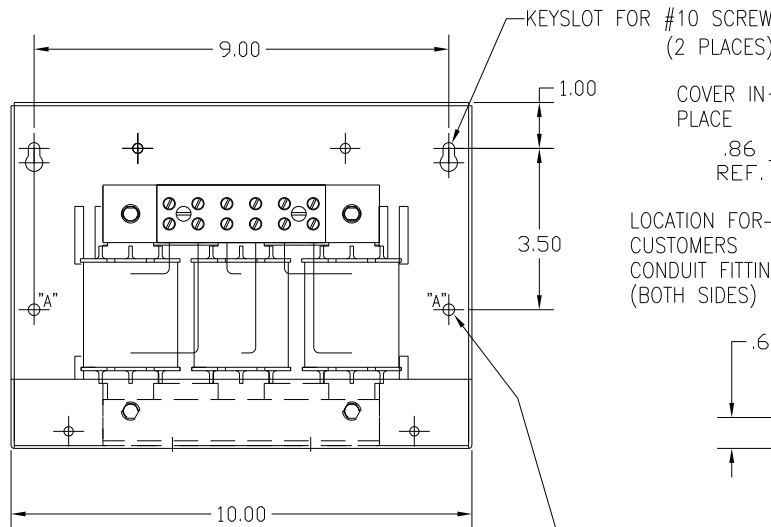
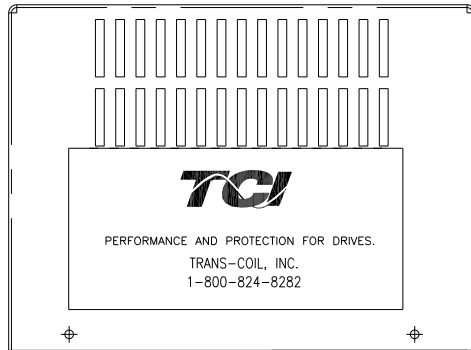
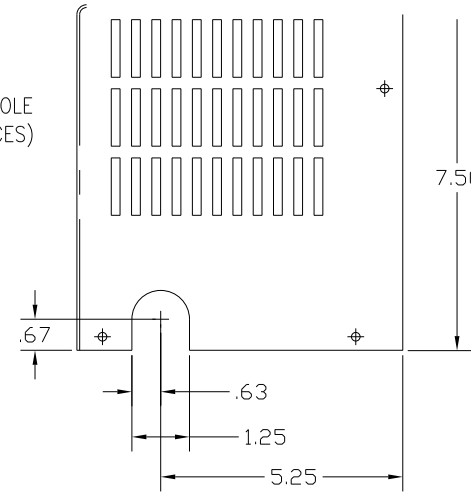
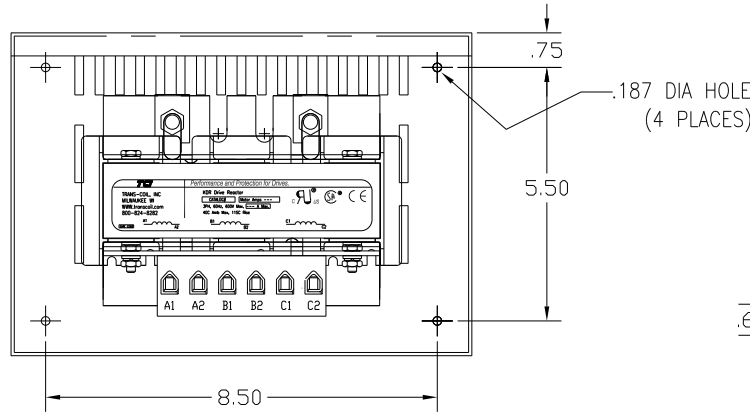
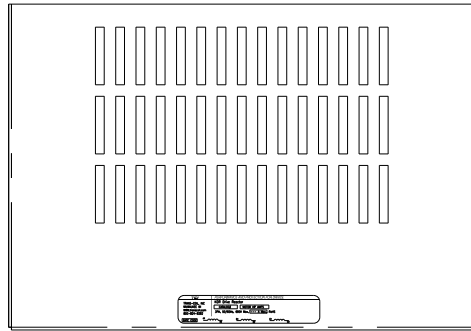


CATALOG NO	VOLTAGE	NEC MOTOR HP	NEC MOTOR CURRENT	WATTS LOSS	APPROX. WEIGHT-LBS	TERMINAL BLOCK TORQUE: (LB-IN)
KDRE42HC2	575/600	30	32	140	22	20

NOTE: NEC MOTOR CURRENT SHOWN ARE BASED ON HORSEPOWER AT 575 VOLTS.



NOTE: A1, A2, B1, B2, C1, C2, MARKINGS ON TERMINAL BLOCK FOR REFERENCE ONLY.



.203 DIA HOLE (2 PLACES) MARKED "A"

CUSTOMER IS RESPONSIBLE FOR INSTALLATION TO MEET ALL NATIONAL AND LOCAL ELECTRICAL CODES.

TOLERANCES (EXCEPT AS NOTED)				TCI 7878 N. 86th STREET MILWAUKEE, WI 53224	
			DECIMAL	KDR DRIVE REACTOR 600V HIGH Z, FRAME D	
			.XX ± .03		
			.XXX ± .01		
			FRACTIONAL ± 1/32		
			ANGULAR ± 1/2°	DRN BY DSW	DATE 1/26/12
NO	REVISION	DATE	BY	SCALE	APRVD. B
					DWG. NO. KDRE42HC2DG
					SHT. 1 OF 1