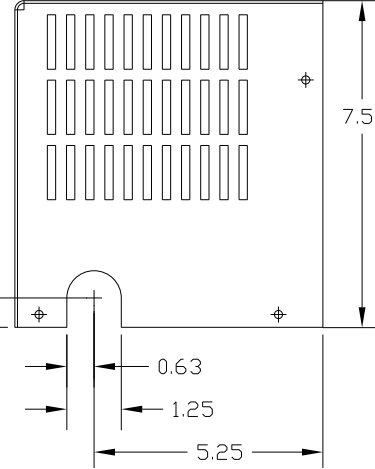
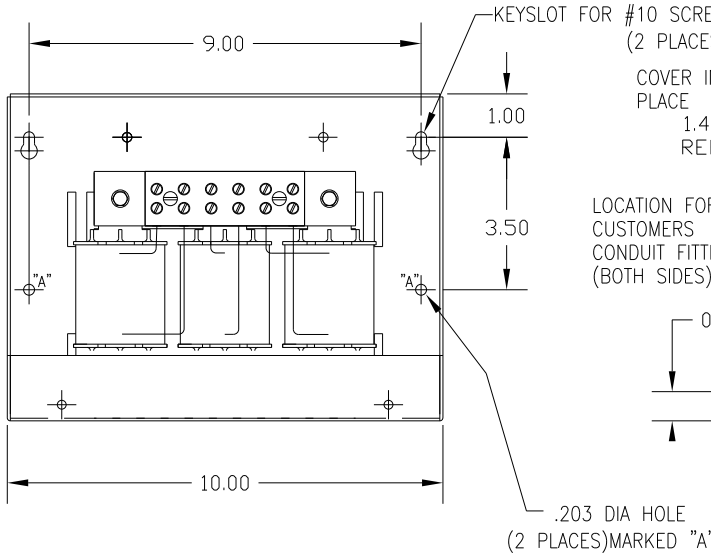
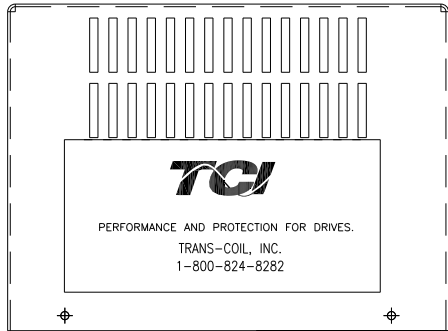
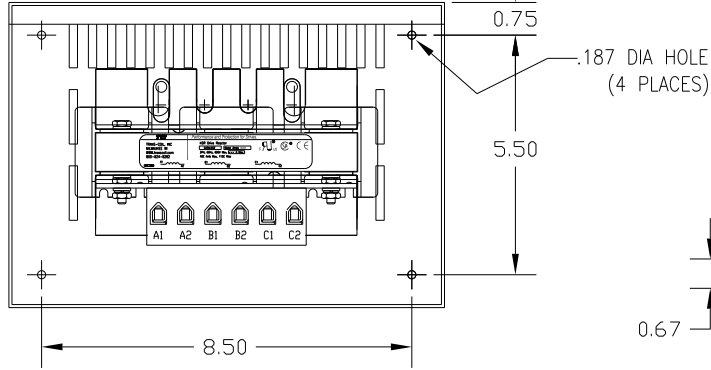
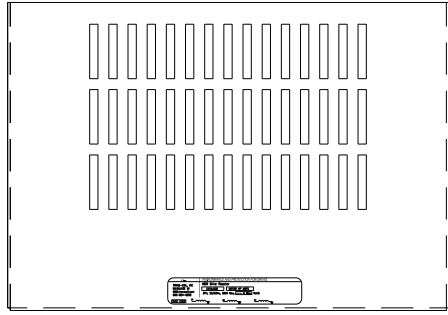
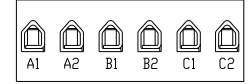


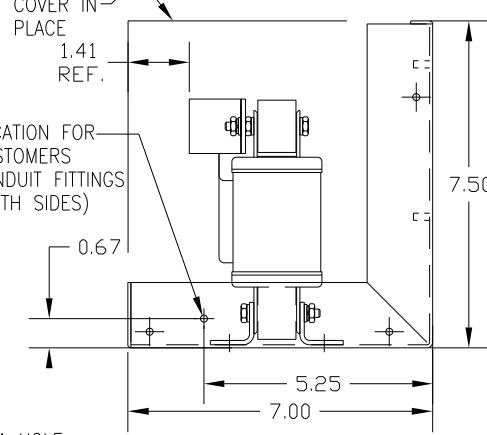
| CATALOG NO | VOLTAGE | NEC MOTOR HP | NEC MOTOR CURRENT | WATTS LOSS | APPROX WT-LBS | TORQUE (LB-IN) |
|------------|---------|--------------|-------------------|------------|---------------|----------------|
| KDRD2PC2 | 480 | 20 | 27 | NOTE:1 | 16 | 20 |



NOTE 1: WATTS LOSS WILL VARY DUE TO FUNDAMENTAL FREQUENCY, CARRIER FREQUENCY AND OTHER SYSTEM CHARACTERISTICS. KDR DRIVE REACTORS COMPLY WITH THE THERMAL AND ALTITUDE STANDARDS SET FORTH BY NEMA ST20-1992..



NOTE: A1, A2, B1, B2, C1, C2, MARKINGS ON TERMINAL BLOCK FOR REFERENCE ONLY.



CUSTOMER IS RESPONSIBLE FOR INSTALLATION TO MEET ALL NATIONAL AND LOCAL ELECTRICAL CODES.

| | | | | | | | |
|-----|----------|------|----|-------------------------------|--|---------------------------------------------|--|
| | | | | TOLERANCES (EXCEPT AS NOTED): | | 7878 N. 86th STREET MILWAUKEE, WI 53224 | |
| | | | | DECIMAL | | KDR OUTPUT REACTOR | |
| | | | | .XX ± .03 | | 480V, FRAME D | |
| | | | | .XXX ± .01 | | DRN BY DSW DATE 1/25/12 DWG. NO. KDRD2PC2DG | |
| | | | | FRACTIONAL | | SCALE | |
| | | | | ± 1/32 | | APRVD. B | |
| | | | | ANGULAR | | SHT. 1 OF 1 | |
| NO. | REVISION | DATE | BY | ± 1/2° | | | |