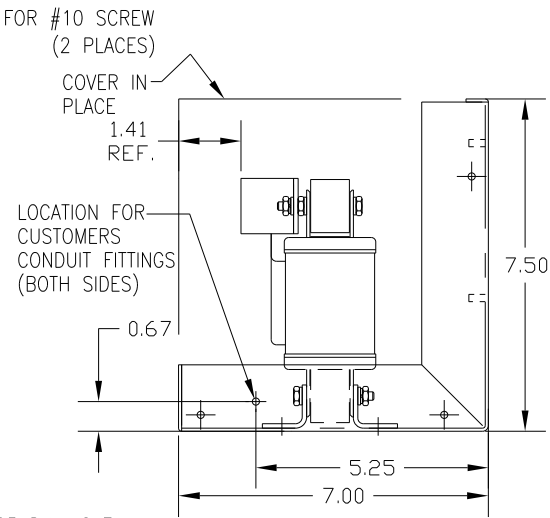
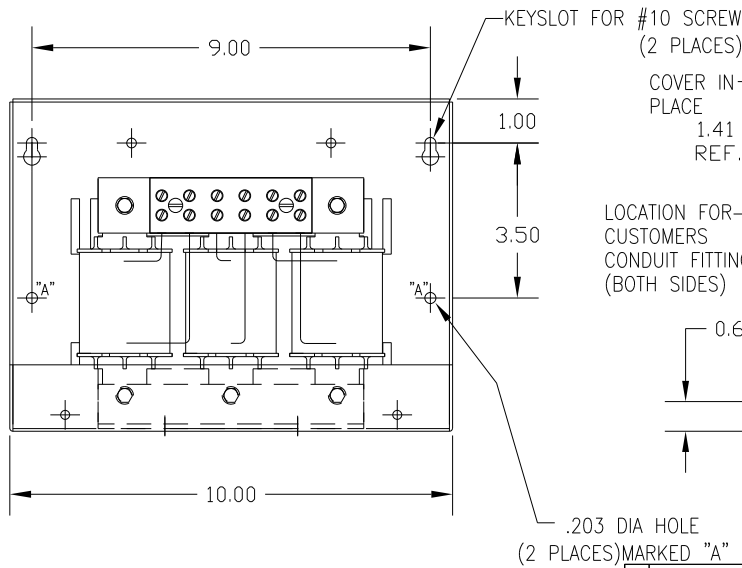
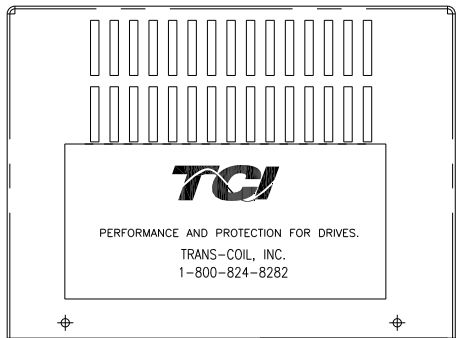
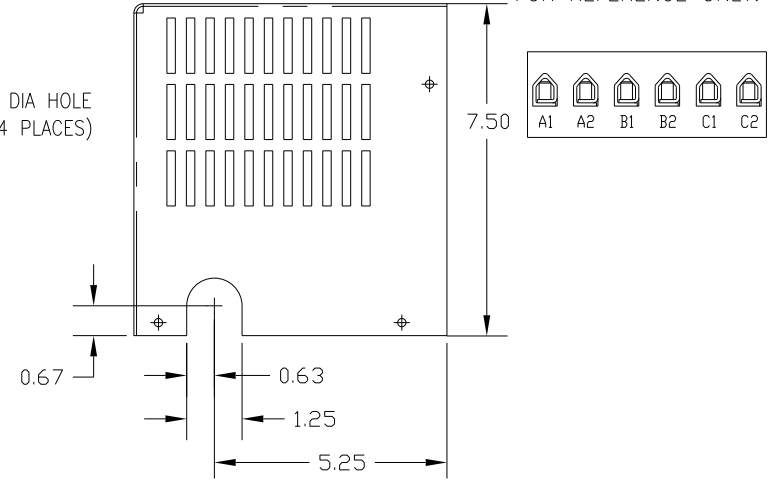
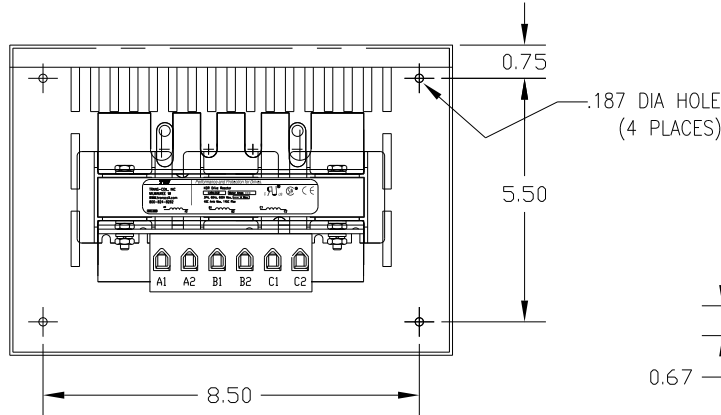
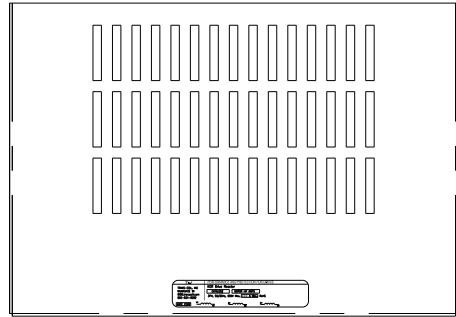


CATALOG NO	VOLTAGE	NEC MOTOR HP	NEC MOTOR CURRENT	WATTS LOSS	APPROX. WEIGHT-LBS	TERMINAL BLOCK TORQUE: (LB-IN)
KDRD26LC2	208/240	20	59.4	94	18	20

NEC MOTOR CURRENTS SHOWN IN THE 208/240 VOLT CHART ARE BASED ON HORSE POWERS AT 208 VOLT. 575/600 VOLT CHART USE THE 575 VOLT CURRENT RATING.

NOTE: A1, A2, B1, B2, C1, C2, MARKINGS ON TERMINAL BLOCK FOR REFERENCE ONLY.



CUSTOMER IS RESPONSIBLE FOR INSTALLATION TO MEET ALL NATIONAL AND LOCAL ELECTRICAL CODES.

				TOLERANCES (EXCEPT AS NOTED)		7878 N. 86th STREET MILWAUKEE, WI 53224	
				DECIMAL			
				XX ± .03		KDR DRIVE REACTOR 240V LOW Z, FRAME D	
				.XXX ± .01			
				FRACTIONAL		DRN BY DSW DATE 1/26/12 DWG NO. B KDRD26LC2DG	
				± 1/32		SCALE	
				ANGULAR		APRVD.	
				± 1/2°		SHT. 1 OF 1	
NO	REVISION	DATE	BY				