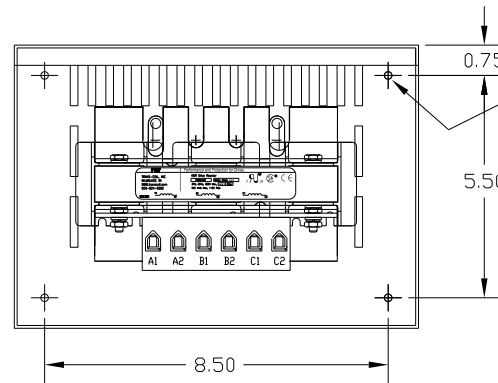
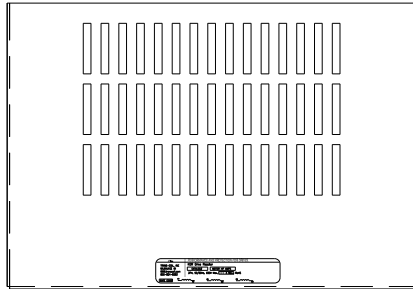


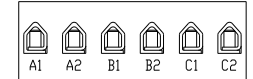
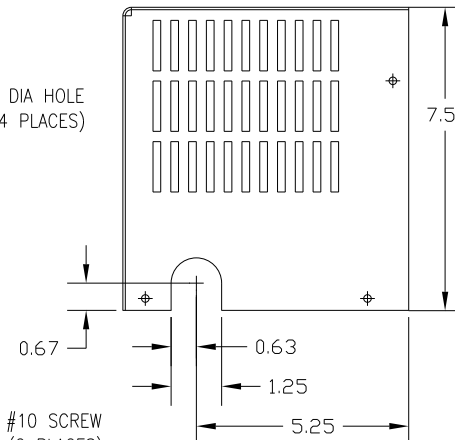
CATALOG NO	VOLTAGE	NEC MOTOR HP	NEC MOTOR CURRENT	WATTS LOSS	APPROX WT-LBS	TORQUE (LB-IN)
KDRD1PC2	480	15	21.0	NOTE:1	16	20

NOTE 1: WATTS LOSS WILL VARY DUE TO FUNDAMENTAL FREQUENCY, CARRIER FREQUENCY AND OTHER SYSTEM CHARACTERISTICS.

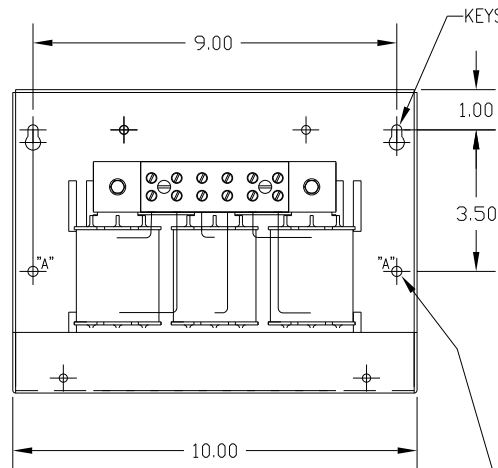
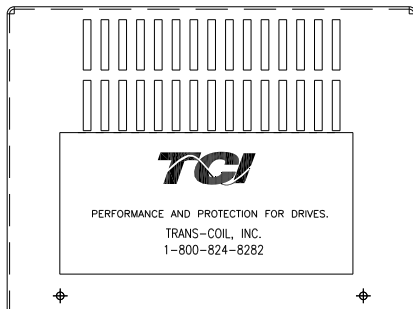
KDR DRIVE REACTORS COMPLY WITH THE THERMAL AND ALTITUDE STANDARDS SET FORTH BY NEMA ST20-1992..



.187 DIA HOLE (4 PLACES)



NOTE: A1, A2, B1, B2, C1, C2, MARKINGS ON TERMINAL BLOCK FOR REFERENCE ONLY.

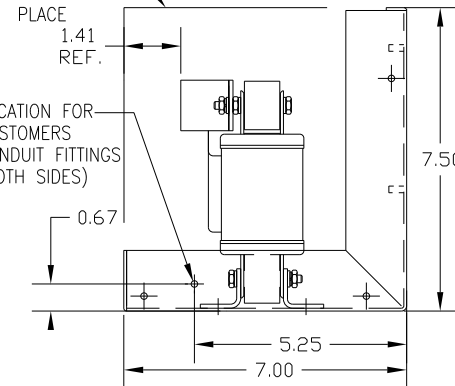


KEYSLOT FOR #10 SCREW (2 PLACES)

COVER IN PLACE 1.41 REF.

LOCATION FOR CUSTOMERS CONDUIT FITTINGS (BOTH SIDES)

.203 DIA HOLE (2 PLACES) MARKED "A"



CUSTOMER IS RESPONSIBLE FOR INSTALLATION TO MEET ALL NATIONAL AND LOCAL ELECTRICAL CODES.

NO	REVISION	DATE	BY	TOLERANCES (EXCEPT AS NOTED)	SCALE	APRVD	DATE	DWG. NO.	SHT. 1 OF 1
				.XX ± .03 .XXX ± .01 FRACTIONAL ± 1/32 ANGULAR ± 1/2°			1/25/12	B KDRD1PC2DG	

7878 N. 86th STREET MILWAUKEE, WI 53224

KDR OUTPUT REACTOR 480V, FRAME D