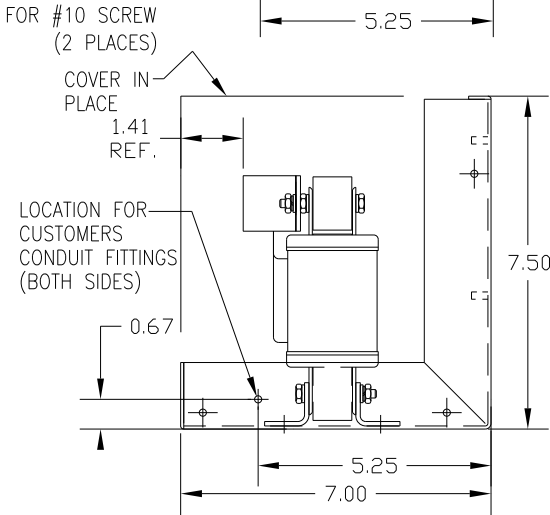
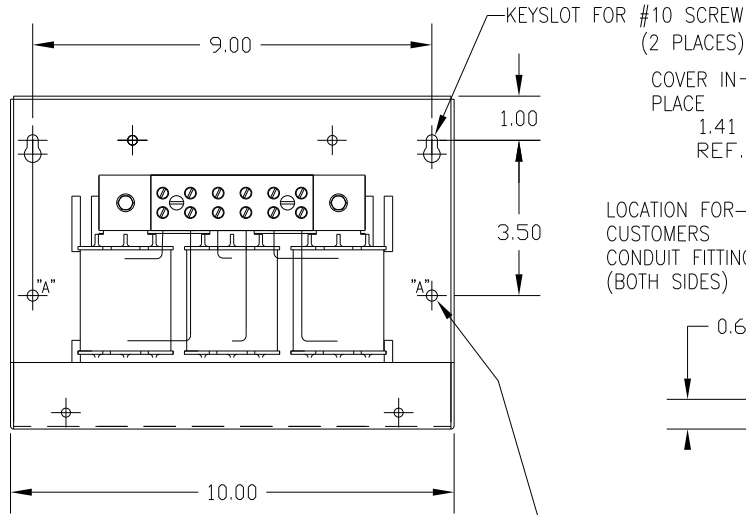
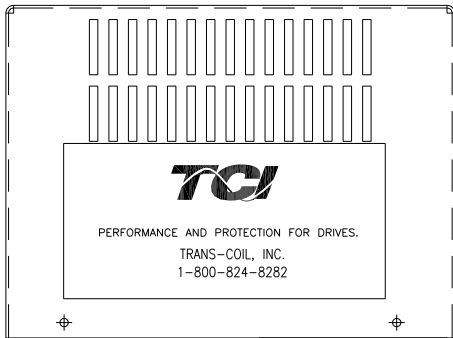
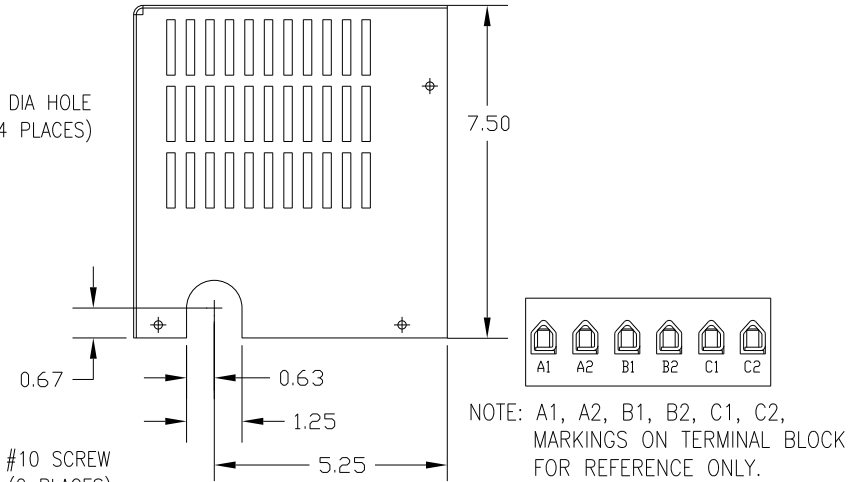
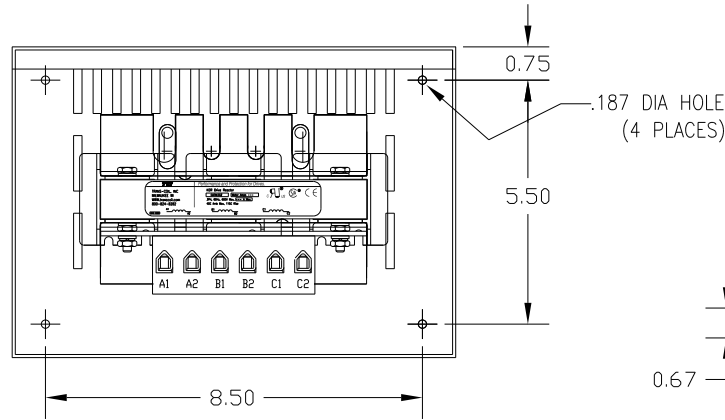
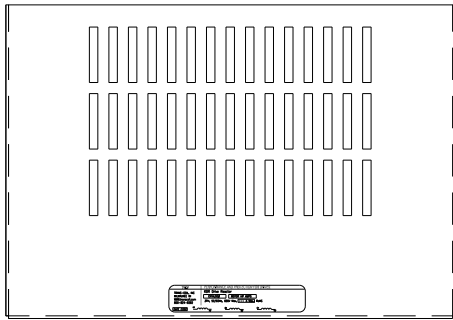


| CATALOG NO | VOLTAGE | NEC MOTOR HP | NEC MOTOR CURRENT | WATTS LOSS | APPROX WT-LBS | TORQUE (LB-IN) |
|------------|---------|--------------|-------------------|------------|---------------|----------------|
| KDRD1LC2 | 480 | 25 | 34 | 96 | 16 | 20 |



CUSTOMER IS RESPONSIBLE FOR INSTALLATION TO MEET ALL NATIONAL AND LOCAL ELECTRICAL CODES.

| NO | REVISION | DATE | BY | TOLERANCES (EXCEPT AS NOTED) | SCALE | APRVD | DATE | DWG NO | SHT. 1 OF 1 |
|----|----------|------|----|------------------------------|-------|-------|------|--|-------------|
| | | | | .XX ±.03 | | | | KDR DRIVE REACTOR 480V LOW Z, FRAME D | |
| | | | | .XXX ±.01 | | | | | |
| | | | | FRACTIONAL ± 1/32 | | | | | |
| | | | | ANGULAR ± 1/2° | | | | | |

TCI 7878 N. 86th STREET MILWAUKEE, WI 53224

KDR DRIVE REACTOR
480V LOW Z, FRAME D

DRN BY DSW DATE 1/25/12 DWG NO B KDRD1LC2DG
SCALE APRVD B SHT. 1 OF 1