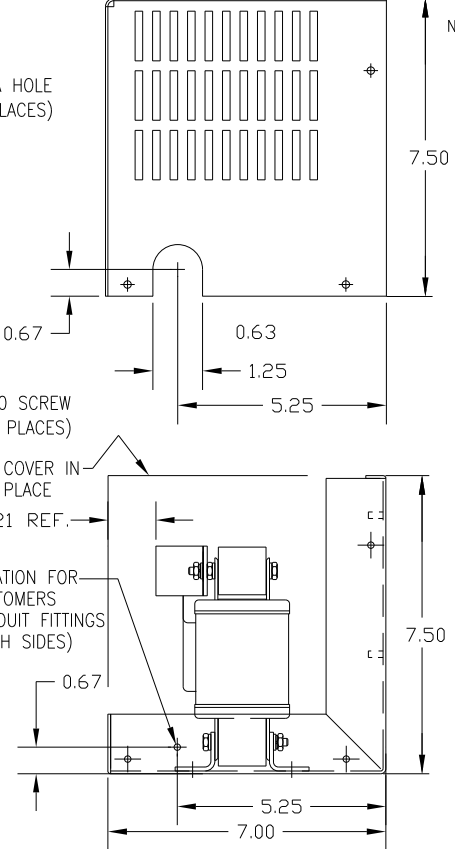
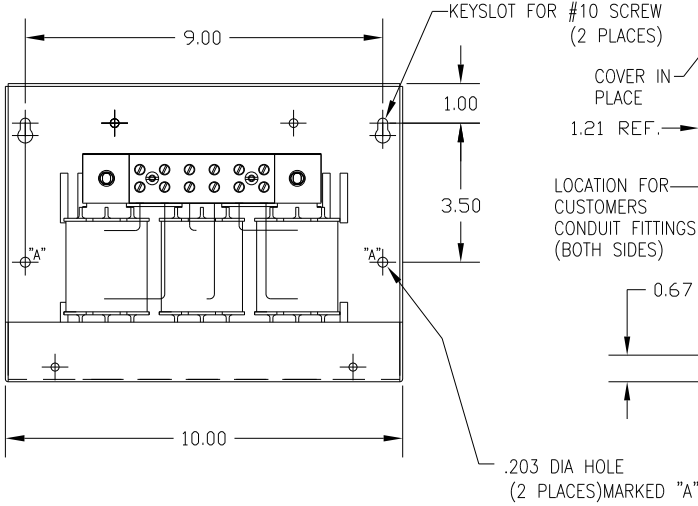
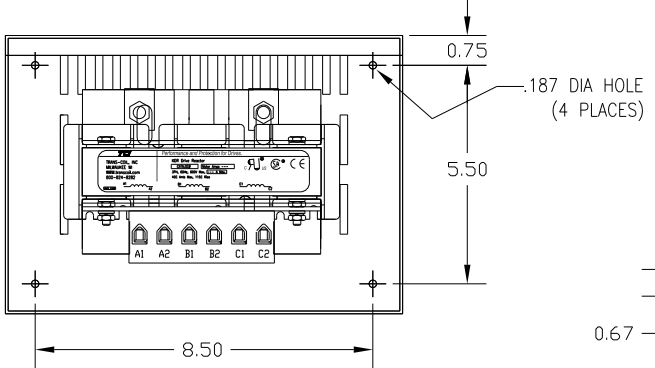
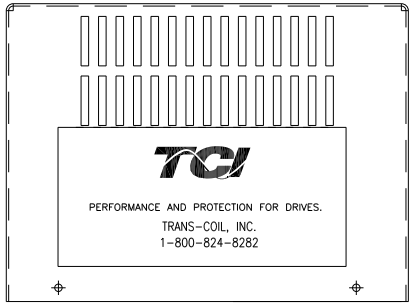
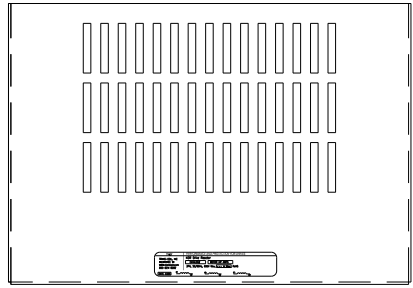
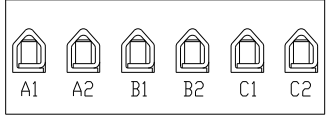


CATALOG NO	VOLTAGE	NEC MOTOR HP	NEC MOTOR CURRENT	WATTS LOSS	APPROX WT-LBS	TORQUE (LB-IN)
KDRC31PC2	575	50	52	NOTE: 1	21	20



NOTE 1: WATTS LOSS WILL VARY DUE TO FUNDAMENTAL FREQUENCY, CARRIER FREQUENCY AND OTHER SYSTEM CHARACTERISTICS. KDR DRIVE REACTORS COMPLY WITH THE THERMAL AND ALTITUDE STANDARDS SET FORTH BY NEMA ST20-1992..



NOTE: A1, A2, B1, B2, C1, C2, MARKINGS ON TERMINAL BLOCK FOR REFERENCE ONLY.

CUSTOMER IS RESPONSIBLE FOR INSTALLATION TO MEET ALL NATIONAL AND LOCAL ELECTRICAL CODES.

		TOLERANCES (EXCEPT AS NOTED)		7878 N. 86th STREET MILWAUKEE, WI 53224
		DECIMAL		
		.XX ± .03 .XXX ± .01		
		FRACTIONAL ± 1/32		
		ANGULAR		KDR OUTPUT REACTOR 575V, FRAME C Dwg. No. B KDRC31PC2DG SHT. 1 of 1
		± 1/2°		
NO	REVISION	DATE	BY	DESIGNED BY: DSW DATE: 1/25/12 APPROVED: [Signature] SCALE: