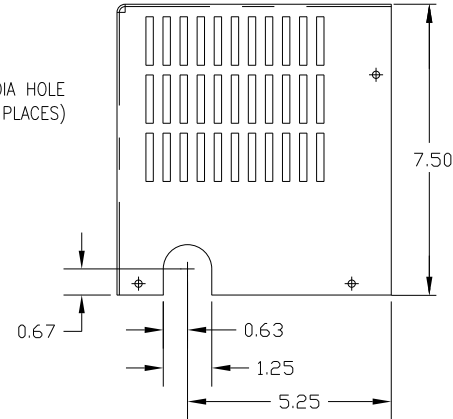
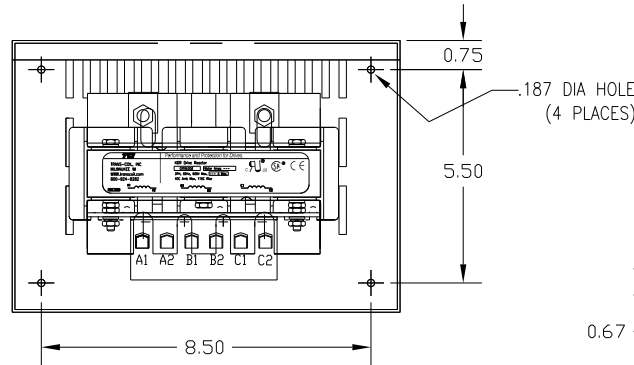
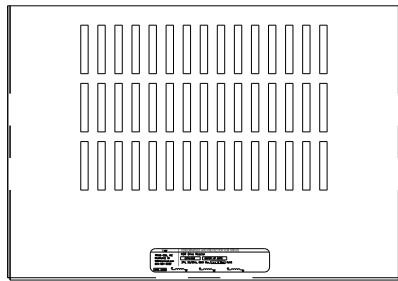
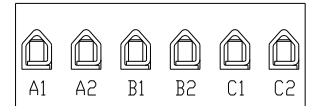


CATALOG NO	VOLTAGE	NEC MOTOR HP	NEC MOTOR CURRENT	WATTS LOSS	APPROX WT-LBS
KDRC22LC2	208/240	25	74.8	114	21

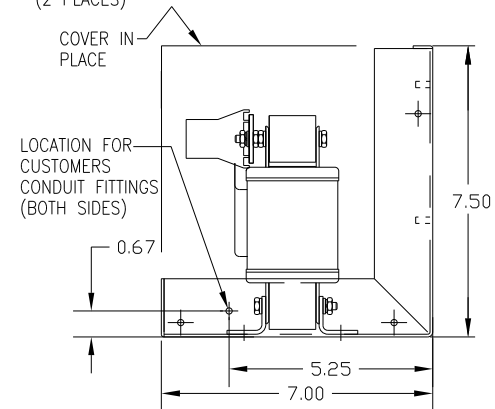
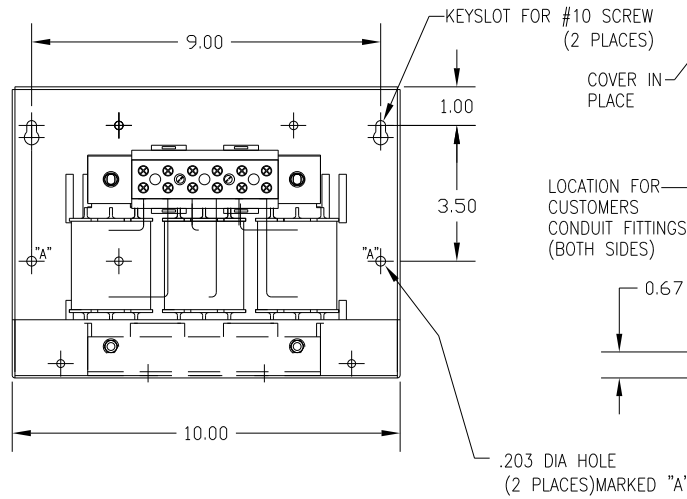
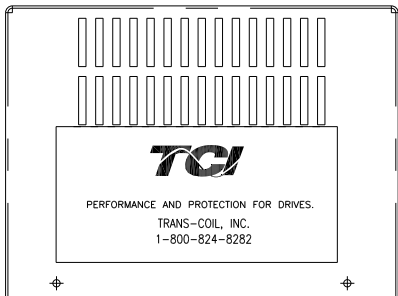
NEC MOTOR CURRENTS SHOWN IN THE 208/240 VOLT CHART ARE BASED ON HORSE POWERS AT 208 VOLT. 575/600 VOLT CHART USE THE 575 VOLT CURRENT RATING.



TORQUE(LB-IN)=CUSTOMER WIRE  
 35=1 AWG THRU 4 AWG  
 30=6 AWG THRU 14 AWG  
 25=16 AWG THRU 20 AWG  
 20=22 AWG



NOTE: A1, A2, B1, B2, C1, C2, MARKINGS ON TERMINAL BLOCK FOR REFERENCE ONLY.



CUSTOMER IS RESPONSIBLE FOR INSTALLATION TO MEET ALL NATIONAL AND LOCAL ELECTRICAL CODES.

				TOLERANCES (EXCEPT AS NOTED)		TCI 7878 N. 86th STREET MILWAUKEE, WI 53224	
				DECIMAL	.XX ± .03	KDR DRIVE REACTOR, ENCLOSED 240V LOW Z, FRAME C	
					.XXX ± .01		
				FRACTIONAL	± 1/32		
				ANGULAR	± 1/2°	DRN. BY DSW	DATE 2/14/12
NO	REVISION	DATE	BY	SCALE	APPRV. B	DWG. NO. KDRC22LC2DG	SHT. 1 OF 1