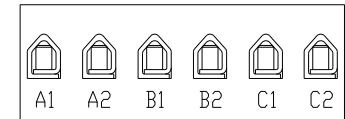
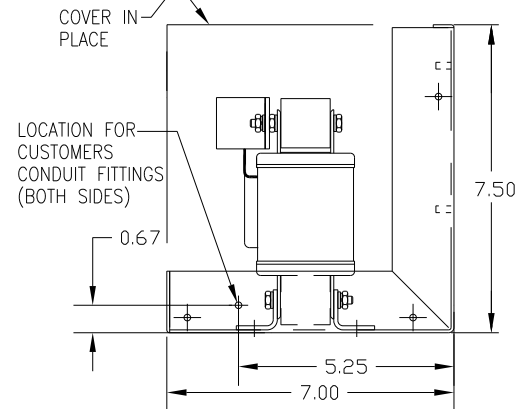
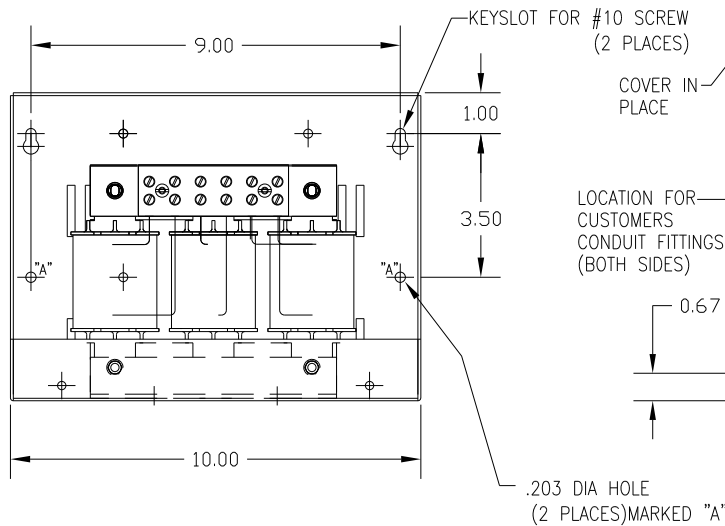
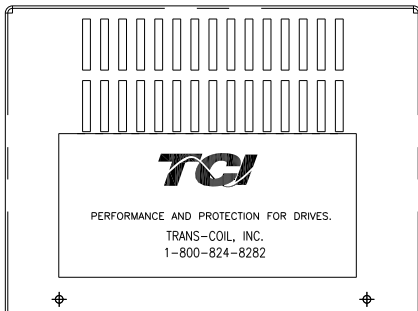
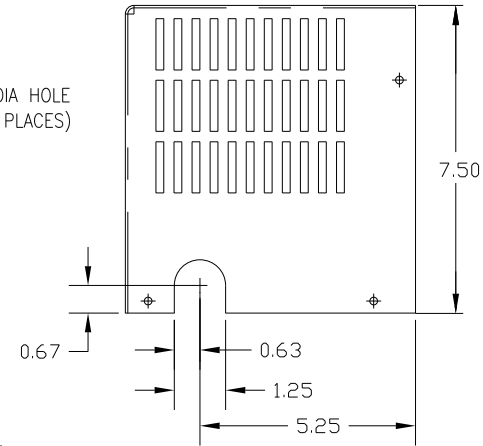
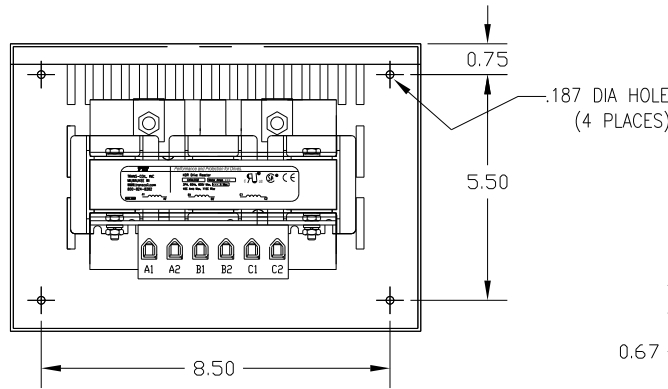
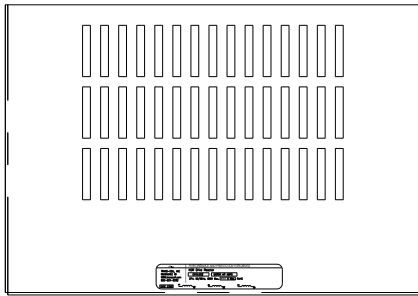


| CATALOG NO | VOLTAGE | NEC MOTOR HP | NEC MOTOR CURRENT | WATTS LOSS | APPROX WT-LBS |
|------------|---------|--------------|-------------------|------------|---------------|
| KDRC22HC2 | 208/240 | 20 | 59.4 | 113 | 21 |

NEC MOTOR CURRENTS SHOWN IN THE 208/240 VOLT CHART ARE BASED ON HORSE POWERS AT 208 VOLT. 575/600 VOLT CHART USE THE 575 VOLT CURRENT RATING.



NOTE: A1, A2, B1, B2, C1, C2, MARKINGS ON TERMINAL BLOCK FOR REFERENCE ONLY.

Block Wire Range: #18 to #4 AWG Solid or Stranded, Copper
Tightening Torque: 20 LB-IN

CUSTOMER IS RESPONSIBLE FOR INSTALLATION TO MEET ALL NATIONAL AND LOCAL ELECTRICAL CODES.

| NO | REVISION | DATE | BY | TOLERANCES (EXCEPT AS NOTED) |
|----|----------|------|----|------------------------------|
| | | | | DECIMAL |
| | | | | .XX ± .03 |
| | | | | .XXX ± .01 |
| | | | | FRACTIONAL |
| | | | | ± 1/32 |
| | | | | ANGULAR |
| | | | | ± 1/2° |

TCI 7878 N. 86th STREET
MILWAUKEE, WI 53224

KDR DRIVE REACTOR, ENCLOSED
240V HIGH Z, FRAME C

| | | | | | |
|---------|-----|--------|---------|-------------|-------------|
| DRN. BY | DSW | DATE | 2/14/12 | DWG. NO. | B |
| SCALE | | APRVD. | | KDRC22HC2DG | SHT. 1 OF 1 |