

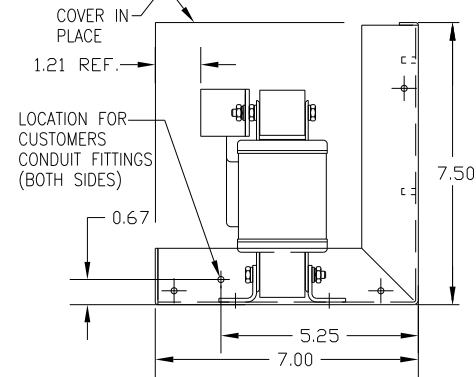
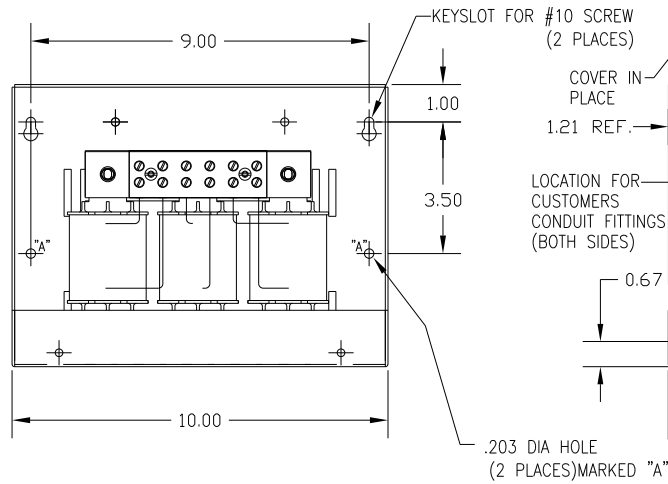
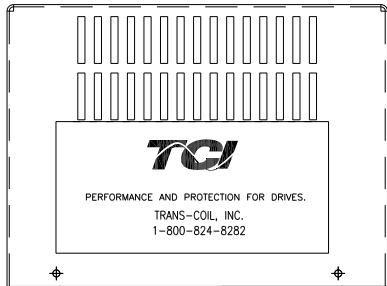
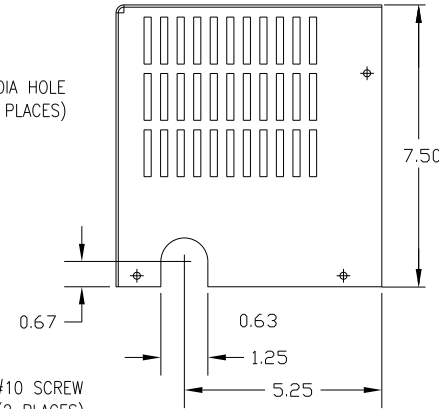
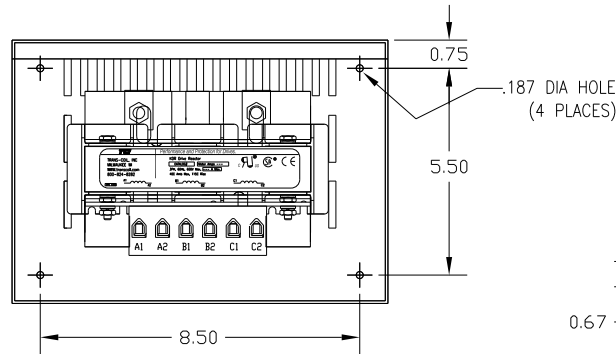
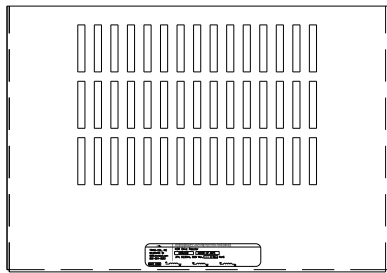
CATALOG NO	VOLTAGE	NEC MOTOR HP	NEC MOTOR CURRENT	WATTS LOSS	APPROX WT-LBS	TORQUE (LB-IN)
KDRC1PC2	480	40	52	NOTE: 1	21	20

NOTE 1: WATTS LOSS WILL VARY DUE TO FUNDAMENTAL FREQUENCY, CARRIER FREQUENCY AND OTHER SYSTEM CHARACTERISTICS.

KDR DRIVE REACTORS COMPLY WITH THE THERMAL AND ALTITUDE STANDARDS SET FORTH BY NEMA ST20-1992..



NOTE: A1, A2, B1, B2, C1, C2, MARKINGS ON TERMINAL BLOCK FOR REFERENCE ONLY.



CUSTOMER IS RESPONSIBLE FOR INSTALLATION TO MEET ALL NATIONAL AND LOCAL ELECTRICAL CODES.

				TOLERANCES (EXCEPT AS NOTED)		7878 N. 86th STREET MILWAUKEE, WI 53224	
				DECIMAL			
				.XX ± .03		KDR OUTPUT REACTOR 480V, FRAME C	
				.XXX ± .01			
				FRACTIONAL		<small>DRN BY</small> DSW <small>DATE</small> 1/25/12 <small>DWG NO</small> B <small>KDRC1PC2DG</small>	
				± 1/32		<small>SCALE</small> <small>APRVD</small>	
				ANGULAR		<small>SHT. 1</small> <small>of 1</small>	
				± 1/2°			
<small>NO</small>	<small>REVISION</small>	<small>DATE</small>	<small>BY</small>				